

Register's Office  
Lake County  
Part of  
Lakeland Acres No 2  
Examined and Approved  
Feb 27 1927  
Deputy Auctioneer  
Emil Johnson  
Notary Public

# LAKELAND ACRES NO 2

EAST 1/2 OF SW 1/4 AND WEST 1/2 OF SE 1/4  
SECTION 35 T.18N. R.13W.  
LAKE COUNTY MICHIGAN

**DEDICATION**  
Know all men by these presents: That I Kane L. Jolliffe trustee have caused the land embraced in the annexed plat to be surveyed laid out and platted to be known as LAKELAND ACRES NO 2 East 1/2 of SW 1/4 and West 1/2 of SE 1/4 Section 35 T.18N. R.13 W Lake County Michigan and that the streets and parts as thereon shown are hereby dedicated to the use of the public.  
Kane L. Jolliffe Trustee.  
Signed and Sealed in presence of  
Emil Johnson  
Notary Public  
State of Michigan } ss  
County of Boone }  
On this 25 day of January 1927 before me  
Joseph E. Nelson a Notary Public in and for  
said county personally came the above named  
Kane L. Jolliffe known to me to be the person  
who executed the above dedication and acknowledged the same  
to be his free act and deed as such trustee  
Joseph E. Nelson Notary Public  
My Commission expires Jan. 19-1931

**DESCRIPTION OF LAND**  
The land embraced in the annexed plat of  
Lakeland Acres No 2 E 1/2 of SW 1/4 and W 1/2  
of SE 1/4 Section 35 T.18N. R.13 W. Lake  
County Mich is described as follows:  
Beginning at the 1/4 post south side of Sec  
35 on township line hence N 89° W 1275 ft  
hence N 015° W 2634 ft hence S 87° 30' E  
1324 ft hence East 1319 ft hence S 1° W  
1279 ft hence S 0° 30' W 1320 ft hence  
N 87° 45' W 1320 ft to place of beginning.

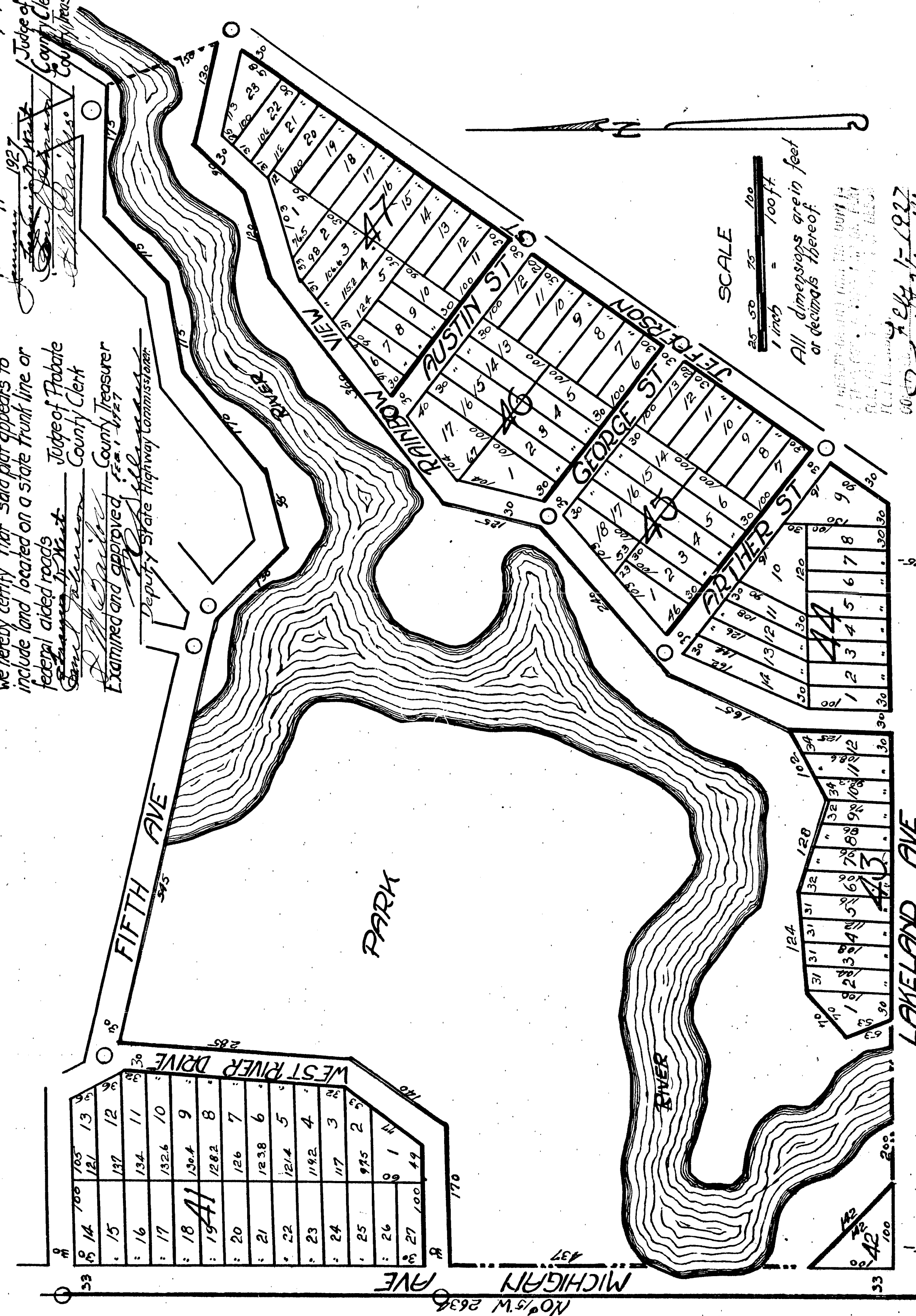
**COUNTY TREASURERS CERTIFICATE**  
Office of County Treasurer Lake County, Mich.  
I hereby certify that there are no tax liens or  
titles held by the State on the land described in the  
annexed plat and that there are no tax liens or titles  
held by individuals on said lands for the five years  
preceding the 25 day of January 1927  
and that the taxes for the said period of five  
years are paid as shown by the records of  
this office.  
J. M. Crank County Treasurer  
Dated this 31 day of January 1927

**CERTIFICATE AS TO STATE TRUNK LINE ROADS**  
We hereby certify that said plat appears to  
include land located on a state trunk line or  
federal aided roads  
Emil Johnson Judge of Probate  
County Clerk  
Emil Johnson County Treasurer  
Examined and approved, Jan. 1927  
W. J. Hill Deputy State Highway Commissioner

Including 4 sheets  
Sheet No 1  
Part of the SE 1/4 of SW 1/4  
**SURVEYORS CERTIFICATE**  
I hereby certify that the plat herein  
delimited is correct one and that  
permanent monuments of not less than  
one inch in diameter and fifteen inches in  
length set in a concrete base at least four  
inches square and four feet high in  
length have been placed at points marked thus  
"O" as thereon shown at all angles in the  
boundaries of the land platted at all inter-  
sections of streets and at all the  
intersections of streets with the  
boundaries of the plat as shown on said  
plat  
Emil Johnson  
Registered Surveyor

**CERTIFICATE OF MUNICIPAL APPROVAL**  
This plat was approved by the Township  
Board of the Twp of Wadsworth at a  
meeting held on the 31 day of Jan 1927  
George V. West Twp. Clerk

**CERTIFICATE OF APPROVAL OF COUNTY BOARD**  
This plat was approved on the 31 day of  
Jan 1927  
Emil Johnson Judge of Probate  
County Clerk  
Emil Johnson County Treasurer



SCALE  
1 inch = 100 ft.  
All dimensions are in feet  
or decimals thereof.  
Examined and Approved  
Feb 27 1927  
Emil Johnson  
Deputy Auctioneer

STATE TRUNK LINE 1275  
N 89° W 1275

STATE TRUNK LINE 1275

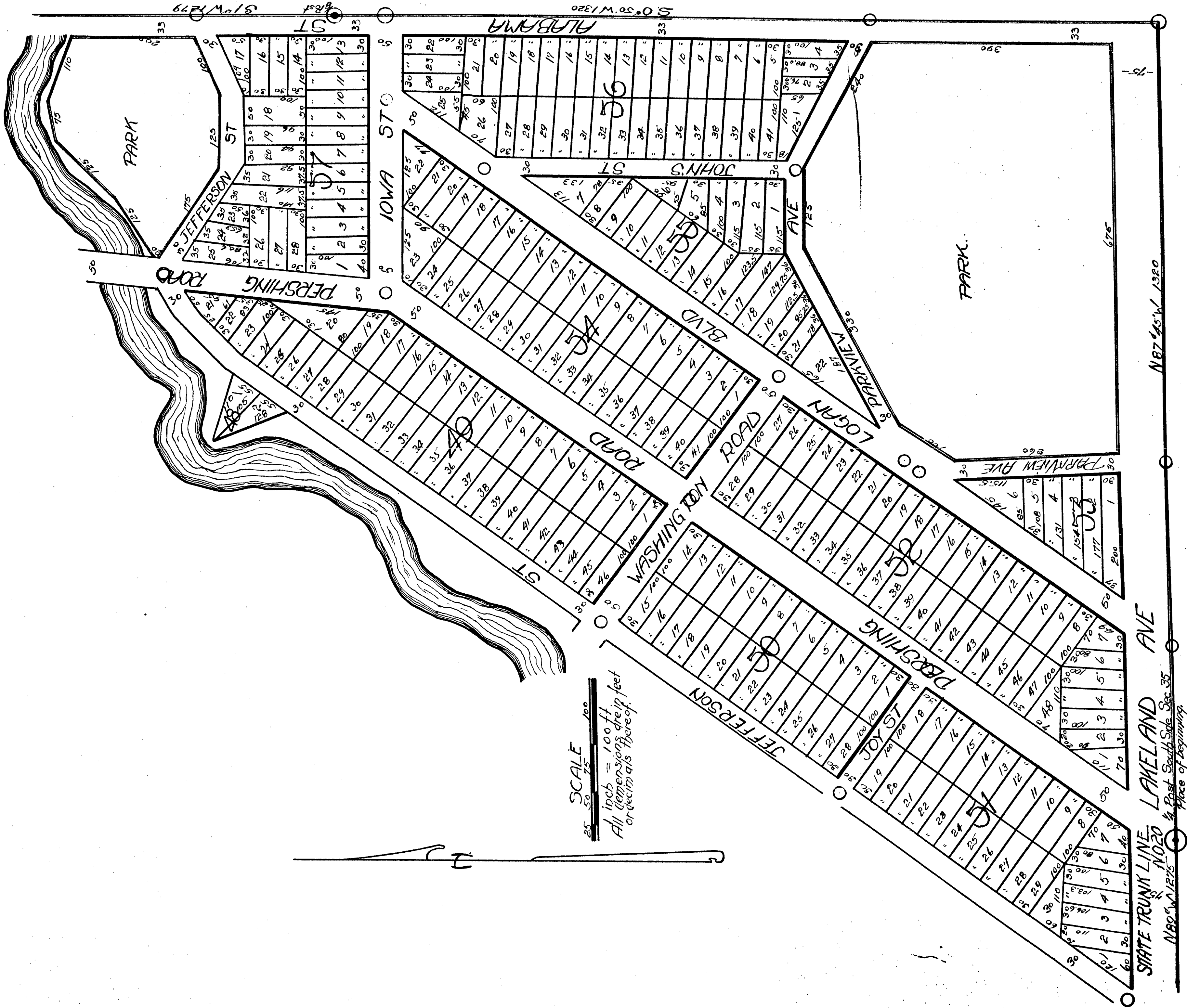
FILED IN REGISTER'S OFFICE  
Feb 23 1927  
Emil Johnson  
Deputy Auctioneer



# LAKELAND ACRES NO 2

including 4 sheets

sheet No 2



SCALE  
 25 50 75 100  
 1 inch = 100 ft  
 All dimensions are in feet  
 or decimals thereof.

STATE TRUNK LINE LAKELAND AVE  
 N 87° 45' W 1320  
 1/4 Post South Side Sec. 35  
 N 89° W 1/2 E 75' Place of beginning

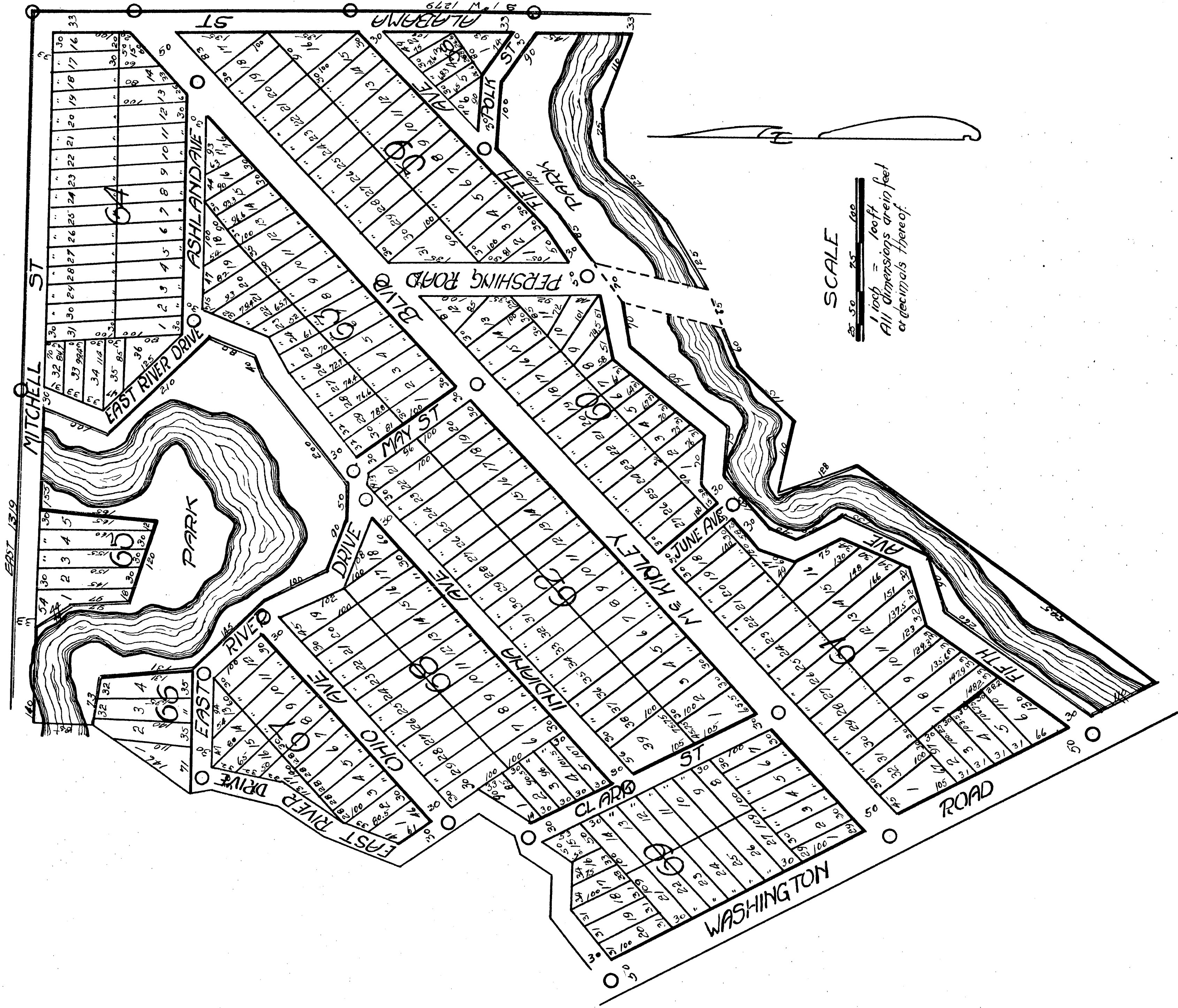
2/1/27  
 3/4 OK



# LAKELAND ACRES NO 2

including 4 sheets

sheet No 3.

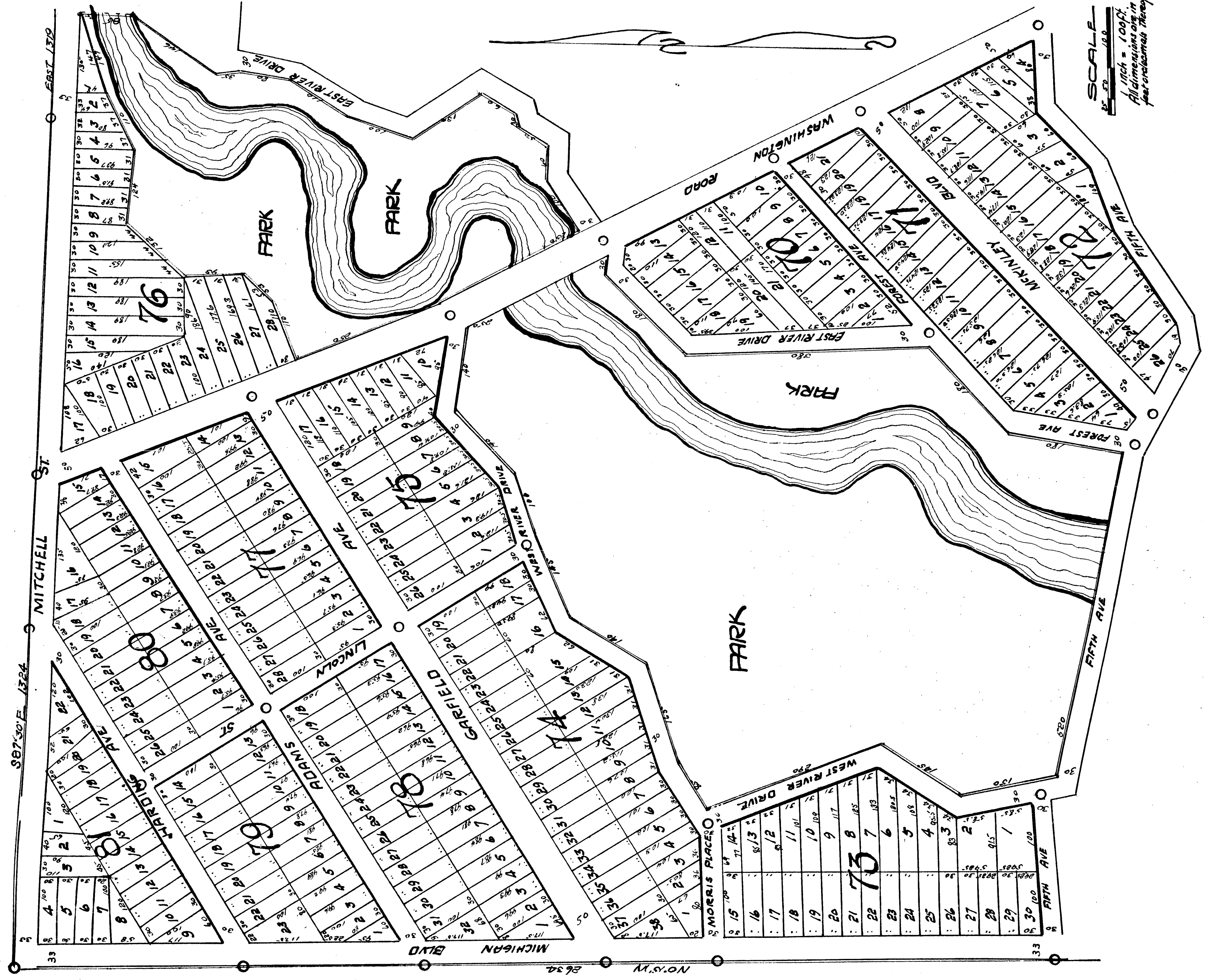


5/1/21



23233

LAKELAND ACRES No 2 - Sheet No 4  
including 4 sheets



SCALE  
1 inch = 100 feet  
All dimensions are in feet unless otherwise stated

17/11/18



# LAKELAND ACRES NO 2

EAST 1/2 OF SW 1/4 AND WEST 1/2 OF SE 1/4  
SECTION 35 T.18N. R.13W.  
LAKE COUNTY MICHIGAN

Recorder's Office  
County  
Lakeland Acres No 2  
This is 21  
of this 27, 10, 15, 19, 20  
of 28, 8, 10, 11, 12, 13, 14, 15, 16, 17, 18, 19, 20, 21, 22, 23, 24, 25, 26, 27, 28, 29, 30, 31, 32, 33, 34, 35  
of this 27, 10, 15, 19, 20  
of 28, 8, 10, 11, 12, 13, 14, 15, 16, 17, 18, 19, 20, 21, 22, 23, 24, 25, 26, 27, 28, 29, 30, 31, 32, 33, 34, 35  
of this 27, 10, 15, 19, 20  
of 28, 8, 10, 11, 12, 13, 14, 15, 16, 17, 18, 19, 20, 21, 22, 23, 24, 25, 26, 27, 28, 29, 30, 31, 32, 33, 34, 35

**DEDICATION**  
I, Ernest Johnson, Trustee  
know all men by these presents, that I have personally caused the land embraced in the annexed plat to be surveyed, laid out and platted to be known as **LAKELAND ACRES NO 2**, East 1/2 of SW 1/4 and West 1/2 of SE 1/4, Section 35 T.18N. R.13W. Lake County, Michigan, and that the streets and parts are thereon shown are hereby dedicated to the use of the public.

Ernest Johnson Trustee.  
Signed and sealed in presence of  
Ernest Johnson  
Joseph E. Nelson  
State of Michigan  
County of Boon  
On this 25 day of January, 1927, before me  
Joseph E. Nelson, a notary public in and for  
said county, personally came the above named  
Ernest Johnson, known to me to be the person  
who executed the above dedication and acknowledged the same  
to be his free act and deed as such trustee  
Joseph E. Nelson, Notary Public  
My Commission expires Jan. 19-1931

**DESCRIPTION OF LAND**  
The land embraced in the annexed plat of Lakeland Acres No 2 E 1/2 of SW 1/4 and W 1/2 of SE 1/4 Section 35 T.18N. R.13 W. Lake County, Mich is described as follows:  
Beginning at the 1/4 post south side of Sec 35 on township line hence N 89° W 127.75 ft hence N 0° 15' W 263.4 ft hence S 87° 30' E 132.4 ft hence East 131.9 ft hence S 1/4 W 127.9 ft hence S 0° 50' W 132.0 ft hence N 87° 45' W 132.0 ft to place of beginning.

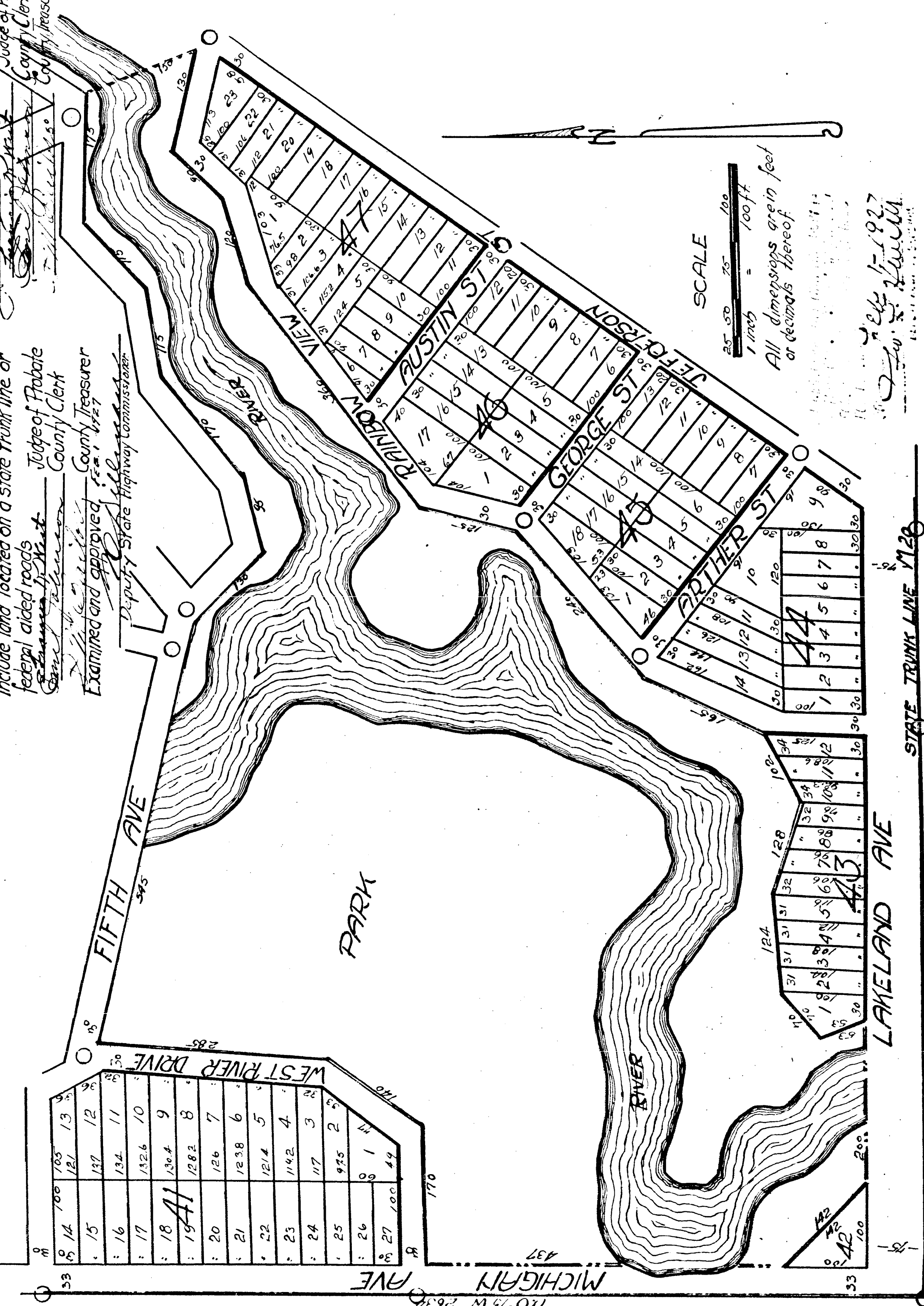
**COUNTY TREASURERS CERTIFICATE**  
Office of County Treasurer Lake County, Mich.  
I hereby certify that there are no tax liens or titles held by the State on the land described in the annexed plat and that there are no tax liens or titles held by individuals on said lands for the five years preceding the 31 day of January, 1927, and that the taxes for the said period of five years are paid as shown by the records of this office.

**CERTIFICATE OF APPROVAL OF COUNTY BOARD**  
This plat was approved by the Township Board of the Twp of Waubesa at a meeting held on the 21 day of Jan 1927.

Including 4 sheets  
Sheet No 1  
Part of the SE 1/4 of SW 1/4  
**SURVEYORS CERTIFICATE**  
I hereby certify that the plat hereon delineated is a correct one and that permanent monuments of not less than one inch in diameter and fifteen inches in length set in a concrete base at least four inches square and forty-eight inches in length have been placed at points marked thus "O" as thereon shown at all angles in the boundaries of the land platted at all intersections of streets and at all the inter-sections of streets with the boundaries of the plat as shown on said plat  
Ernest Johnson  
Registered Surveyor

**CERTIFICATE OF MUNICIPAL APPROVAL**  
This plat was approved by the Township Board of the Twp of Waubesa at a meeting held on the 21 day of Jan 1927.

**CERTIFICATE OF APPROVAL OF COUNTY BOARD**  
This plat was approved on the 21 day of Jan 1927.  
Ernest Johnson  
Judge of Probate  
County Clerk  
County Treasurer



SCALE  
1 inch = 100 feet  
All dimensions are in feet or decimals thereof  
Ernest Johnson  
25-1-1927  
Feb 25-1927  
Ernest Johnson

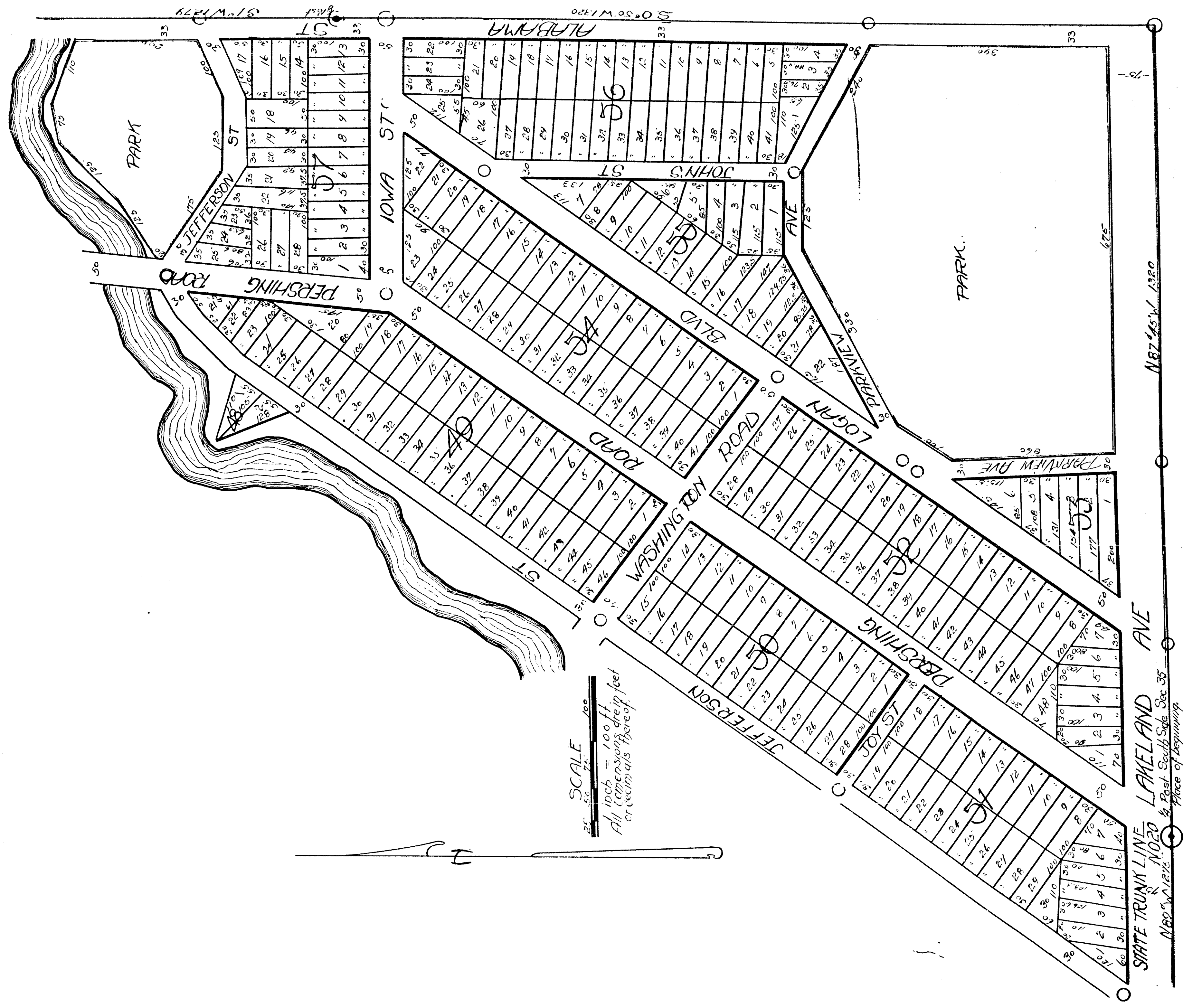


23233

# LAKELAND ACRES NO 2

including 4 sheets

sheet No 2



SCALE  
 25' 50' 75' 100'  
 1 inch = 100 feet  
 All dimensions are in feet  
 or decimals thereof.

STATE TRUNK LINE NO. 20  
 N80°W 1275' Place of Beginning  
 LAKELAND ACRES  
 N87°45'W 1320

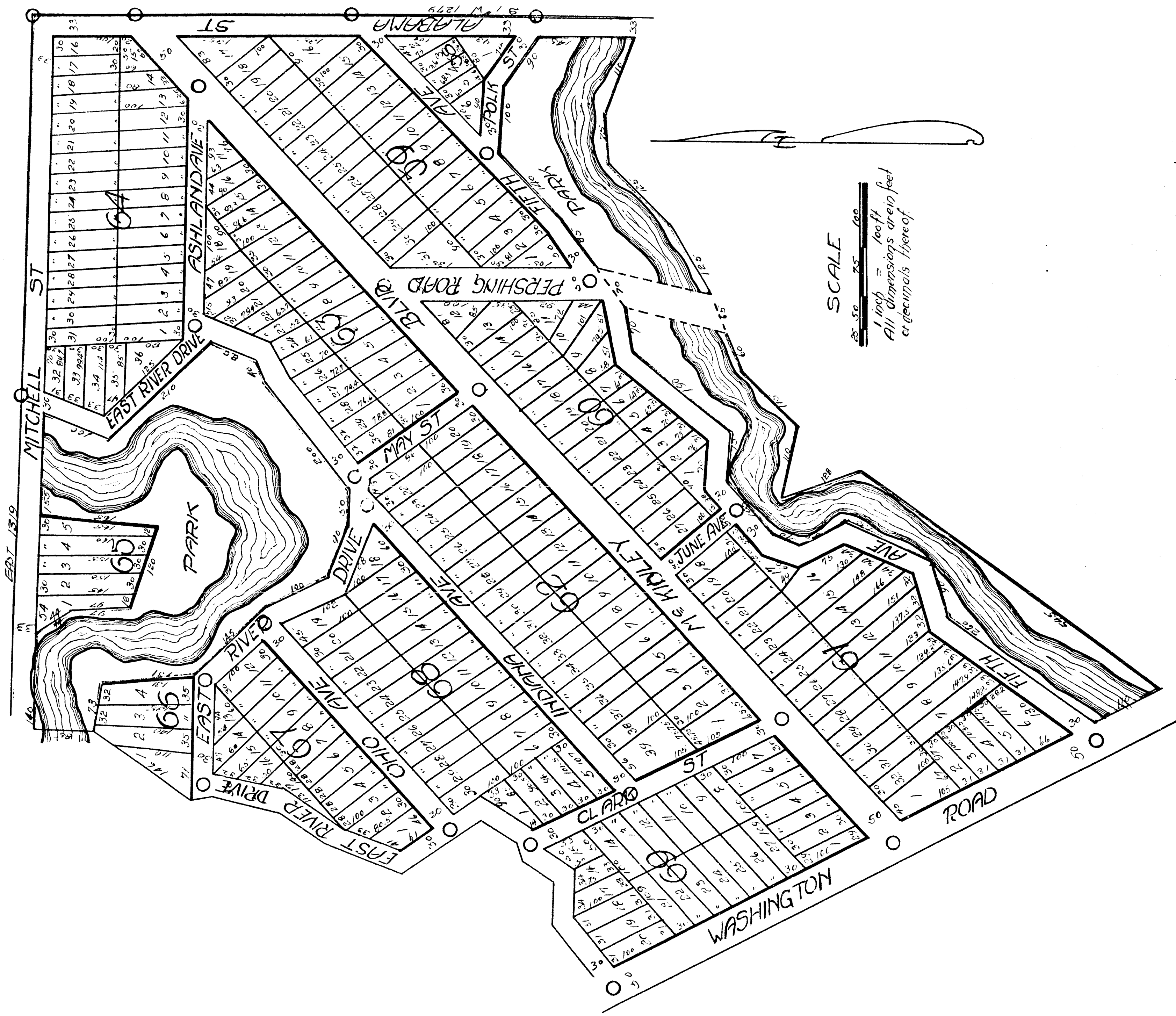
2/1/27  
5/6



# LAKELAND ACRES NO 2

including 4 sheets

sheet No 3.



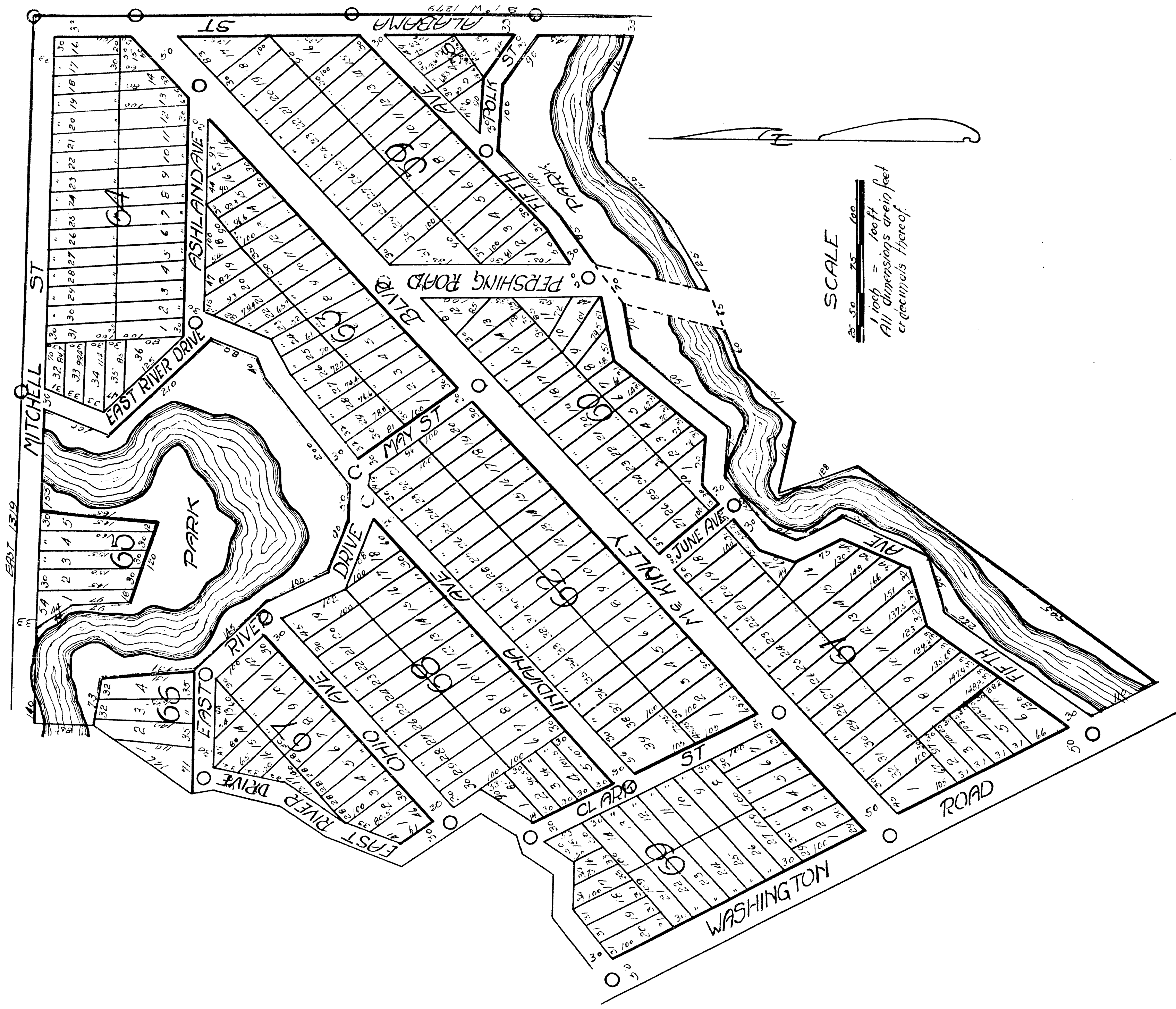
5/11/12



# LAKELAND ACRES NO 2

including 4 sheets

sheet No 3.

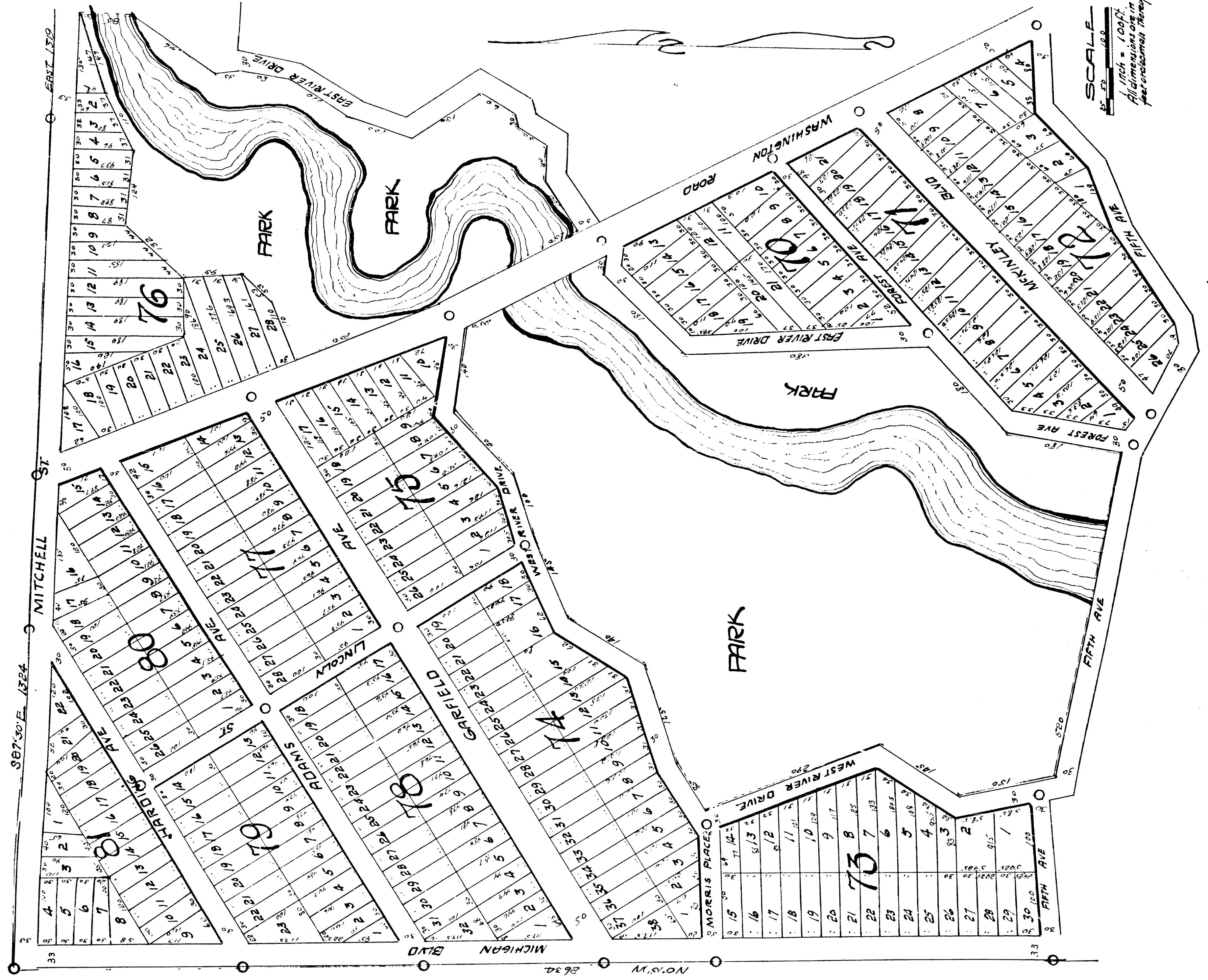


SCALE  
 1 inch = 100 feet  
 All dimensions are in feet or decimals thereof

12/1/21



LAKELAND ACRES No 2 - Sheet No 4  
including 4 sheets



SCALE  
1 inch = 100 ft.  
All dimensions are in feet unless otherwise stated

23233