

4/3/30

25500

SUPERVISOR'S PLAT JOINERS ADDITION OF CHASE

Part of section 9 Twp 17N Range 11 W LAKE COUNTY MICH.

Examined and Approved
April 8 - 1930
Geo. S. Stewart
Deputy Auditor General

KNOW ALL MEN BY THESE PRESENTS THAT Edo H. Swarnie Supervisor of the Township of Chase, County of Lake State Michigan by virtue of the authority in me vested by Section 51 Act 172 Compiled Laws of 1929 having been duly authorized by the Town Board have caused the land described in the annexed plat to be surveyed laid out and platted to be known as "Supervisor's Plat Chase Lake Co Mich" part of section 9 Twp 17N Range 11W Twp of Lake Co Mich and that the streets and alleys as shown on said signed and sealed in presence of

W. D. Lee }
Edo H. Swarnie }
Supervisor Chase Twp
Lake Co Mich

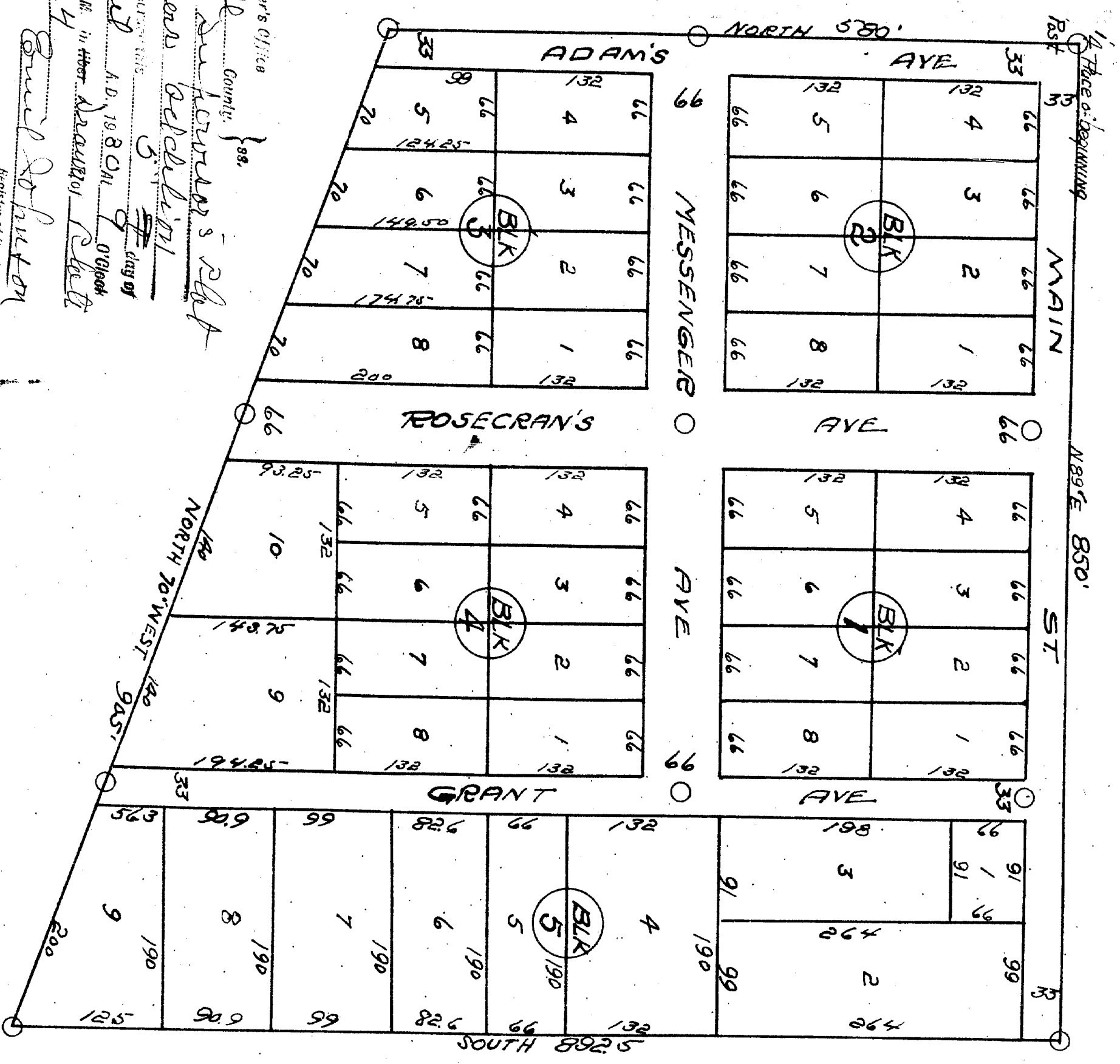
State of Michigan }
County of Lake }
On this 13 day of February A.D. 1930. before me
a Notary Public in and for said County Supervisor of Chase Twp known to me to be the person who executed the above dedication and acknowledged the same to be his free act and deed as such
Amiel P. Willmore
Notary Public
My Commission expires December 1931

DESCRIPTION of Land Platted
The land embraced in the annexed plat of Joiners Addition is described as follows: Beginning at a post common to Secs 4 and 9 T7N R11W Lake County Mich. Thence N 89° E 850 ft. Thence S 87° E 580 ft. Thence N 70° W 905 ft. Thence North 580 ft. to Place of beginning

SURVEYOR'S CERTIFICATE
I hereby certify that the plat hereon delineated is a correct one and that permanent metal monuments of not less than one inch in diameter and fifteen inches in length set in a concrete base at least four inches in diameter and twenty eight inches in length have been placed at all points marked thus (O) as thereon shown in all angles in the boundaries of the land platted at all intersections of streets and alleys and the intersection of streets and alleys with the boundaries of the plots as shown on said plat.
Edo H. Swarnie
Registrar

CERTIFICATES of Approval
MUNICIPAL
This plat was approved by the Township Board of the Township of Chase on the day of Feb. 1930
Joseph E. Willmore
Township Clerk

County Board
This plat was approved on the 11 day of Feb. 1930
Charles J. Stewart County Clerk
Walter C. Stewart County Treasurer



1" = 100 ft
All dimensions are
in feet or decimals
hereof

Notary Public
Edo H. Swarnie
Notary Public
My Commission Expires
December 1931

FILED IN PUBLIC GENERAL'S OFFICE
April 9 - 1930
Geo. S. Stewart