

# TIMBER TRAILS

44051

THE NE 1/4 SEC. 28 T18N R11W  
PINORA TWP.  
LAKE CO., MICH.

SHEET NO. 1 OF 2 SHEETS

### DEDICATION:

Know all men by these presents, that we, Porter-Mulder Land Co., a Michigan Corporation, by Gerald A. Derks, President, and Kenneth E. Fauble, Secretary, as proprietors, have caused the land embraced in the annexed plat to be surveyed, laid out, and platted, to be known as "TIMBER TRAILS", The NE 1/4 Sec. 28, T18N R11W, Pinora Twp., Lake Co., Mich., and that the roads as shown on said plat are hereby dedicated to the use of the public.

Signed and sealed  
In the presence of:

PORTER-MULDER LAND CO.

*Gerald A. Derks*  
Gerald A. Derks

*Kenneth E. Fauble*  
Kenneth E. Fauble, Pres.

*Trane Mastee*  
Trane Mastee

*Kenneth E. Fauble*  
Kenneth E. Fauble Sec.

STATE OF MICHIGAN )  
COUNTY OF MUSKEGON) ss

On this 2nd day of May A.D. 1961, before me, a Notary Public in and for said county, appeared Gerald A. Derks, and Kenneth E. Fauble, to me personally known, who being each by me duly sworn did say that they are the President and Secretary respectively of the Porter-Mulder Land Co., a Michigan corporation, and that the seal affixed to said instrument is the corporate seal of said corporation by authority of it's board of directors, and the said Gerald A. Derks and Kenneth E. Fauble acknowledged said instrument to be the free act and deed of said corporation.

My commission expires 12/15/62

*Kopa D. Carlson*  
Kopa D. Carlson  
Notary Public  
Muskegon Co., Mich.

### DESCRIPTION:

The land embraced in the annexed plat of "TIMBER TRAILS", The NE 1/4 Sec. 28, T18N R11W, Pinora Twp., Lake Co., Mich., is described as beginning at the NE Corner said Sec. 28, thence S 1°-44'-40" E along the East line said Sec. 28, 2636.88 feet to the E. 1/4 corner thereof, thence N 89°-19'-20" W along the East and West 1/4 line said sec. 28, 2996.15 feet to the center 1/4 corner thereof, thence N 1°-22'-30" W along the North and South 1/4 line said sec. 28, 2609.69 feet to the N. 1/4 corner thereof, thence S 89°-54'-40" E along the North line said Sec. 28, 2578.35 feet to the point of beginning.  
.....Plat contains a total of thirty-seven (37) lots.....

### SURVEYOR'S CERTIFICATE:

I hereby certify that the plat hereon delineated is a correct one, and that permanent metal monuments consisting of bars not less than one-half inch in diameter, and thirty-six inches in length, encased in a concrete cylinder not less than four inches in diameter and thirty-six inches in depth, have been placed at points marked thus (O) and thus (⊕) as thereon shown at all angles in the boundaries of the land platted, at all angles and intersections of roads, and at all intersections of roads with the boundaries of the plat as shown on said plat.

*George Blass*  
George Blass R.L.S. #5489

### CERTIFICATE OF APPROVAL BY COUNTY BOARD:

This plat was approved on the 11th day of May 1961 by the Lake County Plat Board.

*Earl V. Utter*  
Earl V. Utter Co. Clerk

*Earl Gibson*  
Earl Gibson Co. Treas.

*Gary Burnett*  
Gary Burnett Chr. Bd. of Supr.

*John R. Watson*  
John R. Watson Dr. Comm

### CERTIFICATE OF MUNICIPAL APPROVAL:

This plat was approved by the township board of the township of Pinora at a meeting held on the 9th day of May 1961.

*Merwin Weck*  
Merwin Weck Twp. Clerk

### CERTIFICATE OF APPROVAL BY BOARD OF COUNTY ROAD COMMISSIONERS:

This plat has been examined and was approved on the 14th day of May 1961, by the Lake County Board of Road Commissioners.

*N. E. Wicks*  
N. E. Wicks Chairman.

*Alfred Kinney*  
Alfred Kinney Member

*Albert Bertley*  
Albert Bertley Member.

Register Office  
Lake County  
Plat of  
Timber Trails  
was Recorded this 22nd day of  
May A.D., 1961 at 9:00 o'clock  
A.M. in Liber 3 of Plats  
on Page 4  
July 21, 1961  
Recorder of Deeds

Examine this entry in this copy of map or plat forwarded the Register of deeds for recording.  
Date May 18, 1961  
FILED IN REGISTER GENERAL'S DEPT.  
EXAMINED AND APPROVED  
Date May 18, 1961  
*Otis M. Smith*  
OTIS M. SMITH  
AUDITOR GENERAL  
By *Richard E. Lerner*  
Richard E. Lerner, Tax Examiner

### COUNTY TREASURER'S CERTIFICATE RELATING TO TAXES:

Office of the county treasurer, Lake Co., Mich.  
I hereby certify that there are no tax liens or titles held by the State on the lands described hereon, and that there are no tax liens or titles held by individuals on said lands, for the five years preceding the 15th day of May 1961, and that the taxes for said period of five years are paid as shown by the records of this office.

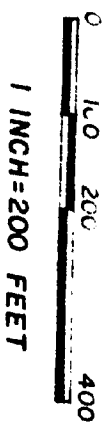
This certificate does not apply to taxes, if any, now in the process of collection by township, or county collecting officers.

*Earl Gibson*  
Earl Gibson Co. Treas.

# TIMBER TRAILS

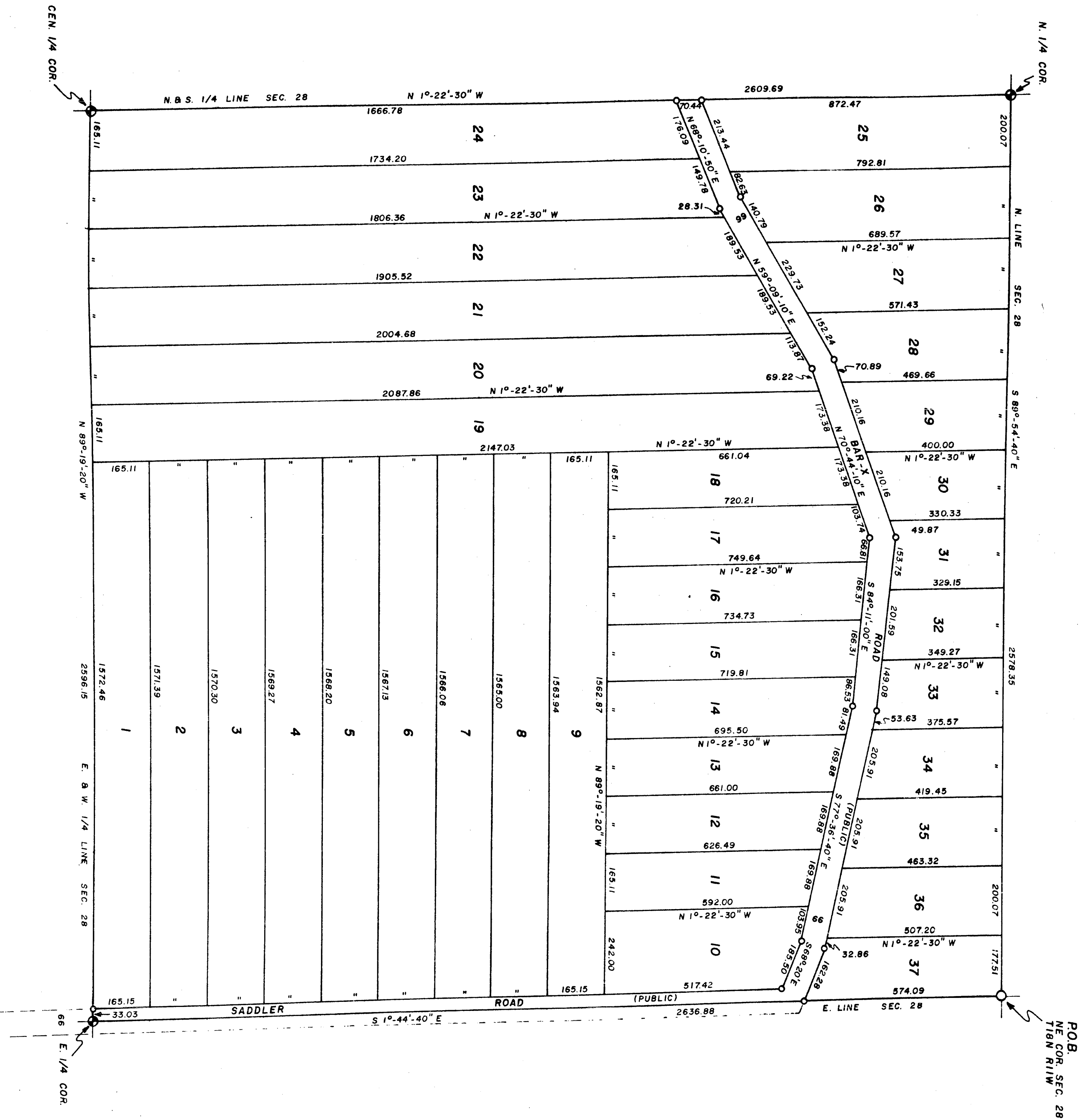
THE NE 1/4 SEC. 28 T18N R11W  
 PINORA TWP.  
 LAKE CO., MICH.

SCALE



ALL DIMENSIONS ARE IN FEET  
 AND DECIMALS THEREOF

SHEET NO. 2 OF 2 SHEETS



P.O.B.  
 NE COR. SEC. 28  
 T18N R11W