

COPY
 Register's Office
 Lake County, Mich.
 Plot of Sunset View
 was Recorded this 5th day of
Dec. A.D., 1957 at 11:00 o'clock
A.M. in Liber 2 of plate
27
Jeff V. Utter
 ORIGINAL ON FILE

SUNSET VIEW

Part of S 1/2 of SE 1/4 Sec. 4 T19N R14W
 SAUBLE TWP
LAKE CO. MICH

SCALE
 1" = 100'

All dimensions are in feet and decimals thereof.

DEDICATION

Know all men by these presents, that I, Martha Waite, a widow, as proprietor, have caused the land embraced in the annexed plat to be surveyed, laid out and platted, to be known as SUNSET VIEW, part of S 1/2 of SE 1/4 Sec. 4, T19N R14W, Sauble Twp. Lake Co. Mich. and that the drives and park as shown hereon are private and are dedicated to the use of the lot owners in said plat and to the owners of lands within the boundaries of the property described as: The S 1/2 of SE 1/4 Sec. 4, T19N R14W, Sauble Twp. Lake Co. Mich.

Signed and sealed in the presence of:
George Blass
 George Blass
Robert A. Griffin
 Robert A. Griffin

Martha Waite
 Martha Waite

STATE OF MICHIGAN
 COUNTY OF LAKE

On this 2nd day of November 1957, before me, a notary public in and for said county, personally came the above named Martha Waite, known to me to be the person who executed the above dedication and acknowledged the same to be her free act and deed.

George Blass
 Notary Public, Lake County, Michigan
 My Commission Expires Dec. 27, 1958
 George Blass, Notary Public
 Lake County, Michigan

CERTIFICATE OF MUNICIPAL APPROVAL

This plat was approved by the township board of the township of Sauble at a meeting held on the 12 day of Nov 1957.

Martha Waite
 Martha Waite Twp. Clerk

CERTIFICATE OF APPROVAL BY COUNTY BOARD

This plat was approved on the 26 day of Nov 1957.

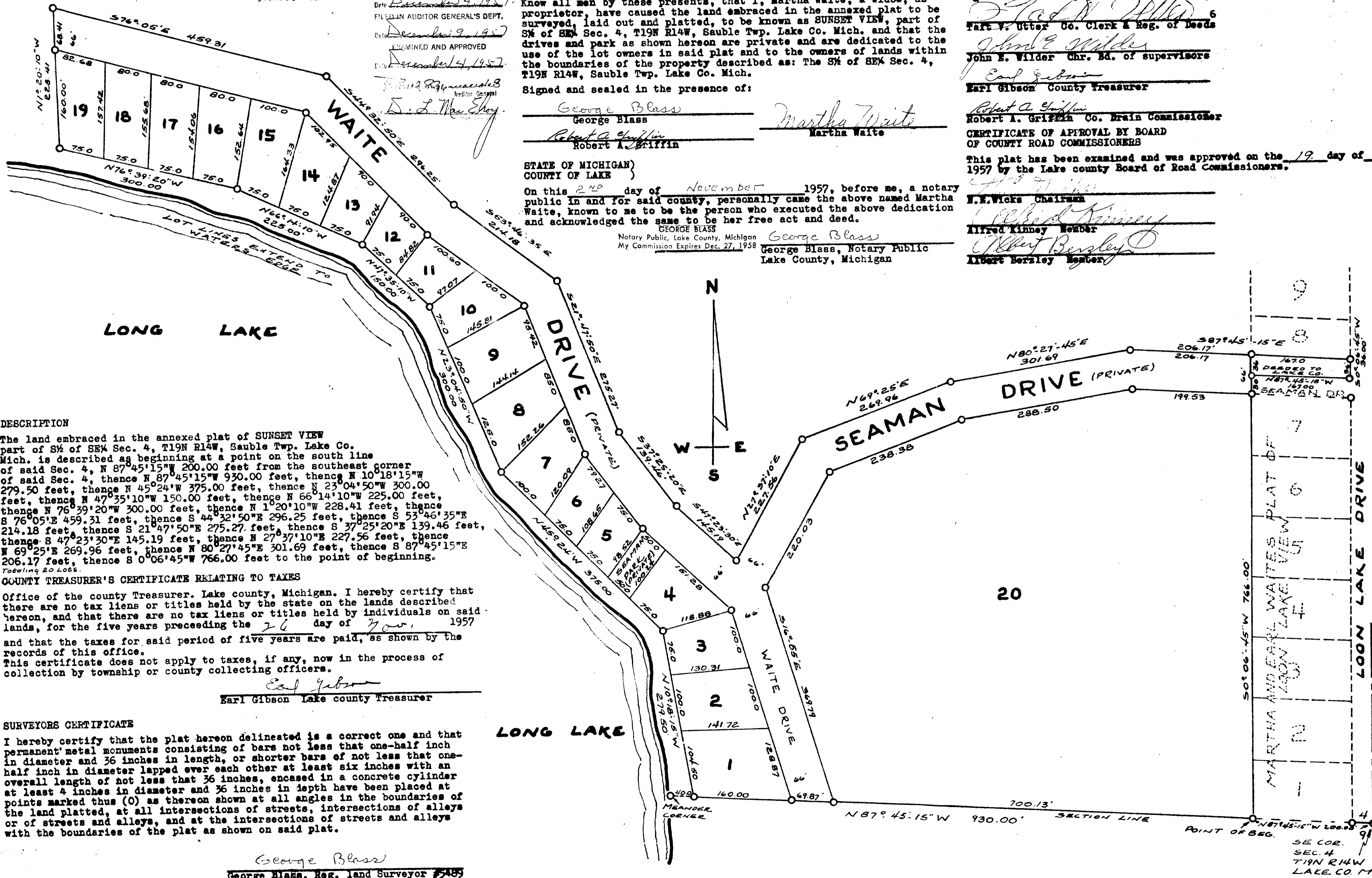
by the Lake county plat board
John E. Wilder 6
 John E. Wilder Co. Clerk & Reg. of Deeds
John E. Wilder
 John E. Wilder Chr. Bd. of supervisors
Earl Gibson
 Earl Gibson County Treasurer

Robert A. Griffin
 Robert A. Griffin Co. Brain Commissioner

CERTIFICATE OF APPROVAL BY BOARD OF COUNTY ROAD COMMISSIONERS

This plat has been examined and was approved on the 19 day of Nov 1957 by the Lake county Board of Road Commissioners.

M.E. Wicks Chairman
Alfred Kinney Member
Albert Bersley Member



DESCRIPTION

The land embraced in the annexed plat of SUNSET VIEW part of S 1/2 of SE 1/4 Sec. 4, T19N R14W, Sauble Twp. Lake Co. Mich. is described as beginning at a point on the south line of said Sec. 4, N 87°45'15"W 200.00 feet from the southeast corner of said Sec. 4, thence N 87°45'15"W 930.00 feet, thence N 10°18'15"W 279.50 feet, thence N 45°24'W 375.00 feet, thence N 23°04'50"W 300.00 feet, thence N 47°35'10"W 150.00 feet, thence N 66°14'10"W 225.00 feet, thence N 76°39'20"W 300.00 feet, thence N 1°20'10"W 228.41 feet, thence S 76°05'E 459.31 feet, thence S 44°32'50"E 296.25 feet, thence S 53°46'35"E 214.18 feet, thence S 21°47'50"E 275.27 feet, thence S 37°25'20"E 139.46 feet, thence S 47°23'30"E 145.19 feet, thence N 27°37'10"E 227.56 feet, thence N 69°25'E 269.96 feet, thence N 80°27'45"E 301.69 feet, thence S 87°45'15"E 206.17 feet, thence S 0°06'45"W 766.00 feet to the point of beginning.

COUNTY TREASURER'S CERTIFICATE RELATING TO TAXES

Office of the county Treasurer, Lake county, Michigan. I hereby certify that there are no tax liens or titles held by the state on the lands described hereon, and that there are no tax liens or titles held by individuals on said lands, for the five years preceeding the 26 day of Nov, 1957 and that the taxes for said period of five years are paid, as shown by the records of this office. This certificate does not apply to taxes, if any, now in the process of collection by township or county collecting officers.

Earl Gibson
 Earl Gibson Lake county Treasurer

SURVEYORS CERTIFICATE

I hereby certify that the plat hereon delineated is a correct one and that permanent metal monuments consisting of bars not less than one-half inch in diameter and 36 inches in length, or shorter bars of not less than one-half inch in diameter lapped over each other at least six inches with an overall length of not less than 36 inches, encased in a concrete cylinder at least 4 inches in diameter and 36 inches in length have been placed at points marked thus (O) as thereon shown at all angles in the boundaries of the land platted, at all intersections of streets, intersections of alleys or of streets and alleys, and at the intersections of streets and alleys with the boundaries of the plat as shown on said plat.

George Blass
 George Blass, Reg. Land Surveyor #5489

40169