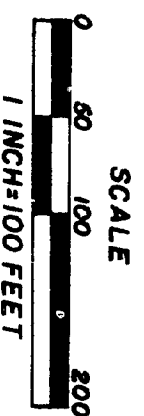


STARRECHO

PART OF SECTIONS 23-24 & 25
T17N R14W LAKE TWP
LAKE CO, MICH.



SHEET 1 OF 2 SHEETS

COPY
Register's Office
Lake County, S.S.

Plat of

Starrecho

Recorded this 17th day of

January 1963 at 9:00 o'clock

of the County Clerk

of Lake County, Michigan

in Parcel 16 of 17

of plat

of

of

of

of

of

of

of

of

of

of

of

of

of

of

of

of

of

of

of

of

of

of

of

of

of

of

of

of

of

of

of

of

of

of

of

of

of

of

of

of

of

of

of

of

of

of

of

of

of

of

of

of

of

of

of

of

of

of

of

of

of

of

of

of

of

of

of

of

of

of

of

of

January 16, 1963
January 21, 1963
January 16, 1963

ALL LAKE FRONT LOTS EXTEND TO WATERS
EDGE.

DEDICATION:
KNOW ALL MEN BY THESE PRESENTS THAT WE CURTIS L. SMITH, AS PROPRIETOR, AND ARDIS M. SMITH, HIS WIFE, HAVE CAUSED THE LAND EMBRACED IN THE ANNEXED PLAT TO BE SURVEYED, LAID OUT, AND PLATTED TO BE KNOWN AS "STARRECHO" PART OF SECTIONS 23, 24 AND 25, T17N R14W, LAKE TWP, LAKE CO, MICHIGAN, AND THAT NEGARINIS DRIVE IS HEREBY DEDICATED TO THE PUBLIC, AND ECHO DRIVE AND ECHO COURT ARE PRIVATE, AND DEDICATED TO THE USE OF THE LOT OWNERS IN SAID PLAT, AND ECHO PARK IS PRIVATE AND DEDICATED TO THE LOT OWNERS OF LOTS 2 TO 9 INCLUSIVE, IN SAID PLAT and is means of ingress and egress for lots 2 to 9 inclusive.
SIGNED AND SEALED IN THE PRESENCE OF:
George Brass
WITNESS
CURTIS L. SMITH
L.S.
Ardis M. Smith
L.S.

STATE OF MICH. }
COUNTY OF LAKE }
ON THIS 15TH DAY OF Dec 1962, BEFORE ME, A NOTARY PUBLIC IN AND FOR SAID COUNTY, PERSONALLY CAME THE ABOVE NAMED CURTIS L. SMITH AND ARDIS M. SMITH, HIS WIFE, KNOWN TO ME TO BE THE PERSONS WHO EXECUTED THE ABOVE DEDICATION, AND ACKNOWLEDGED THE SAME TO BE THEIR FREE ACT AND DEED.
MY COMMISSION EXPIRES JUNE 20, 1966.
CLINTON E. GOLE
NOTARY PUBLIC LAKE CO, MICHIGAN

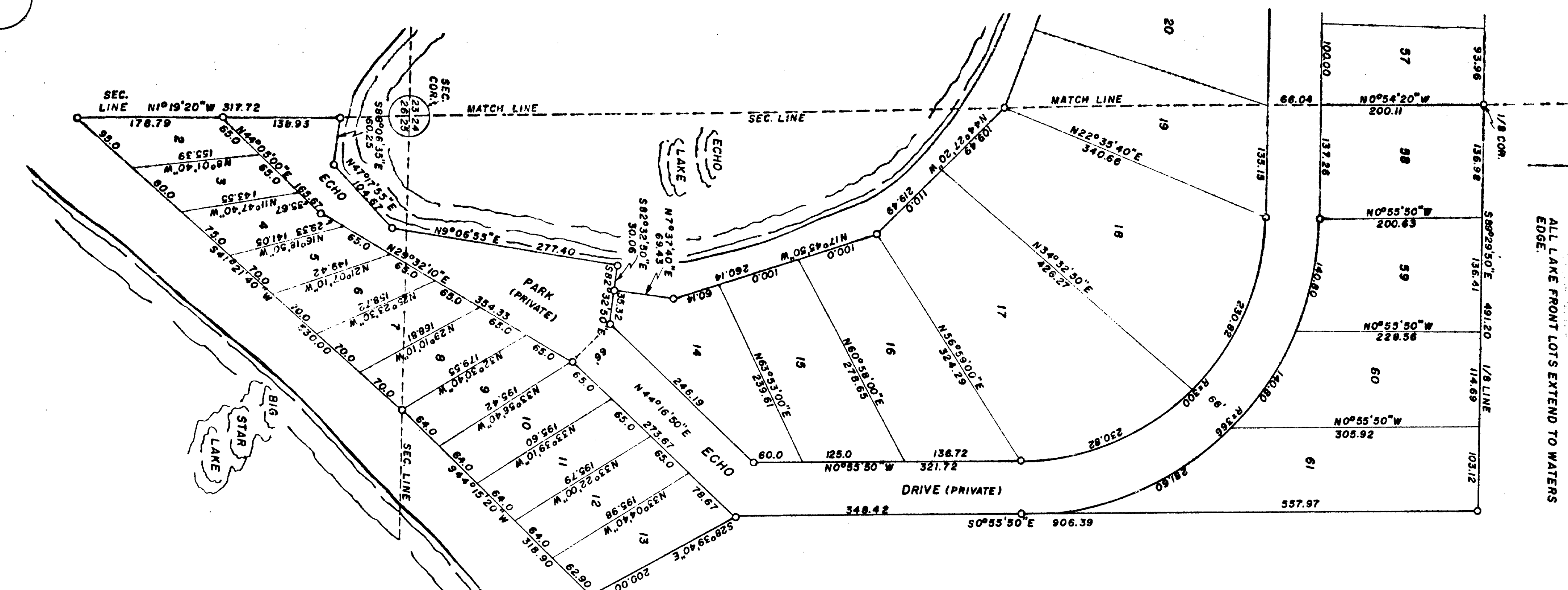
DESCRIPTION:
THE LAND EMBRACED IN THE ANNEXED PLAT OF "STARRECHO" PART OF SECTIONS 23, 24 AND 25, T17N R14W, LAKE TWP, LAKE CO, MICHIGAN, IS DESCRIBED AS, BEGINNING AT THE EAST 1/8 COR. ON THE SOUTH LINE OF SEC. 23, T17N R14W, LAKE TWP SAID POINT OF BEGINNING BEING N88°53'10"W 137.07 FEET FROM THE S.E. COR. OF SAID SEC. 23. THENCE N09°46'20"W 1309.40 FEET, THENCE S89°05'30"E 792.48 FEET, THENCE S73°54'20"E 161.25 FEET, THENCE N76°51'40"E 174.28 FEET, THENCE S89°05'30"E 217.38 FEET, THENCE S89°29'50"E 491.20 FEET, THENCE S0°59'50"E 906.39 FEET, THENCE S28°39'40"E 200.00 FEET, THENCE S44°15'20"W 318.90 FEET, THENCE S41°21'40"W 530.00 FEET, THENCE N1°19'20"W 317.72 FEET, THENCE S88°06'38"E 60.25 FEET, THENCE N47°17'55"E 104.67 FEET, THENCE N9°06'55"E 277.40 FEET, THENCE S82°32'50"E 30.06 FEET, THENCE N7°37'40"E 69.43 FEET, THENCE N17°45'50"W 260.14 FEET, THENCE N44°27'20"W 219.49 FEET, THENCE N69°07'50"W 409.37 FEET, THENCE S58°47'40"W 185.54 FEET, THENCE S25°03'25"W 119.70 FEET, THENCE S29°56'05"E 177.03 FEET, THENCE S49°16'35"E 138.18 FEET, THENCE S23°05'35"E 169.51 FEET, THENCE S34°29'55"E 322.86 FEET, THENCE N88°53'10"W 1176.42 FEET TO THE POINT OF BEGINNING.
PLAT CONTAINS A TOTAL OF SIXTY-ONE (61) LOTS.

SURVEYOR'S CERTIFICATE:
I HEREBY CERTIFY THAT THE PLAT HEREON DELINEATED IS A CORRECT ONE, AND THAT PERMANENT METAL MONUMENTS CONSISTING OF IRON BARS NOT LESS THAN ONE-HALF INCH IN DIAMETER AND THIRTY-SIX INCHES IN LENGTH, ENCASED IN CONCRETE CYLINDERS AT LEAST FOUR INCHES IN DIAMETER AND THIRTY-SIX INCHES IN DEPTH, HAVE BEEN PLACED AT ALL POINTS MARKED THUS (o) AS THEREON SHOWN AT ALL ANGLES IN THE BOUNDARIES OF THE LAND PLATTED, AT ALL INTERSECTIONS OF DRIVES, COURTS AND PARKS, AND AT ALL INTERSECTIONS OF DRIVES, COURTS AND PARKS WITH THE BOUNDARIES OF THE PLAT AS THEREON SHOWN ON SAID PLAT.

COUNTY TREASURER'S CERTIFICATE
RELATING TO TAXES:
OFFICE OF THE COUNTY TREASURER LAKE CO, MICH.
I HEREBY CERTIFY THAT THERE ARE NO TAX LIENS OR TITLES HELD BY THE STATE ON THE LANDS HEREON DESCRIBED, AND THAT THERE ARE NO TAX LIENS OR TITLES HELD BY INDIVIDUALS ON SAID LANDS, FOR THE FIVE YEARS PRECEDING THE 15TH DAY OF Dec 1962, AND THE TAXES FOR SAID PERIOD OF FIVE YEARS ARE PAID, AS SHOWN BY THE RECORDS OF THIS OFFICE.
THIS CERTIFICATE DOES NOT APPLY TO TAXES, IF ANY, NOW IN THE PROCESS OF COLLECTION, BY TOWNSHIP, OR COUNTY COLLECTING OFFICERS.
George Brass
R.L.S. NO. 5489

CERTIFICATE OF APPROVAL BY THE COUNTY BOARD:
THIS PLAT WAS APPROVED ON THE 15TH DAY OF Dec 1962, BY THE LAKE COUNTY PLAT BOARD.
Earl Gibson
COUNTY TREAS.
Gary Burnett
CHR. BD. SUPR.
Tart Utter
CO. CLERK
John R. Matson
DRAIN COMM.

CERTIFICATE OF APPROVAL BY THE COUNTY BOARD OF ROAD COMMISSIONERS:
THIS PLAT HAS BEEN EXAMINED AND WAS APPROVED ON THE 19TH DAY OF Dec 1962, BY THE LAKE COUNTY BOARD OF ROAD COMMISSIONERS.
Earl Gibson
CO. TREAS.
John R. Matson
DRAIN COMM.
N.E. Wicks
CHAIRMAN
Alfred Kinney
MEMBER
Albert Berzley
MEMBER
CERTIFICATE OF MUNICIPAL APPROVAL:
THIS PLAT WAS APPROVED BY THE TOWNSHIP BOARD OF THE TOWNSHIP OF LAKE AT A MEETING HELD ON THE 19TH DAY OF Dec 1962, AND COMPLES WITH SECTION 19A, AND THE WIDTH OF THE LOTS CONFORM WITH REQUIREMENTS OF SECTION 30, ACT 172, OF 1929, AS AMENDED.
Merrill Maddox
TWP. CLERK



STARRECHHO

PART OF SECTIONS 23-24 & 25
T17N R14W LAKE TWP
LAKE CO., MICH.

SCALE

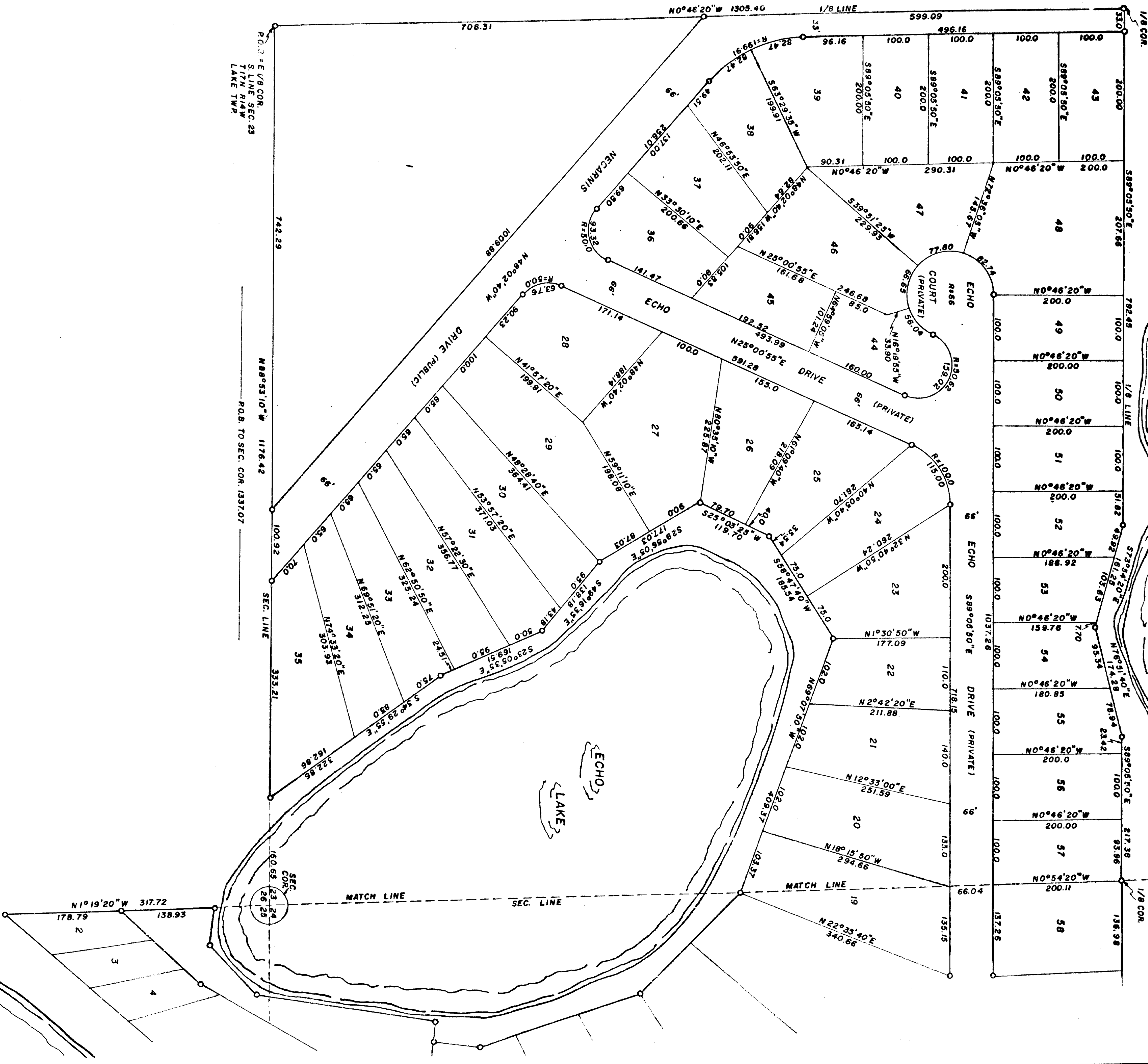


ALL DIMENSIONS ARE IN FEET AND DECIMALS

SHEET 2 OF 2 SHEETS



ALL LAKE FRONT LOTS EXTEND TO
WATERS EDGE.



2025.5.10
ZACHARIA WIER

45381