

PLEASANT ACRES

Part of W 1/2 of SW 1/4-SEC 3 T19N R14W
SAUBLE TWP
LAKE CO. MICH.

SCALE
1/17" = 100'

All dimensions are in feet and decimals thereof

DEDICATION

Know all men by these presents, that we Julius J. Bahr as proprietor, and Mabel Bahr his wife, have caused the land embraced in the annexed plat to be surveyed, laid out and platted, to be known as PLEASANT ACRES, part of W 1/2 of SW 1/4 Sec. 3, T19N R14W, Sauble Twp. Lake Co. Mich. And that the Drive shown as Loon Lake Drive is public, and that the Drive shown as Bahr Drive is private and dedicated to the use of the property owners in said plat.

Signed and sealed in the presence of:

George B. Glass I.S.
George Glass
Julius J. Bahr I.S.
Julius J. Bahr
Mabel Bahr I.S.
Mabel Bahr
STATE OF MICHIGAN
COUNTY OF LAKE

On this 9TH day of November 1957, before me, a Notary Public in and for said county, personally came the above named Julius J. Bahr and Mabel Bahr his wife, known to me to be the persons who executed the above dedication, and acknowledged the same to be their free act and deed.

George B. Glass
George Glass

My commission expires Dec. 27, 1958. Notary Public, Lake Co. Michigan.

DESCRIPTION

The land embraced in the annexed plat of PLEASANT ACRES, part of the W 1/2 of SW 1/4 Sec. 3, T19N R14W, Sauble Twp. Lake Co. Mich. is described as beginning at a point on the west line of said section 3, said point being N 0°06'45"W 373.00 feet from the southwest corner of said section 3, thence N 0°06'45"W 2009.40 feet, thence N 88°26'30"E 275.00 feet, thence S 0°57'40"W 225.00 feet, thence S 8°24'50"W 225.00 feet, thence S 41°15'40"W 75.00 feet, thence S 68°21'10"E 150.00 feet, thence S 35°04'34"E 225.00 feet, thence S 66°47'10"E 225.00 feet, thence S 30°36'30"E 200.00 feet, thence S 22°09'45"W 386.15 feet, thence S 57°01'40"W 225.00 feet, thence S 22°09'45"W 300.00 feet, thence S 57°01'40"W 225.00 feet, thence S 88°00'45"W 245.86 feet to the point of beginning. *724 front lines of all lots are along the shore line.*

SURVEYORS CERTIFICATE

I hereby certify that the plat hereon delineated is a correct one and that permanent metal monuments consisting of bars not less than one-half inch in diameter and 36 inches in length, or shorter bars of not less than one-half inch in diameter lapped over each other at least six inches with an overall length of at least 36 inches, enclosed in a concrete cylinder at least 4 inches in diameter and 36 inches in depth have been placed at points marked thus (O) as thereon shown at all angles in the boundaries of the land platted, at all intersections of streets, intersections of alleys or of streets and alleys, and at the intersections of streets and alleys with the boundaries of the land platted.

George B. Glass
George B. Glass
Reg. Land Surveyor #5489

CERTIFICATE OF MUNICIPAL APPROVAL

This plat was approved by the township board of the township of Sauble at a meeting held on the 11TH day of Nov 1957.

Martha Waite
Martha Waite
Twp. Clerk.

CERTIFICATE OF APPROVAL BY THE COUNTY BOARD

This plat was approved on the 26TH day of Nov 1957

Earl Gibson
Earl Gibson
County Clerk & Reg. of Deeds

John E. Wilder
John E. Wilder, Chf. Bd. of Supervisors

Earl Gibson
Earl Gibson, County Treasurer

Robert A. Griffin
Robert A. Griffin, Co. Drain Commissioner

CERTIFICATE OF APPROVAL BY BOARD OF COUNTY ROAD COMMISSIONERS

This plat has been examined and was approved on the 19 day of Nov 1957 by the Lake County Board of Road Commissioners.

N.E. Wicks
N.E. Wicks, Chairman

Alfred Kinney
Alfred Kinney, Member

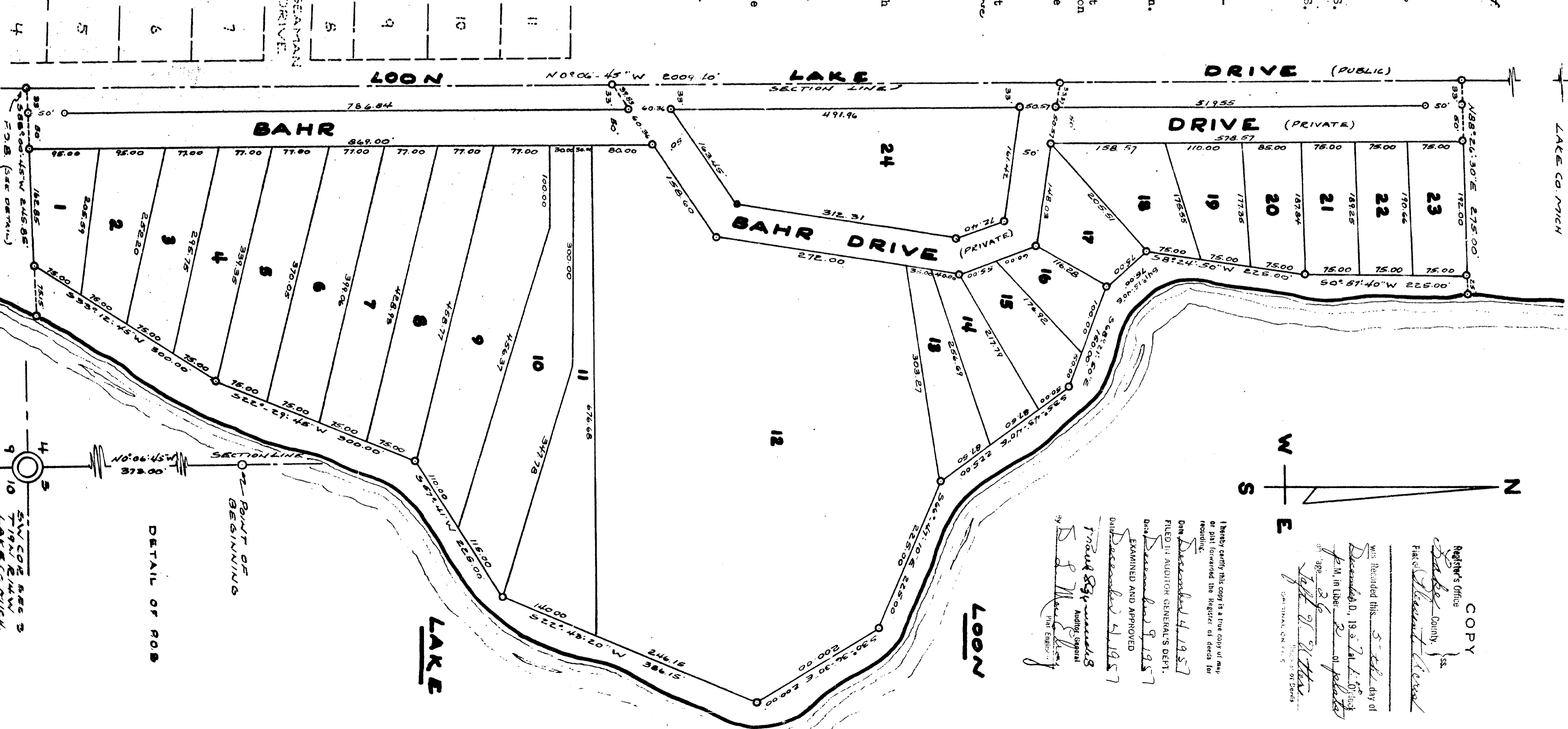
Albert Hetzley
Albert Hetzley, Member

COUNTY TREASURERS CERTIFICATE RELATING TO TAXES

Office of the County Treasurer, Lake Co. Michigan. I hereby certify that there are no tax liens or titles held by the State on the lands described hereon, and that there are no tax liens or titles held by individuals on said lands, for the five years preceding the 26 day of November 1957 and that the taxes for said period of five years are paid, as shown by the records of this office. If any, now in the hands of the collector, are not applied to taxes, the process of collection by township or county collecting officers.

Earl Gibson
Earl Gibson, Lake Co. Treasurer.

MARTHA AND EARL WAITES PLAT OF LOON LAKE VIEW



40168

COPY

Register's Office
Lake County, Mich.
Was Recorded this 5TH day of December, 1957 at 2:14 P.M. in Liber 2 of pelala
John E. Wilder
ORIGINAL ON FILE

I hereby certify this copy is a true copy of any or part forwarded the Register of Deeds for recording.
Dated December 4, 1957
FILED IN AUDITOR GENERAL'S DEPT.
Dated December 9, 1957
EXAMINED AND APPROVED
Dated December 4, 1957
Frank S. Williams
Auditor General