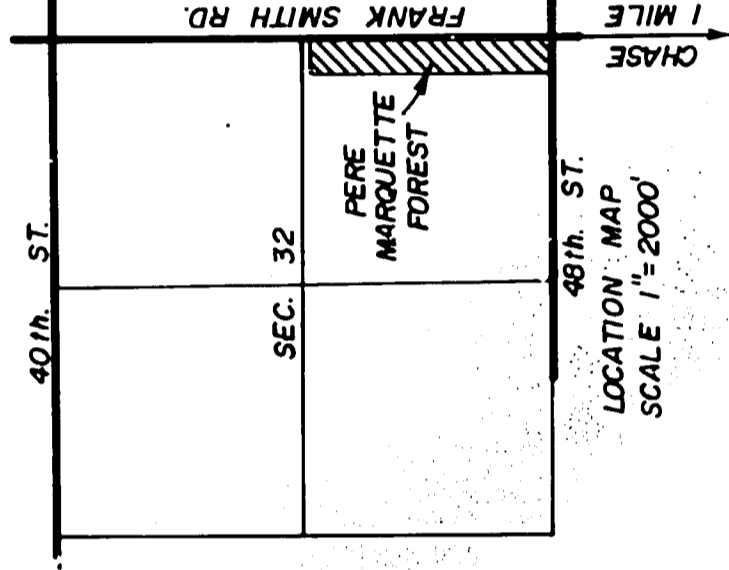


"PERE MARQUETTE FOREST"

SHEET 1 OF 2 SHEETS

PART OF THE E.1/2-S.E.1/4, SEC. 32
T18N R11W PINORA TWP, LAKE CO., MICH.

ALL DIMENSIONS ARE IN FEET.
ALL CURVE MEASUREMENTS ARE ARC DIMENSION.
BEARINGS WERE ESTABLISHED FROM SOLAR
OBSERVATION JULY 20, 1971.
CONCRETE MONUMENTS HAVE BEEN PLACED AT
ALL POINTS MARKED THUS (o).
LOT CORNERS HAVE BEEN MARKED WITH 18" "I" IRONS.

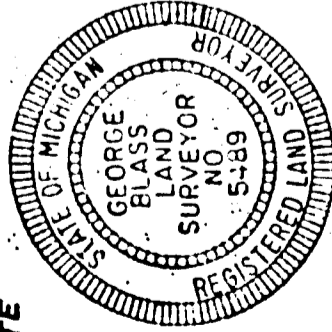


SURVEYOR'S CERTIFICATE:

I, GEORGE BLASS, SURVEYOR, CERTIFY, THAT I HAVE SURVEYED, DIVIDED AND MAPPED THE LAND SHOWN ON THIS PLAT, DESCRIBED AS FOLLOWS: "PERE MARQUETTE FOREST", PART OF THE E.1/2-S.E.1/4, SEC. 32, T18N R11W PINORA TWP, LAKE CO., MICH. BEGINNING AT THE S.E. CORNER OF SAID SEC. 32, THENCE NO^o24'14"W ALONG THE E. LINE OF SAID SEC. 2579.96 FT. TO A POINT THAT IS SO^o24'14"E 66.60 FT. FROM THE E.1/4 COR. OF SAID SEC., THENCE S89^o48'25"W PARALLEL WITH THE S. LINE OF SAID SEC. 433.00 FT., THENCE SO^o24'14"E PARALLEL WITH SAID E. LINE 2579.96 FT TO SAID S. LINE, THENCE N89^o48'25"E ALONG SAID S. SEC. LINE 433.00 FT. TO THE POINT OF BEGINNING CONTAINING .26 LOTS. THAT I HAVE MADE SUCH SURVEY, LAND-DIVISION AND PLAT BY THE DIRECTION OF THE OWNERS OF SUCH LAND, THAT SUCH PLAT IS A CORRECT REPRESENTATION OF ALL THE EXTERIOR BOUNDARIES OF THE LAND SURVEYED AND THE SUBDIVISION OF IT, THAT THE REQUIRED MONUMENTS AND LOT MARKERS HAVE BEEN LOCATED IN THE GROUND OR THAT SURETY HAS BEEN DEPOSITED WITH THE MUNICIPALITY, AS REQUIRED BY SECTION 125 OF THE ACT, THAT THE ACCURACY OF THE SURVEY IS WITHIN THE LIMITS REQUIRED BY SECTION 126 OF THE ACT. THAT THE BEARINGS SHOWN ON THE PLAT ARE EXPRESSED AS REQUIRED BY SECTION 126(3) OF THE ACT AS EXPLAINED IN THE LEGEND.

DATE Dec. 29, 1971

BLASS SURVEYS
760 WICH. AVE.
BALDWIN, MICH. 49304



George Blass
GEORGE BLASS R.L.S. 5489

PROPRIETOR'S CERTIFICATE:

WE AS PROPRIETORS CERTIFY THAT WE CAUSED THE LAND EMBRACED IN THIS PLAT TO BE SURVEYED, DIVIDED, MAPPED AND DEDICATED AS REPRESENTED ON THIS PLAT AND THAT FRANK SMITH RD. AND 48th ST. ARE FOR THE USE OF THE PUBLIC; THAT THE PUBLIC UTILITY EASEMENTS ARE PRIVATE EASEMENTS AND THAT ALL OTHER EASEMENTS ARE FOR THE USES SHOWN ON THE PLAT.

WITNESS:

George Blass
GEORGE BLASS

Clinton Cole
CLINTON COLE

Russell E. Hitzemann
RUSSELL E. HITZEMANN
426 N. U.S. 131
REED CITY, MICH. 49677

Lois M. Hitzemann
LOIS M. HITZEMANN
426 N. U.S. 131
REED CITY, MICH. 49677

Donald H. Johnson
DONALD H. JOHNSON
14132 LENORE ST.
REDFORD, MICH. 48219

STATE OF MICHIGAN } S.S.
LAKE COUNTY

PERSONALLY CAME BEFORE ME THIS 11th DAY OF Jan. 1972
THE ABOVE NAMED RUSSELL E. HITZEMANN AND LOIS M. HITZEMANN, HIS WIFE, AND DONALD H. JOHNSON, A SINGLE MAN, TO ME KNOWN TO BE THE PERSONS WHO EXECUTED THE FOREGOING INSTRUMENT AND ACKNOWLEDGED THAT THEY EXECUTED THE SAME AS THEIR FREE ACT AND DEED.

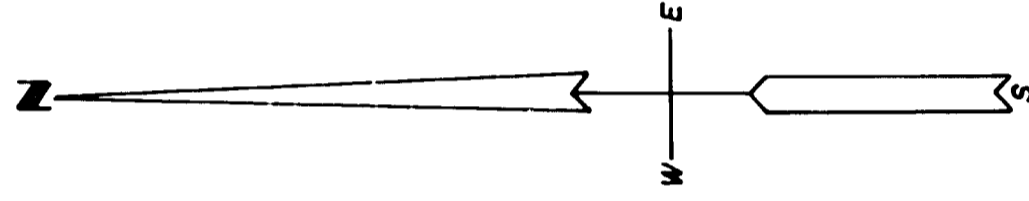
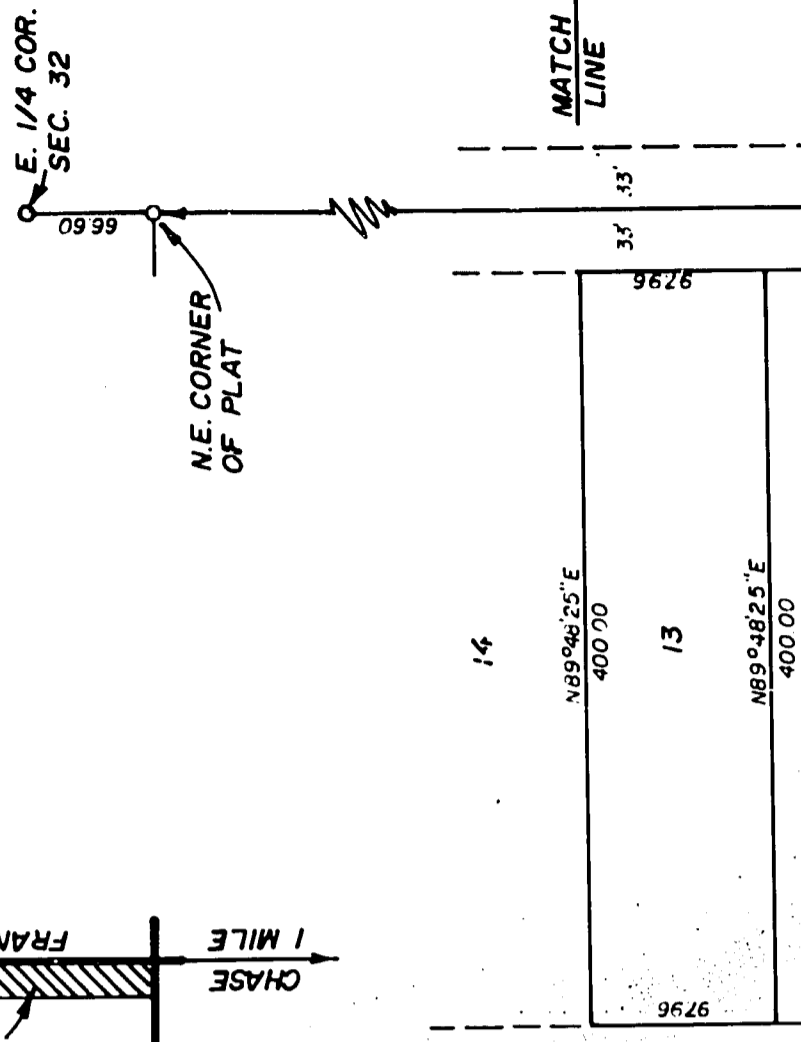
George Blass
GEORGE BLASS NOTARY PUBLIC
LAKE CO., MICH.

MY COMMISSION EXPIRES SEPT. 29, 1974

COUNTY TREASURER'S CERTIFICATE:

THE RECORDS IN MY OFFICE SHOW NO UNPAID TAXES OR SPECIAL ASSESSMENTS FOR THE FIVE YEARS PRECEDING Jan. 14th, 1972 INVOLVING THE LANDS INCLUDED IN THIS PLAT.

Edwain Nelson
EDWAIN NELSON COUNTY TREASURER
LAKE COUNTY, MICH.



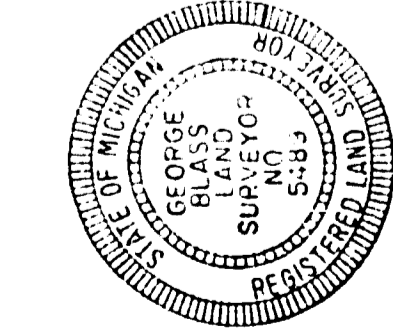
52848

UNPLATTED
CURVE DATA - CURVE "A"
RADIUS = 30.00
CENTRAL ANGLE = 90°12'39"
LONG CHORD LENGTH = 42.50
LONG CHORD BEARING = N44°42'06"E

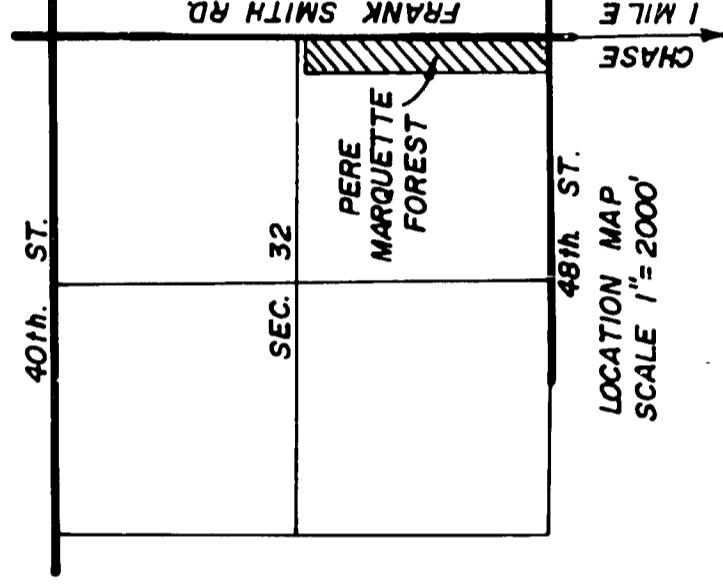
"PERE MARQUETTE FOREST"

SHEET 2 OF 2 SHEETS

PART OF THE E. 1/2-S.E. 1/4, SEC. 32
T18N R11W PINORA TWP, LAKE CO, MICH.



ALL DIMENSIONS ARE IN FEET.
ALL CURVE MEASUREMENTS ARE ARC DIMENSION.
BEARINGS WERE ESTABLISHED FROM SOLAR
OBSERVATION JULY 20, 1971.
CONCRETE MONUMENTS HAVE BEEN PLACED AT
ALL POINTS MARKED THUS (o).
LOT CORNERS HAVE BEEN MARKED WITH 18" "I" IRONS.



COUNTY DRAIN COMMISSIONER'S CERTIFICATE:

APPROVED _____ AS COMPLYING WITH SECTION 192 OF ACT 288, P.A. 1967 AND THE APPLICABLE RULE AND REGULATIONS PUBLISHED BY MY OFFICE IN THE COUNTY OF LAKE.

NAME NONE DRAIN COMMISSIONER

CERTIFICATE OF COUNTY ROAD COMMISSIONERS:

APPROVED ON JAN. 19th 1972 AS COMPLYING WITH SECTION 183 OF ACT 288, P.A. 1967, AND THE APPLICABLE RULES AND REGULATIONS OF THE BOARD OF ROAD COMMISSIONERS OF LAKE COUNTY.

Alfred Kinney MEMBER
ALFRED KINNEY
Albert Berzley MEMBER
ALBERT BERZLEY
N.E. Wicks CHAIRMAN
N.E. WICKS

CERTIFICATE OF MUNICIPAL APPROVAL:

I CERTIFY THAT THIS PLAT WAS APPROVED BY THE TOWNSHIP BOARD, OF THE TOWNSHIP OF PINORA, AT A MEETING HELD Sept. 29, 1972 AND WAS REVIEWED AND FOUND TO BE IN COMPLIANCE WITH ACT 288, P.A. 1967, AND WAS APPROVED BY DISTRICT HEALTH DEPT. No. 5 ON OCT. 18, 1971. AND COMPLIES WITH SECTION 192 OF SAID ACT.

Lewis Bowman
LEWIS BOWMAN PINORA TWP CLERK

COUNTY PLAT BOARD CERTIFICATE:

THIS PLAT HAS BEEN REVIEWED AND IS APPROVED BY THE LAKE COUNTY PLAT BOARD ON Feb. 28, 1972 AS BEING IN COMPLIANCE WITH ALL OF THE PROVISIONS OF ACT 288, P.A. 1967, AND THE PLAT BOARD'S APPLICABLE RULES & REGULATIONS.

Taffy Utter
TAFFY UTTER COUNTY CLERK AND REGISTER OF DEEDS
Edwanoir Nelson
EDWANOIR NELSON COUNTY TREASURER

Leo La Pointe
LEO LAPOINTE CHAIRMAN OF THE BOARD OF COUNTY COMMISSIONERS

RECORDING CERTIFICATE:

STATE OF MICHIGAN }
LAKE COUNTY

THIS PLAT WAS RECEIVED FOR RECORD ON THE 6 DAY OF April
A.D. 1972 AT 9:00 A.M. RECORDED IN LIBER 4 OF PLATS ON
PAGE 43

Taffy Utter
TAFFY UTTER REGISTER OF DEEDS

Certified true copy of recorded plat.

Richard E. Roman
RICHARD E. ROMAN
By *Richard E. Roman*
Richard E. Roman, Notary Public
date May 16, 1972

