

Examined and Approved
Aug 28-1929
E. L. Hanson
Deputy Auditor General

SUPERVISOR'S PLAT OF PEACOCK NE 1/4 OF SECTION 17 T19N R13W LAKE COUNTY MICH

DEDICATION
KNOW ALL MEN BY THESE PRESENTS: That I, Harry Basklett, Supervisor of Michigan, County of Lake, do hereby dedicate to the public the land embraced in the annexed plat of Supervisor's Plat of Peacock, as described as follows: Beginning at the sec. cor. com to sec 5 8-9-16-17 T19N R13W Lake County Mich thence N 89° 15' W 2647 thence S 1° 10' W 2633 thence S 89° 15' E 2641 thence N 1° 15' E 2633 to point of beginning Except for Pure Marquette R.Ry. which is described as follow. Beginning at a point N 89° 15' W 1672 from sec. cor. com. to sec 5 8-9-16-17 T19N R13W Lake County Mich (or where the E line of the R.Ry. crosses the N line of sec 7) thence N 15° 15' E 2739 thence N 89° 15' W 2647 thence N 15° 15' E 2739 thence S 89° 15' E 104 to point of beg.

DESCRIPTION OF LAND PLATTED
The land embraced in the annexed plat of Supervisor's Plat of Peacock is described as follows: Beginning at the sec. cor. com to sec 5 8-9-16-17 T19N R13W Lake County Mich thence N 89° 15' W 2647 thence S 1° 10' W 2633 thence S 89° 15' E 2641 thence N 1° 15' E 2633 to point of beginning Except for Pure Marquette R.Ry. which is described as follow. Beginning at a point N 89° 15' W 1672 from sec. cor. com. to sec 5 8-9-16-17 T19N R13W Lake County Mich (or where the E line of the R.Ry. crosses the N line of sec 7) thence N 15° 15' E 2739 thence N 89° 15' W 2647 thence N 15° 15' E 2739 thence S 89° 15' E 104 to point of beg.

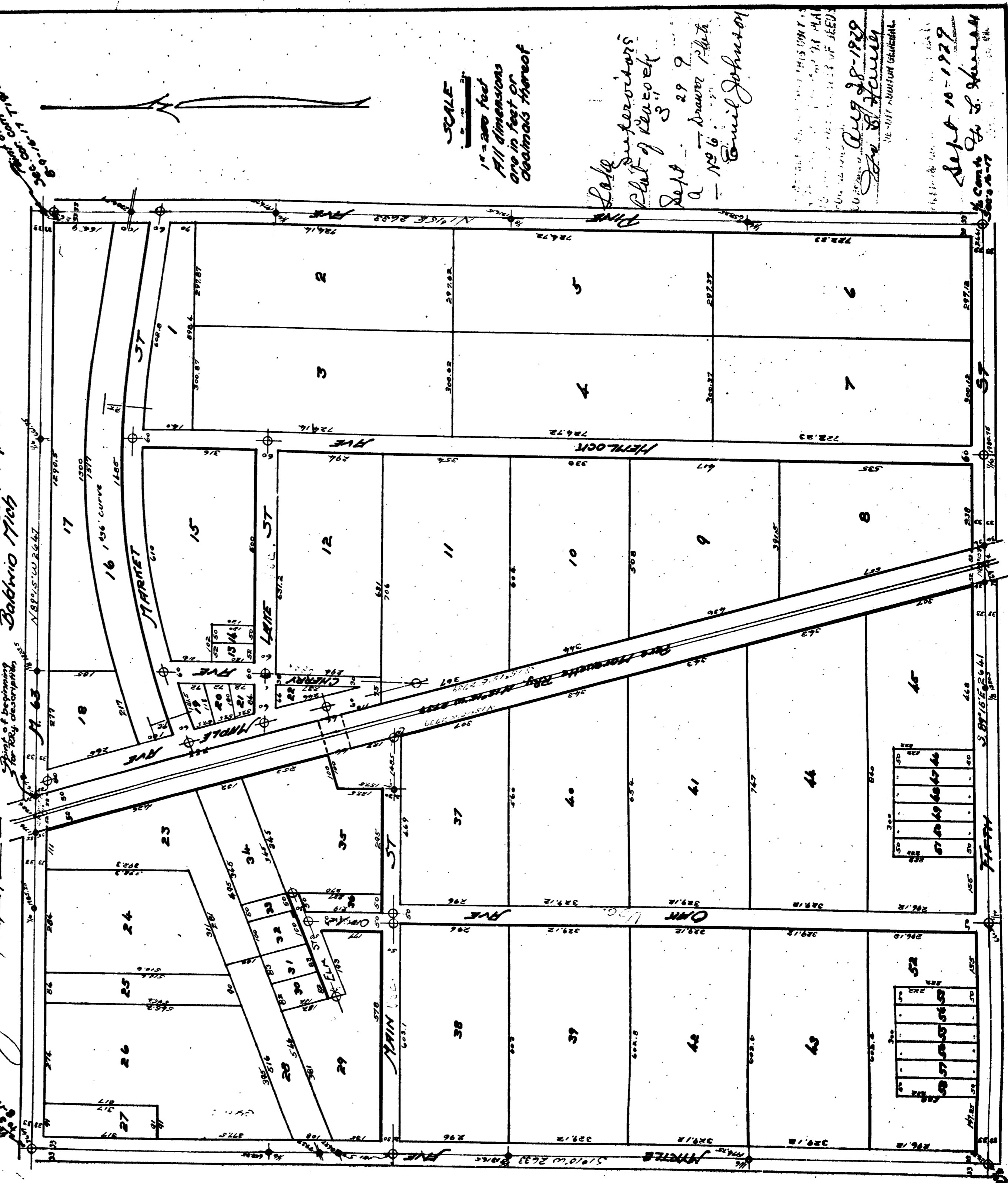
SURVEYOR'S CERTIFICATE
I hereby certify that the plat herein delineated is a correct one and that permanent metal monuments consisting of 1" iron pipe 15" long bedded in a concrete base 4"-10 diameter and 18" in length have been planted at all points marked thus (O) as thereon shown on all angles to the boundaries of the land platted, intersection of streets and intersection of alleys and streets with the boundaries of the land platted as shown on said plat.

Harry Basklett
Supervisor of Michigan, County of Peacock
Signed and sealed in presence of:
Emil Johnson
Treasurer
L. M. Basklett
County Clerk
This plat was approved on the 2 day of August 1929
Resurveyed and Platted July 1929
Geo. H. Johnson, Reqsur.
Babwio Nib

Municipal
This plat was approved by the township board of Peacock at a meeting held on the 2 day of Aug. 1929
Emil Johnson Township Clerk
Emil Johnson County Treasurer
Emil Johnson County Clerk

CERTIFICATES OF APPROVAL
County Board
This plat was approved on the 2 day of August 1929
Emil Johnson Township Clerk
Emil Johnson County Treasurer
Emil Johnson County Clerk

Resurveyed and Platted July 1929
Geo. H. Johnson, Reqsur.
Babwio Nib



SCALE
1" = 200 feet
All dimensions are in feet or decimals thereof
Lake Superior's
Plat of Peacock
Sept 29 9
- Drawn Plat.
Emil Johnson

Aug 28-1929
Geo. H. Hanson
Emil Johnson
Sept 10-1929
Geo. H. Hanson