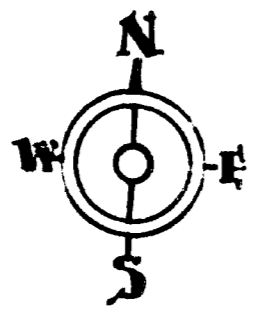


COPY

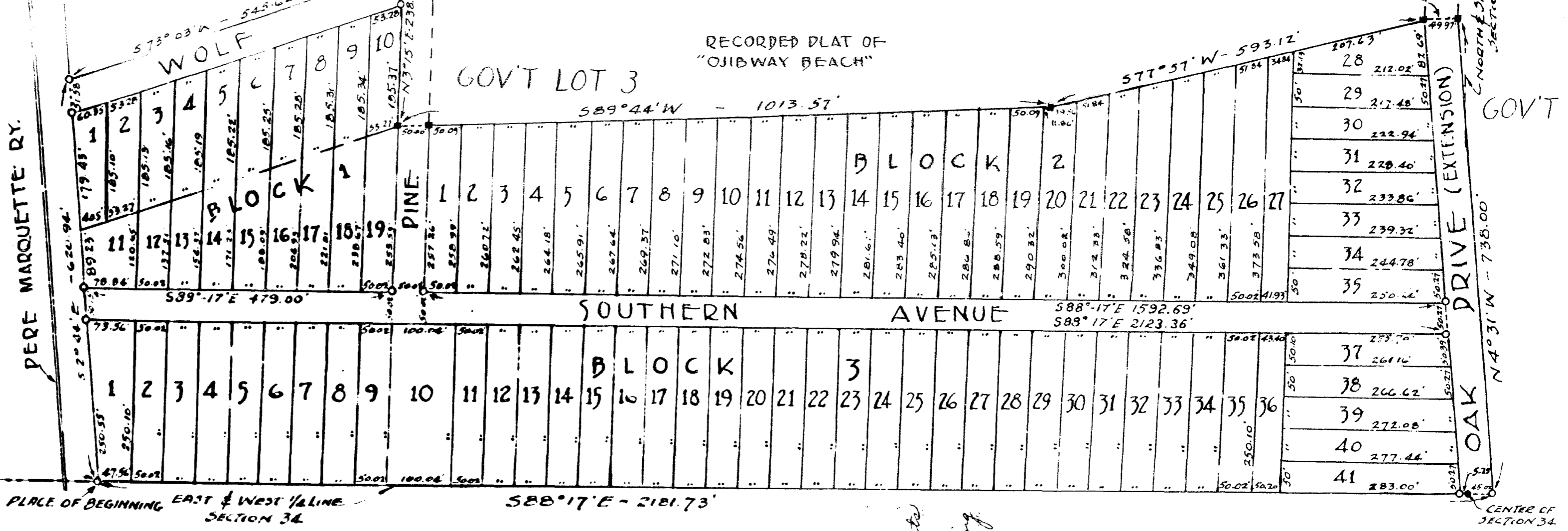
"OJIBWAY FOREST"

BEING A SUBDIVISION OF A PART OF GOVERNMENT LOTS 2 & 3, IN THE NORTH HALF OF SECTION 34, TOWNSHIP 19 NORTH, RANGE 13 WEST, PEACOCK TOWNSHIP, LAKE COUNTY, MICHIGAN

ALL DIMENSIONS ARE SHOWN IN FEET AND DECIMALS THEREOF.



SCALE: 1-INCH = 150 FEET



DEDICATION

KNOW ALL MEN BY THESE PRESENTS, that we Beach Realty Co

Michigan corporation by John W. Bell President, and M. V. Devery Secretary, as proprietor, have caused the land embraced in the annexed plat to be surveyed, laid out and platted to be known as "Ojibway Forest", being a part of Government Lots 2 and 3 in the North Half of Section 34, T 19N. R 13W., Peacock Twp., Lake County, Michigan and that the streets and alleys as shown on said plat are hereby dedicated to the use of the public.

Signed and Sealed in the Presence of:
G. W. Swigart (Witness)
A. Haley (Witness)
John W. Bell JOHN W. BELL, President
M. V. Devery M. V. DEVERY, Secretary

ACKNOWLEDGMENT

STATE OF Illinois)
County of Cook) ss.
On this 19th day of February, A.D. 1946, before me, G. W. Swigart, a Notary Public in and for said county appeared John W. Bell and M. V. Devery President and Secretary respectively of the Beach Realty Co Michigan corporation, and that the seal affixed to said instrument is the corporate seal of said corporation and that said instrument was signed and sealed in behalf of said corporation by authority of its Board of Directors and the said John W. Bell and M. V. Devery acknowledged said instrument to be the free act and deed of said corporation.
G. W. Swigart G. W. SWIGART, Notary Public, Cook County
My Commission expires Aug 1st 1950

DESCRIPTION OF LAND PLATTED

The land embraced in the annexed plat of "Ojibway Forest" being a part of Government Lots 2 and 3 in the North Half of Section 34, T 19N. R 13W., Peacock Twp., Lake County, Michigan is described as follows:
Beginning at a point on the East and West Quarter line and S 88° - 17' E 510.08 ft. from the West 1/4 Corner of said Section 34 and running S 88° - 17' E 2181.73 ft., thence N 4° - 31' W 738.00 ft., thence S 89° - 41' W 49.97 ft., thence S 77° - 57' W 593.12 ft., thence S 89° - 44' W 1013.57 ft., thence N 3° - 15' E 238.67 ft., thence S 73° - 03' W 545.62 ft., thence S 2° - 44' E 620.94 ft. to the point of beginning.

SURVEYOR'S CERTIFICATE

I hereby certify that the plat hereon delineated is a correct one and that permanent metal monuments consisting of bars not less than one-half inch in diameter and 48 inches in length, or shorter bars of not less than one-half inch in diameter lapped over each other at least 6 inches with an over-all length of not less than 48 inches, enclosed in a concrete cylinder at least 4 inches in diameter and 48 inches in depth have been placed at points marked thus (O) as thereon shown at all angles in the boundaries of the land platted, at all the intersections of streets, intersections of alleys, or of streets and alleys, and at the intersections of streets and alleys with the boundaries of the plat as shown on said plat.
A. Lester Drago A LESTER DRAGO, Registered Land Surveyor (of Professional Engineer)

APPROVAL BY BOARD OF COUNTY ROAD COMMISSIONERS

This plat has been examined and was approved on the 18th day of February, 1946, by the Board County Board of Road Commissioners.
Nelson E. Wick NELSON E. WICKS (Chairman)
Alfred Kinney ALFRED KINNEY (Member)
John DeGreen JOHN DEGREEN (Member)

MUNICIPAL APPROVAL

This plat was approved by the Township Board of the Township of Peacock at a meeting held Jan 12, 1946.
Myrtle L. Moore MYRTLE MOORE (Clerk)

APPROVAL BY COUNTY BOARD

This plat was approved on the 20th day of December, 1946.
Mary A. Houston MARY A. HOUSTON (County Register of Deeds)
Mary A. Houston MARY A. HOUSTON (County Clerk)
Forest C. Coles FOREST C. COLES (County Treasurer)

COUNTY TREASURER'S CERTIFICATE

Office of County Treasurer, Lake County.
I hereby certify, that there are no tax liens or titles held by the State on the lands described hereon, and that there are no tax liens or titles held by individuals on said lands, for the five years preceding the 20th day of December, 1946 and that the taxes for said period of five years are all paid, as shown by the records of this office, except
This certificate does not apply to taxes, if any, now in process of collection by township, city or village collecting officers.
Forest C. Coles FOREST C. COLES (County Treasurer)

30125