

PLAT OF NORTHLAND TRAIL

Part of NE 1/4 of SW 1/4 of NE 1/4 of Sec 22 T17N/R13W PLEASANT PLAINS TWP LAKE COUNTY, MICH.

Copy Plat in 1 sheet

KNOW ALL MEN BY THESE PRESENTS: That we J. J. MURDICK as proprietor and GLADYS MURDICK his wife, have caused the land embraced in the annexed plat to be surveyed, laid out and platted to be known as Northland Trail, and that the streets and alleys as shown on said plat are hereby dedicated to the use of the public, except that street known as Northland Trail, which is dedicated to the use of lot owners only.

Signed and Sealed in presence of
Laura Bromley }
Ray Trucks }
RAY TRUCKS }
GLADYS MURDICK (L.S.)
J. J. MURDICK (L.S.)

STATE OF MICHIGAN }
County of LAKE } ss.
On this 31st day of DECEMBER 1940 before me a Notary Public in and for said county, personally came the above named, J. J. MURDICK and GLADYS MURDICK his wife known to me to be the persons who executed the above dedication, and acknowledged the same to be their free act and deed.
My Commission expires 8-15-1941 Ray Trucks Notary Public LAKE Co, Mich.

SURVEYOR'S CERTIFICATE

I hereby certify that the plat hereon delineated is a correct one and that permanent metal monuments consisting of bars not less than one-half inch in diameter and 48 inches in length, or shorter bars of not less than one-half inch in diameter and 48 inches over each other at least 6 inches with an over-all length of not less than 48 inches engaged in a concrete cylinder at least 4 inches in diameter and 48 inches in depth have been placed at all points marked thus (O) as hereon shown of all intersections of the boundaries of the land platted, at all the intersections of streets, streets and alleys or of streets and alleys, and at the intersections of streets, streets and alleys with the boundaries of the land platted as shown on said plat.

W. B. WILLIAMS
Reg. Land Surveyor

DESCRIPTION OF LAND PLATTED

The land embraced in the annexed plat of Northland Trail, part of NE 1/4 of SW 1/4 of NE 1/4 of Sec. 22, T17N/R13W, Pleasant Plains Twp, Lake County Mich. is described as follows:
Beginning of a point N 1°47'05"W, 1261.68' on NE 1/4 line from C 1/2 post of said Sec. 22 to NE 1/4 post on said NE 1/4 line and N 88°50'40"E 73.93' to point of beginning. Said pt. of beg. being 75' from E of State Highway M37. Thence N 88°50'40"E 75.92' to NE 1/4 line to C 1/2 post of NE 1/4 of said Sec 22. Thence S 1°01'50"E 472.35' on E 1/2 line, thence N 89°39'35"W 1287.56' to a point 25.05' from E of State Highway M37 (also said point being 25.53' from NE 1/4 E line of said Sec. 22.) Thence N 1°44'W parallel to E of State Highway M37, 438.63' to point of beginning.

CERTIFICATE OF APPROVAL by BOARD of COUNTY ROAD COMMISSIONERS
This plat has been examined and was approved on the 20th day of January 1944 by the Lake County Board of Road Commissioners.

W. B. WILLIAMS Chairman
W. B. WILLIAMS Member
W. B. WILLIAMS Member
JANOR OF GREEN Member

CERTIFICATE OF MUNICIPAL APPROVAL
This plat was approved by the Township Board of the Township of Pleasant Plains at a meeting held January 13th 1944

CERTIFICATE OF APPROVAL by COUNTY BOARD
This plat was approved on the 21st day of January 1944

W. B. WILLIAMS County Clerk
W. B. WILLIAMS County Clerk
W. B. WILLIAMS County Clerk

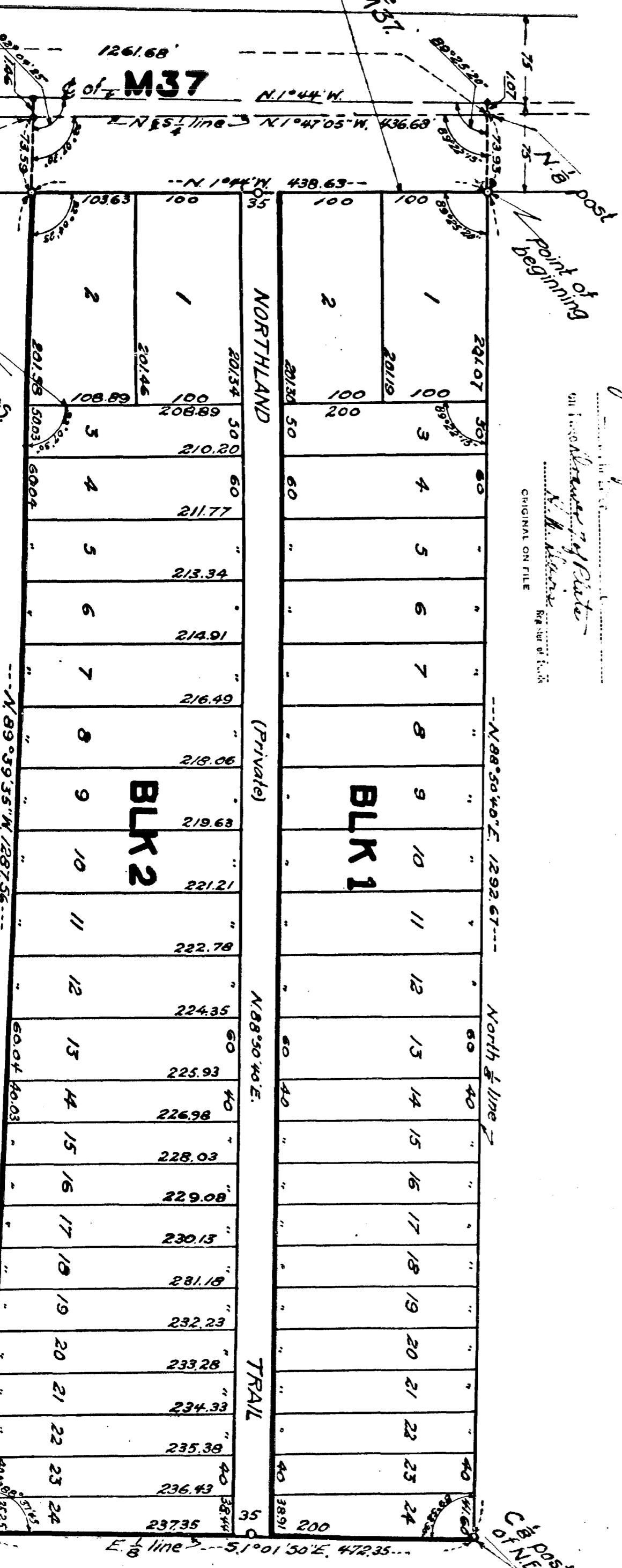
CERTIFICATE as to STATE TRUNK LINE or FEDERAL AID ROADS
We hereby certify that said plat appears to include land located on a state trunk line or federal aid road.

W. B. WILLIAMS County Road Board
W. B. WILLIAMS County Road Board
W. B. WILLIAMS County Road Board

COUNTY TREASURER'S CERTIFICATE RELATING TO TAXES

Office of County Treasurer: Lake County.
I hereby certify that there are no tax liens or titles held by the State on the land described hereon, and that there are no tax liens or titles held by individuals on said lands for the five years preceding the 15th day of January 1944 and that the taxes for said period of five years are paid as shown by the records of this office.
This certificate does not include taxes, if any, in process of collection by township, city or village collecting officers.

W. B. WILLIAMS County Treasurer



Findings that width and location of State Trunk Line and Federal Aid Road conform to plans on file. I hereby approve this plat.
W. B. WILLIAMS
State Highway Commission

Recorded in the County Clerk's Office of Lake County, Michigan, on the 23rd day of January 1944.
W. B. WILLIAMS
County Clerk