

"LITTLE SOUTH RIVER ACRES"

BEING THE N.E. 1/4, PART OF THE N.W. 1/4 AND PART OF THE S.E. 1/4 SECTION 27, T17N, R13W, PLEASANT PLAINS TOWNSHIP LAKE COUNTY, MICHIGAN

DEDICATION

KNOW ALL MEN BY THESE PRESENTS: That we, Ray Trucks as proprietor, and Lenene M. Trucks, his wife, have caused the land embraced in the annexed plat to be surveyed, laid out and platted, to be known as "Little South River Acres", being the N.E. 1/4, part of the N.W. 1/4 and part of the S.E. 1/4, Section 27, T17N, R13W, Pleasant Plains Township, Lake County, Michigan, and that the streets and walks as shown on said plat are hereby dedicated to the use of the public.

Signed and Sealed in presence of

Ray Trucks (LS)
Lenene M. Trucks (LS)
Ray Trucks
Lenene M. Trucks

State of Michigan) ss
County of Lake

On this 24 day of September 1940 before me a Notary Public in and for said county, personally came the above named Ray Trucks, and Lenene M. Trucks, his wife, known to me to be the persons who executed the above dedication and acknowledged the same to be their free act and deed.

My Commission expires May 14, 1941
Notary Public, Lake County, Michigan.
Walter P. Seibel
Walter P. Seibel
Notary Public

SURVEYORS CERTIFICATE

I hereby certify that the plat hereon delineated is a correct one and that permanent metal monuments consisting of bars not less than one-half inch in diameter and 48 inches in length, encased in a concrete cylinder at least 4 inches in diameter and 48 inches in depth have been placed at points marked thus (o) as thereon shown, at all angles in the boundaries of the land platted, at all the intersections of streets, intersections of walks, or intersections of streets and walks, and at the intersections of streets and walks with the boundaries of the plat as shown on said plat. Also, 1 inch angle iron 5 feet long have been placed at all lot corners throughout said plat, and also at points marked thus (*) as thereon shown.

Walter S. Szyfero
Walter S. Szyfero
Registered Land Surveyor

CERTIFICATE OF MUNICIPAL APPROVAL

This plat was approved by the township board of the Township of Pleasant Plains at a meeting held on September 28, 1940

Harold V. Fisher
Harold V. Fisher
Clerk.

CERTIFICATE OF APPROVAL OF COUNTY BOARD

This plat was approved on the 26th day of September 1940

Andrew Algquist
Andrew Algquist
Judge of Probate
Murray Urban
County Clerk
George W. Bradford
George W. Bradford
County Treasurer.

CERTIFICATE OF APPROVAL BY BOARD OF COUNTY ROAD COMMISSIONERS

This plat has been examined and was approved on the 26th day of September 1940

Thomas O. Squire
Thomas O. Squire
Chairman
W. E. Wickes
W. E. Wickes
Member
Opal S. Lee
Opal S. Lee
Member.

Finding that width and location of State Trunk Line and Plat of Roads conform to plans on file, I hereby approve this plat.
Zimney K. W. Wray
Zimney K. W. Wray
Murray Urban
State Highway Commissioner

Examined and Approved

Walter P. Seibel
Walter P. Seibel
Notary Public
Notary Public

HEREBY CERTIFY THAT THIS COPY IS A TRUE COPY OF THE ORIGINAL THAT FORWARDED THE REGISTER OF DEEDS FOR RECORDING.

PREPARED October 24, 1940
Walter P. Seibel
Walter P. Seibel
Notary Public
Notary Public

CCPY
Part of Little South River
Pleasant Plains Township
Map of Little South River
Pleasant Plains Township
No. 40 of 200 sheets
Date October 24, 1940
on Page 25th
W. M. Larson
W. M. Larson
Register of Deeds
ORIGINAL ON FILE

FILED IN SECTION COMMISSIONS FILE
November 19, 1940
Walter P. Seibel
Walter P. Seibel
Notary Public
Notary Public
Little South River Acres
Plat in 2 Sheets
Sheet 1

COUNTY TREASURERS CERTIFICATE

Office of the County Treasurer, Lake County.
I hereby certify that there are no tax liens or titles held by the State on the lands described hereon, and that there are no tax liens or titles held by individuals on said lands, for the five years preceding the 27th day of September 1940 and that the taxes for said period of five years are all paid, as shown by the records of this office.

This certificate does not apply to taxes, if any, now in process of collection by township collecting officers.

George W. Bradford
George W. Bradford
County Treasurer.

DESCRIPTION OF LAND PLATTED

The land embraced in the annexed plat of "Little South River Acres", being the N.E. 1/4, part of the N.W. 1/4 and part of the S.E. 1/4, Section 27, T17N, R13W, Pleasant Plains Township, Lake County Michigan, is described as follows: Commencing at the N.E. corner of Section 27, T17N, R13W; thence S. 0° 11' E. 2649.89 ft. to 1/4 post; thence S. 0° 12' 12" W. 959.35 ft.; thence S. 66° 42' 30" W. 1097.9 ft.; thence N. 69° 48' 30" W. 1455.6 ft. to the center of State trunkline highway 37; thence N. 0° 54' 30" W. 1359.38 ft.; thence by 171.1 ft. radius curve to the left 518.9 ft.; thence N. 15° 58' 30" W. 257.5 ft.; thence by 1277.4 ft. radius curve to the right 579.66 ft.; thence N. 10° 00' 30" E. 290.03 ft.; thence N. 69° 58' 30" E. 1347.3 ft.; thence N. 0° 38' 30" W. 666.62 ft.; thence East 1354 ft. to place of beginning.

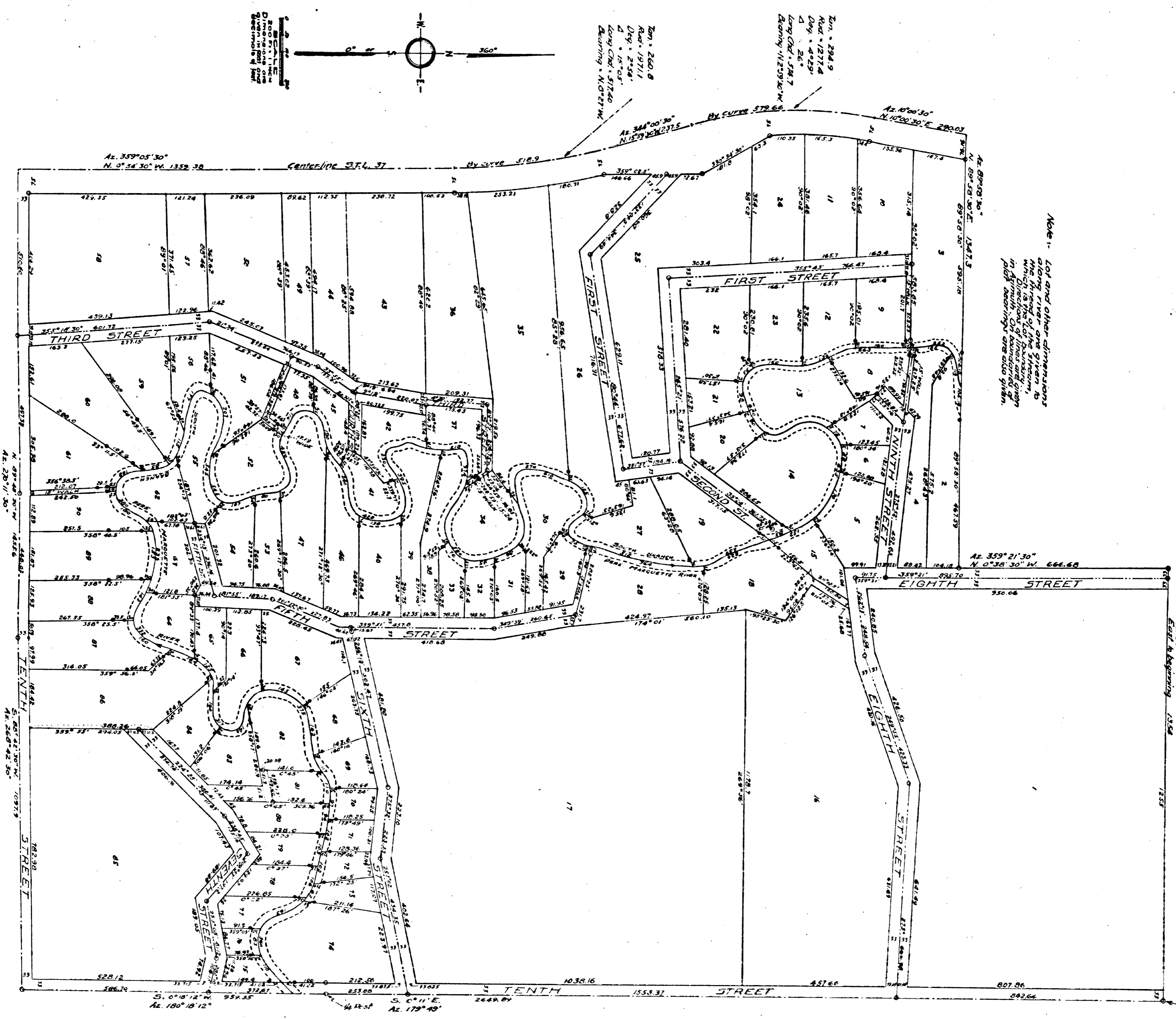
CERTIFICATE AS TO STATE TRUNK LINE ROADS

We hereby certify that said plat appears to include land located on a state trunk line road.

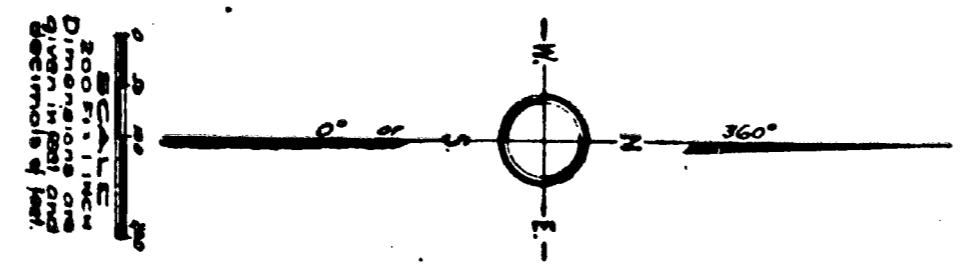
Andrew Algquist
Andrew Algquist
Notary Public
Notary Public
Walter P. Seibel
Walter P. Seibel
County Plat Board
County Plat Board
Width and location of state trunk line road OK.
State Highway Commissioner

Note - Lot and other dimensions along river are given to which of the stream, Direction of flow and given in Appendix. On boundary of plat bearings are also given.

Place of Beginning - Being the N.E. corner of Section 27 T17N R13W Madison Park Twp. Lake Co. Mich.



Little South River Acres
Plat in 2 Sheets
Sheet 2



Len. = 284.9
 Rad. = 1277.4
 Del. = 4.429
 Δ = 26°
 Long Chd. = 574.7
 Short Chd. = 142.936 W
 Bearing = N. 0° 21' W

Az. 359° 05' 30"
 N. 0° 54' 30" W. 1352.30
 Centerline S.F.L. 37
 By curve 518.9

Az. 359° 21' 30"
 N. 0° 36' 30" W. 666.60

Az. 270° 11' 30"
 N. 89° 48' 30" W. 445.6
 Az. 270° 11' 30"
 N. 89° 48' 30" W. 445.6

S. 0° 10' 12" E. 552.35
 S. 0° 11' E. 2642.64
 Az. 179° 49'