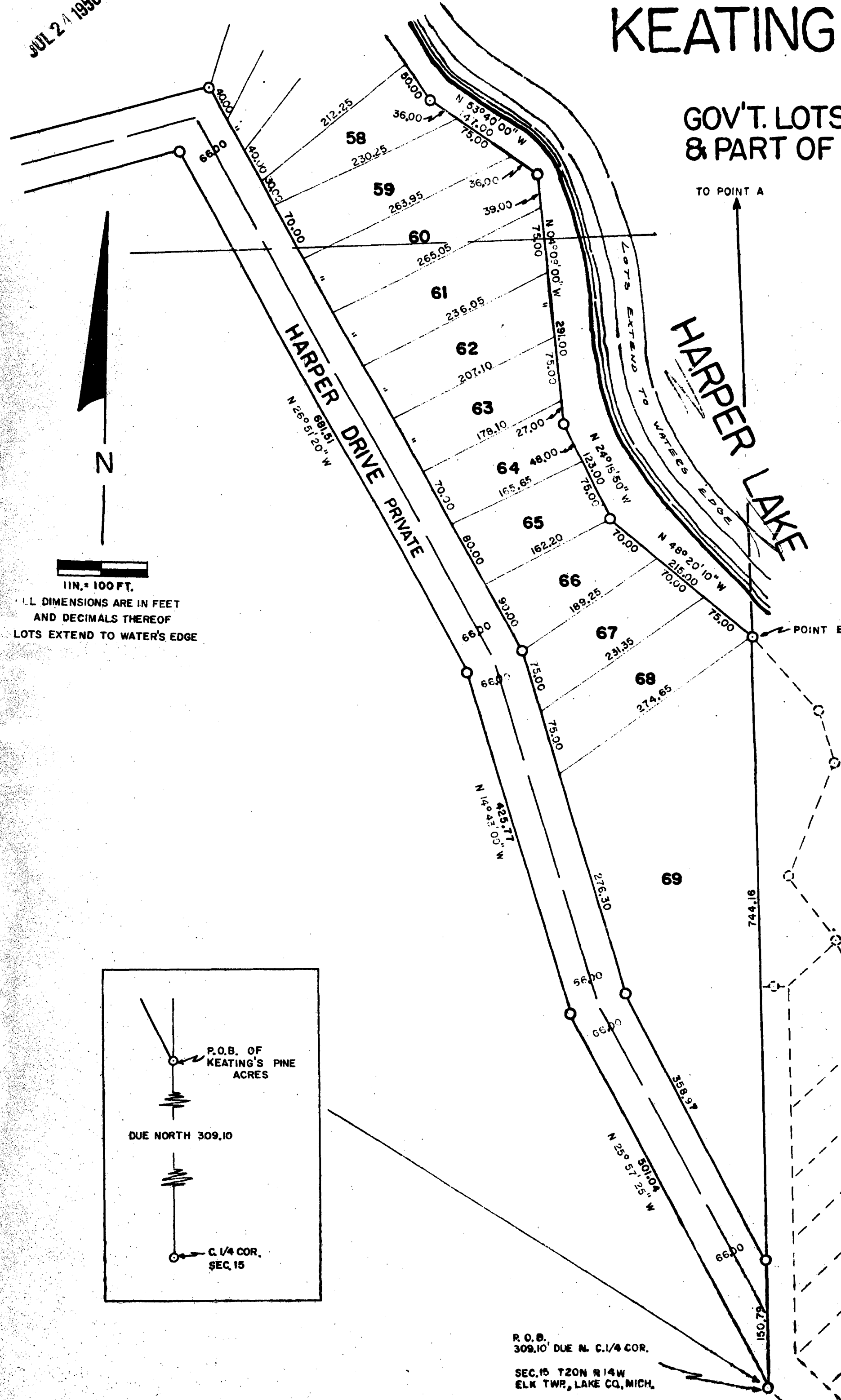


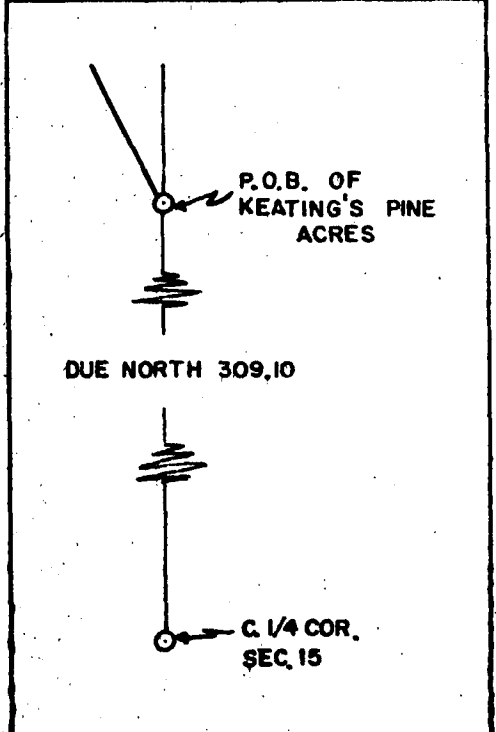
KEATING'S PINE ACRES

PART OF
GOV'T. LOTS 4 & 5, SEC. 10, T 20 N, R 14 W
& PART OF W. 1/2 SEC. 15, T 20 N, R 14 W
ELK TWP.
LAKE CO., MICH.

JUL 24 1956



1 IN. = 100 FT.
ALL DIMENSIONS ARE IN FEET
AND DECIMALS THEREOF
LOTS EXTEND TO WATER'S EDGE



P.O.B.
309.10' DUE N. C. 1/4 COR.
SEC. 15 T20N R14W
ELK TWP., LAKE CO., MICH.

DEDICATION

Know all men by these presents, that I, Laura M. Keating as proprietor, have caused the land embraced in the annexed plat to be surveyed, laid out and platted, to be known as "KEATING'S PINE ACRES" part of government lots 4 & 5, section 10, T20N R14W and part of the W 1/2 section 15, T20N R14W, Elk Twp. Lake County, Michigan, and that the county road #669 as shown on said plat is dedicated to the use of the public, and that Harper Drive and walks as shown are private and dedicated to the use of the lot owners only.

Signed and Sealed in the Presence of:

D. S. Hartzell)
D.S. HARTZELL) Laura M. Keating
Robert A. Griffitt)
ROBERT A. GRIFFITT) Laura M. Keating

STATE OF MICHIGAN

COUNTY OF LAKE } S.S.
On this 14th day of June 1956 before me, a Notary Public in and for said county, personally came the above Laura M. Keating, known to me to be the person who executed the above dedication, and acknowledged the same to be her free act and deed.

George Blase
GEORGE BLASE, Notary Public
LAKE Co. Michigan

My commission expires DEC. 27 1958

DESCRIPTION

The land embraced in the annexed plat of "KEATING'S PINE ACRES", part of Gov't. Lots 4 & 5, Sec. 10, T20N R14W and part of W 1/2 Sec. 15, T20N R14W, Elk Twp., Lake Co., Mich. is described as follows: Beginning at a point that is due North of the C. 1/4 cor. of said Sec. 15 309.10', Thence N 25° 57' 25" W 501.04', Thence N 14° 43' 00" W 425.77', Thence N 26° 51' 20" W 681.51', Thence S 76° 10' 40" W 484.55', Thence N 27° 02' 40" W 887.68', Thence on a curve to the left, said curve having a length of 242.79', long chord 235.90', radius 293.89', long chord bearing of N 50° 42' 40" W, Thence N 73° 03' 40" W 66.00', Thence on a curve to the left, said curve having a length of 389.65', long chord 388.41', radius 1399.69', long chord bearing of N 08° 57' 50" E, Thence N 00° 59' 20" E 251.44', Thence on a curve to the right, said curve having a length of 959.02', long chord 895.59', radius 749.78', long chord bearing of N 37° 39' 40" E, Thence N 74° 20' 00" E 186.00', Thence S 15° 40' 00" E 66.00', Thence on a curve to the left, said curve having a length of 256.82', long chord 239.29', radius 198.58', long chord bearing of S 52° 43' 00" E, Thence S 89° 46' 00" E 756.03', Thence 3495.56' due south to the point of beginning.

SURVEYOR'S CERTIFICATE

I hereby certify that the plat hereon delineated is a correct one, and that permanent metal monuments consisting of iron bars one-half inch in diameter and 48 inches in length encased in a concrete cylinder 4 inches in diameter and 48 inches in depth have been planted at points marked thus (o).

George Blase
George Blase, R.L.S. #5489

CERTIFICATE OF MUNICIPAL APPROVAL

This plat was approved by the township board of the township of Elk at a meeting held on the 16th day of June 1956.

Emily Tennant
EMILY TENNANT, Clerk

COUNTY TREASURER'S CERTIFICATE RELATING TO TAXES

Office of the County Treasurer, Lake County, Mich. I hereby certify that there are no tax liens or titles held by the State on the lands described hereon, or that there are no tax liens or titles held by individuals on said lands for the five (5) years preceding the 6 day of July 1956 and that the taxes for said period of five (5) years are paid, as shown by records of this office. This certificate does not apply to taxes, if any, now in the process of collection by township or county collection officers.

Forest C. Coles
Forest C. Coles, County Treas.

CERTIFICATE OF APPROVAL BY BOARD OF COUNTY ROAD COMMISSIONERS

This plat has been examined and was approved on the 17 day of June 1956 by the Lake County Board of Road Commissioners.

R. E. Vicks
R. E. Vicks, Chairman
Alfred Kinney
Alfred Kinney, Member
Albert Berzley
Albert Berzley, Member

CERTIFICATE OF APPROVAL BY COUNTY BOARD

This plat was approved on the 23rd day of July 1956 by the Lake County Plat Board.

John S. Wilder
John S. Wilder, Chairman,
Board of Supervisors
Forest C. Coles
Forest C. Coles, County Treas.

COPY

Register's Office }
Lake County, } S.S.
Plat of Keating's Pine Acres
was Recorded this 27th day of July A.D., 1956 at 2 o'clock P.M., in Liber drawn of plats on Page 7418
Walter V. Utter
Walter V. Utter, Register of Deeds
ORIGINAL ON FILE

I hereby certify this copy is a true copy of map or plat recorded in the Register of Deeds for recording.

Date July 24, 1956
FILED IN AUDITOR GENERAL'S DEPT.

Date July 31, 1956
EXAMINED AND APPROVED

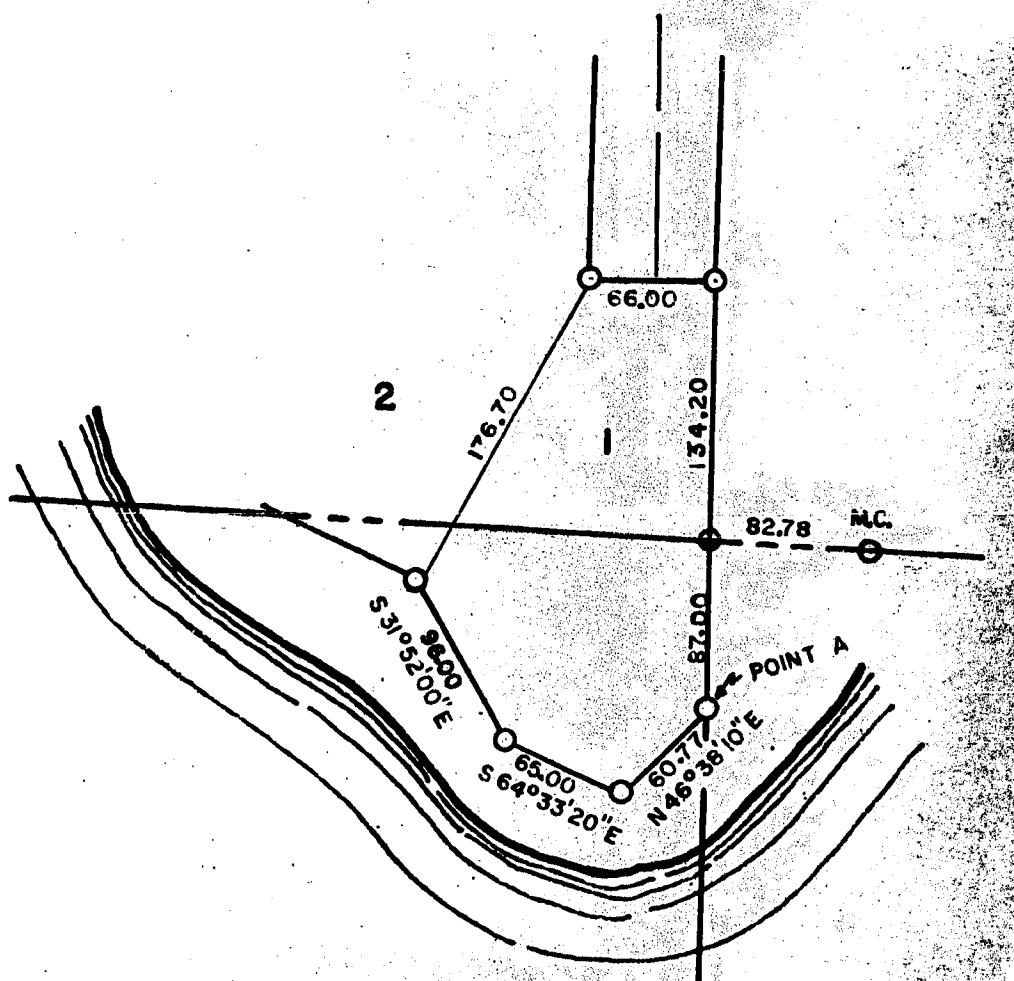
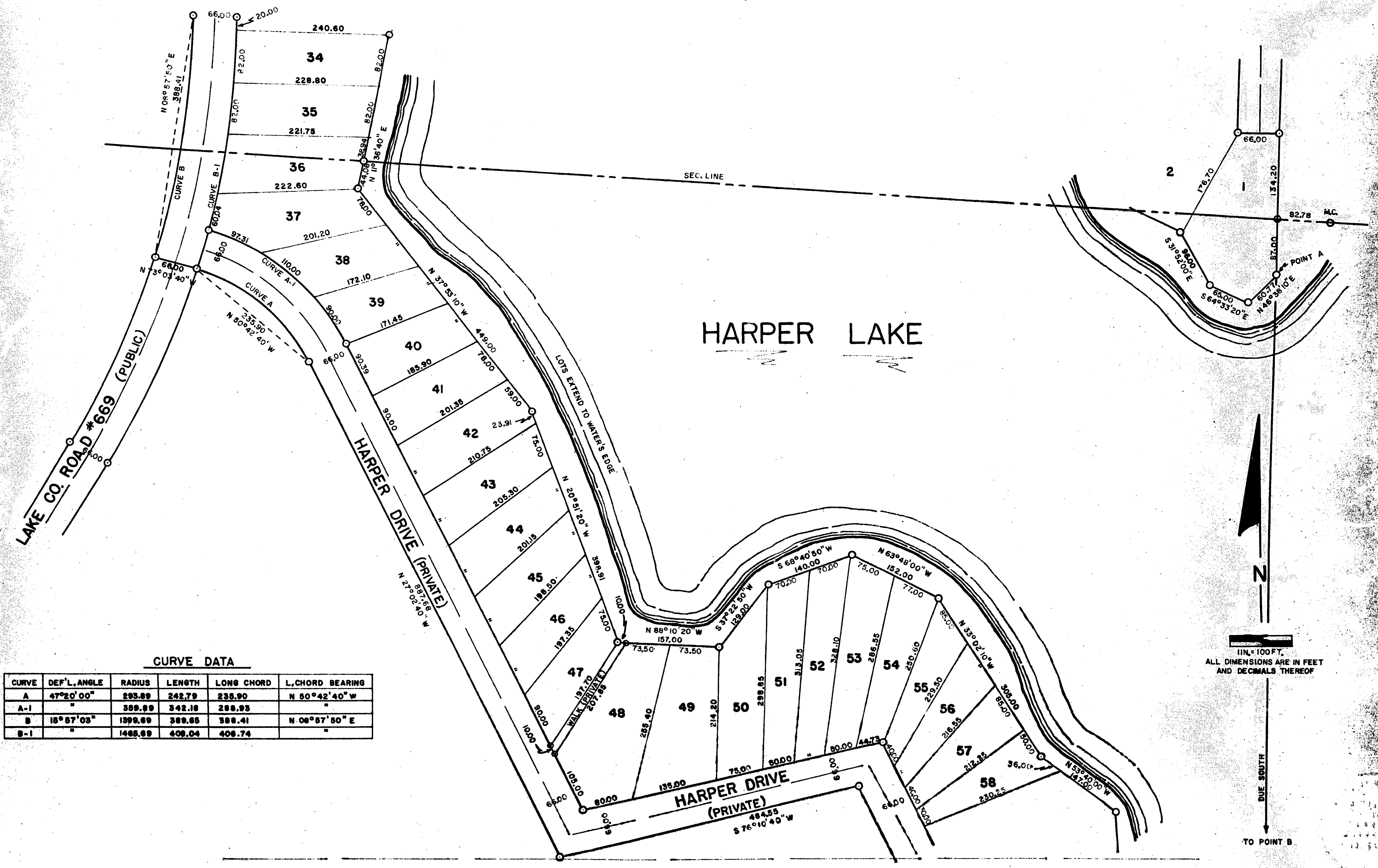
Date July 24, 1956

Donald R. Givens
Donald R. Givens, Auditor General
By D. D. MacElroy
D. D. MacElroy, Plat Engineer

JUL 24 1958

KEATING'S PINE ACRES

PART OF
GOV'T. LOTS 4 & 5, SEC. 10, T20 N, R14 W
& PART OF W. 1/2 SEC. 15, T20 N, R 14 W
ELK TWP.
LAKE CO., MICH.



CURVE DATA

CURVE	DEF'L. ANGLE	RADIUS	LENGTH	LONG CHORD	L. CHORD BEARING
A	47°20'00"	293.89	242.79	238.90	N 50°42'40" W
A-1	"	359.99	342.18	288.93	"
B	18°57'03"	1399.69	388.85	388.41	N 08°57'50" E
B-1	"	1488.69	408.04	408.74	"

1 IN. = 100 FT.
ALL DIMENSIONS ARE IN FEET
AND DECIMALS THEREOF

DUE SOUTH
TO POINT B

10718

JUL 24 1956

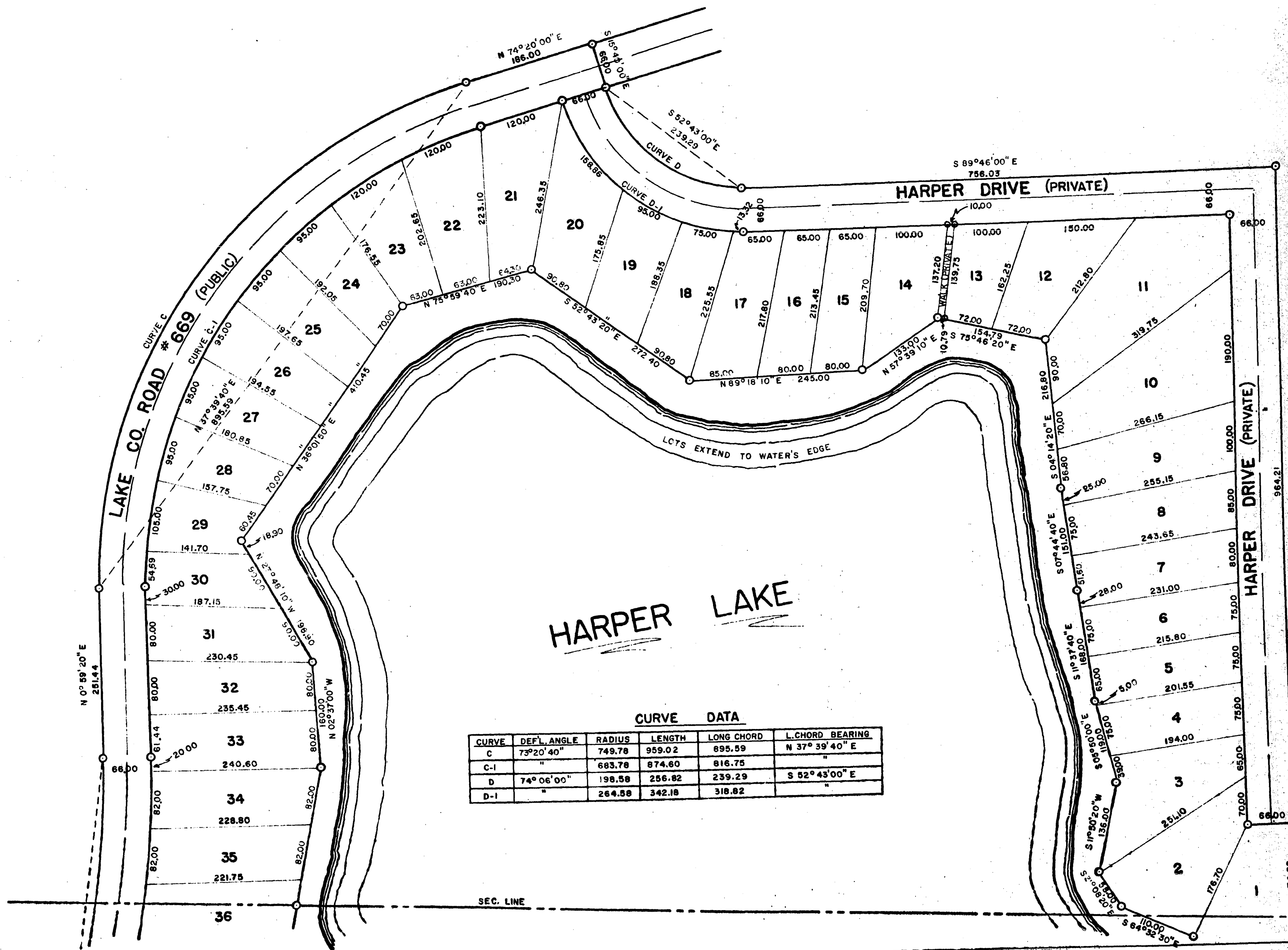
KEATING'S PINE ACRES

PART OF
GOV'T. LOTS 4&5, SEC. 10, T 20 N, R 14 W
& PART OF W. 1/2 SEC. 15, T 20 N, R 14 W

ELK TWP
LAKE CO., MICH.



1"=100 FT.
ALL DIMENSIONS ARE IN FEET AND DECIMALS THEREOF



HARPER LAKE

CURVE DATA

CURVE	DEF. ANGLE	RADIUS	LENGTH	LONG CHORD	L. CHORD BEARING
C	73°20'40"	749.78	959.02	895.59	N 37°39'40" E
C-I	"	683.78	874.60	816.75	"
D	74°06'00"	198.58	256.82	239.29	S 52°43'00" E
D-I	"	264.58	342.18	318.82	"

3495.56 DUE SOUTH TO P.O.B.

20196