

# 'SUPERVISORS PLAT OF HARVE CAMP' LAKE COUNTY MICHIGAN

Plat in 2 Sheets  
Sheet No. 1  
- Copy -

### DEDICATION+

Know ALL MEN By THESE PRESENTS, That I, John E. Widen, Supervisor, of the Township of Pleasant Plains, T17N.R13W. Lake County Mich. by virtue of authority in me vested by Sec. 51 Act 172 of 1929, having been duly authorized by the township board, have caused the land described in the annexed plat to be surveyed, laid out and platted to be known as "Supervisors Plat of HARVE CAMP" S. 1/2 of SE 1/4 Sec. 16 T17N.R13W Lake County Michigan, and that the streets, alleys and parts as shown on said plat are hereby dedicated to the use of the public.

Supervisor of the Township of Pleasant Plains (SEA)  
Witnesses  
T17N.R13W.

STATE OF MICHIGAN ss.

On this 22<sup>nd</sup> day of APRIL, AD. 1935, before me, a notary public, in and for said county, personally came the above named JOHN E. WIDEN, of Lake County Michigan known to me to be the person who executed the above dedication and acknowledged the same to be his free act and deed as such supervisor.

My commission expires July 19, 1935.  
Notary Public

### SURVEYOR'S CERTIFICATE

Thereby certify that the plat hereon delineated is a correct one and that permanent mental monuments of not less than one inch in diameter and fifteen inches in length set in a concrete base at least four inches in diameter and forty-eight inches in depth have been planted at points marked thus (O) as thereon shown of all intersections of streets, of alleys or of streets and alleys and of the intersections of streets and alleys with the boundaries of the plat as shown on said plat.

Notary Public

### DESCRIPTION of Land Platted

The land embraced in the annexed plat of "Supervisors Plat of HARVE CAMP" S. 1/2 of SE 1/4 Sec. 16 T17N.R13W, Lake County Mich. is described as follows: Beginning at the Section corner common to Sections 15, 16, 21 and 22 T17N.R13W, Thence N. 0° 30' W. 1297', thence N. 88° 30' W. 2611', thence S. 0° 35' W. 1300', thence S. 88° 35' E. 2641' to place of beginning.

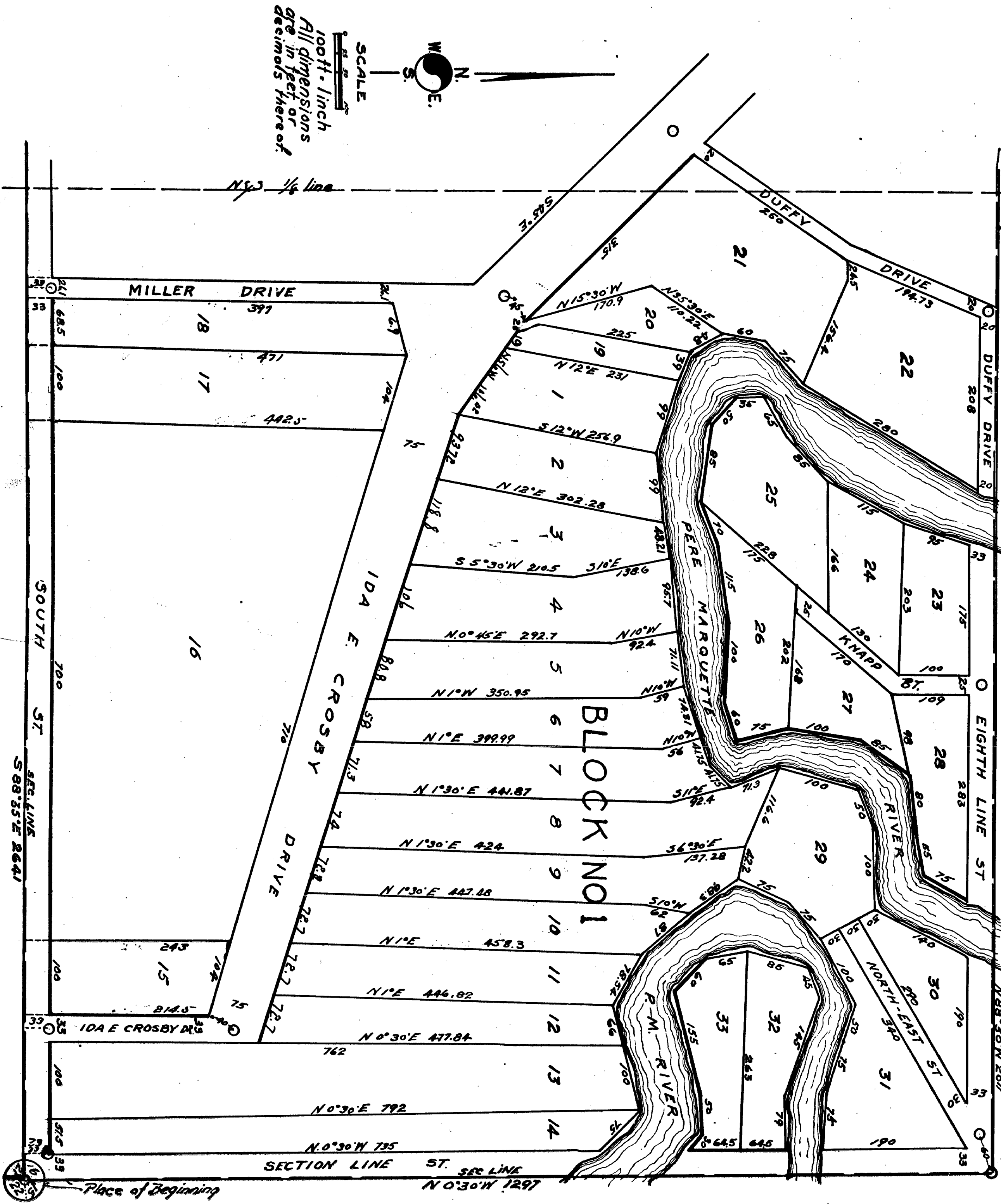
### CERTIFICATES of Approval

MUNICIPAL: This plat was approved by the township board of the township of Pleasant Plains at a meeting held on the 22<sup>nd</sup> day of April 1935.

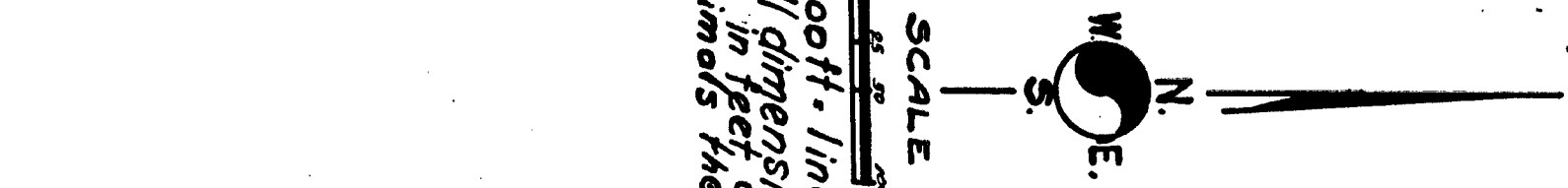
COUNTY BOARD

This plat was approved on the 22<sup>nd</sup> day of April 1935.

Andrew Algwise Probate Judge.  
T17N.R13W County Clerk  
George J. Gault County Treasurer



SCALE  
100ft. = 1inch  
All dimensions  
are in feet, or  
decimals thereof.



Place of Beginning  
SECTION LINE ST. sec. LINE  
N 0° 30' W 1297'



FRED H. AUDITOR GENERAL, S. M. A.  
*4/21/35*  
 DEPUTY AUDITOR GENERAL

I HEREBY CERTIFY THAT THIS COPY IS  
 A TRUE COPY OF THE MAP OR PLAT  
 FORWARDED THE REGISTER OF DEEDS  
 FOR RECORDING.  
*4/21/35*  
 DEPUTY AUDITOR GENERAL

Examined and Approved  
*4/21/35*  
 Deputy Auditor General

Register's Office  
 County, Mich.  
 Plat of *Harvey Camp*  
 was recorded this *26* day of  
*April* A.D. 1935 at *2* o'clock  
 M. in file *89* of 1935  
 34 Pages  
*N. M. Kelly*  
 Register of Deeds  
 ORIGINAL OFFICE

“SUPERVISORS PLAT  
 OF  
**HARVEY CAMP**”  
 S. 1/2 of S.E. 1/4 Sec. 16 T. 17 N. of R. 13 W.  
 LAKE COUNTY MICHIGAN

Plat in 2 Sheets  
 Sheet No 2  
 - Copy -

26266

