

Harper Lake Resort #3

Part of Gov't Lots 1 & 2 Sec 15 T20N R14W.
ELK TWP
LAKE CO. MICH.

SCALE
1 in = 100 ft.

All dimensions are in feet and decimals

DEDICATION
Know all men by these presents, that we Earl C. Granger as proprietor, and Zeta L. Granger his wife, have caused the land embraced in the annexed plat to be surveyed, laid out and platted, to be known as "HARPER LAKE RESORT #3", part of government lots 1 and 2, section 15, T20N R14W, ELK township, Lake county, Michigan, and that the drives and roads as shown on said plat are hereby dedicated to the use of the public.

Signed and sealed in the presence of:

George Bliss Secy
Reed D. Griffin Clerk
Earl C. Granger L.S.
Zeta L. Granger L.S.

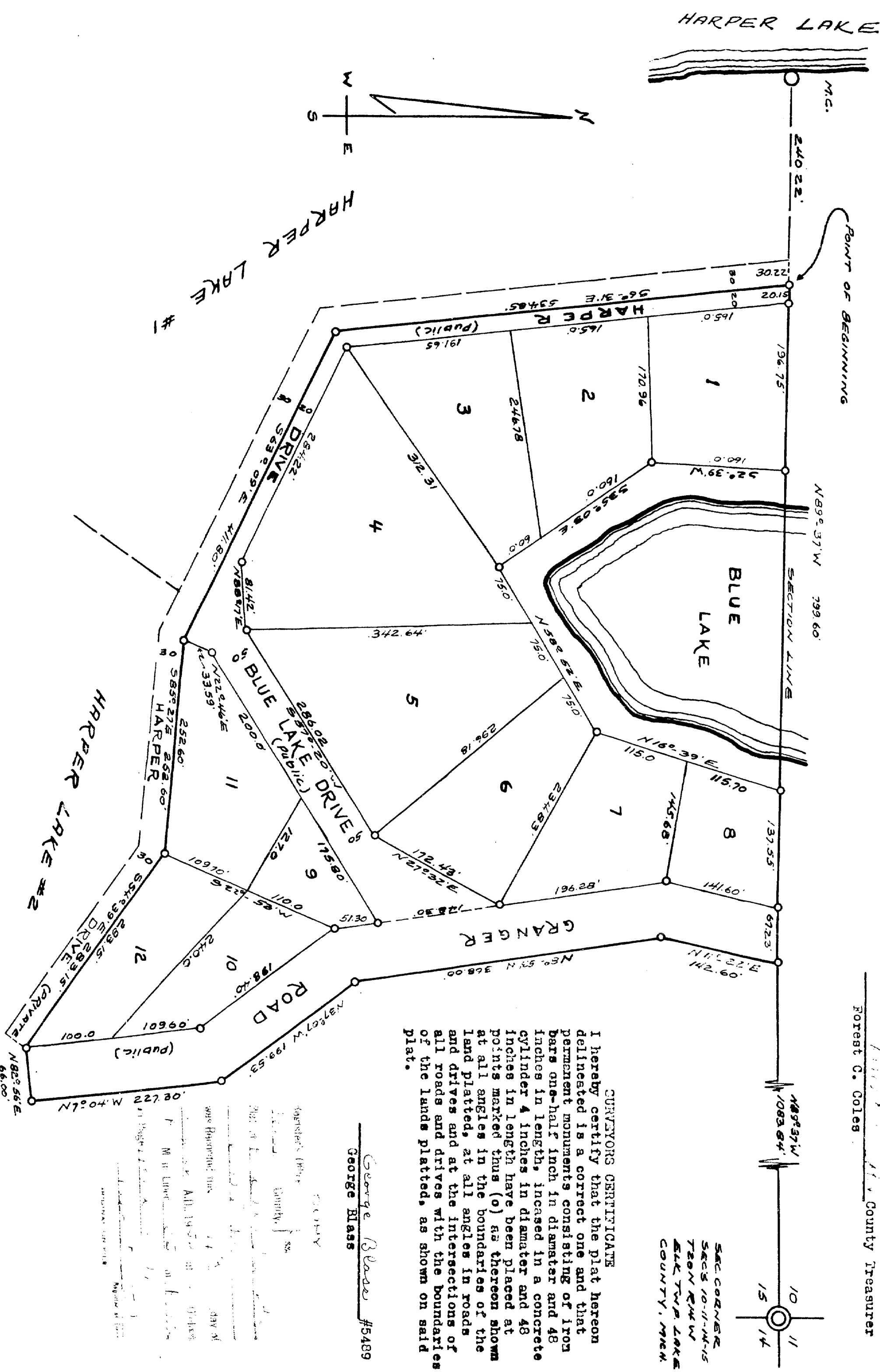
STATE OF MICHIGAN, }
COUNTY OF LAKE, } SS. On this 4th day of August 1954
before me, a notary public in and for said county, personally came the above named Earl C. Granger and Zeta L. Granger his wife, known to me to be the persons who executed the above dedication, and acknowledged the same to be their free act and deed.

My Commission expires 12-27-54
George Bliss
Notary Public, Lake Co., Mich.

DESCRIPTION
The land embraced in the annexed plat of "HARPER LAKE RESORT #3" part of Government lots 1 and 2, section 15, T20N R14W, ELK township, Lake county, Michigan, is described as follows:
Beginning at a point on the north line of said section 15, said point being S 89° 37' E 240.22 Ft. from the meander corner located at the intersection of said north line of section 15 and the east shore of Harper Lake. Said point being also W 89° 37' W 1883.44 Ft. from the northeast corner of said section 15, Thence S 6° 51' E 534.85 Ft. Thence S 63° 09' E 411.80 Ft. Thence S 85° 27' E 352.60 Ft. Thence S 54° 39' E 283.15 Ft Thence N 82° 56' E 66.00 Ft. Thence N 7° 04' W 227.30 Ft. Thence N37° 07' W 199.53 Ft. Thence W 8° 53' W 368.00 Ft. Thence W 11° 22' E 142.60 Ft. to the north line of said section 15, Thence N 89° 37' W on the north line of said section 15, 799.60 Ft. to the point of Beginning.

COUNTY TREASURERS CERTIFICATE RELATING TO TAXES
Office of the county treasurer, Lake county, Michigan. I hereby certify that there are no tax liens or titles held by the State on the lands described herein, and that there are no tax liens or titles held by individuals on said lands, for the five years preceding the day of August 1954 and that the taxes for said period of five years are paid, as shown by the records of this office.

Forest C. Coles County Treasurer



CURVEYORS CERTIFICATE
I hereby certify that the plat hereon delineated is a correct one and that permanent monuments consisting of iron bars one-half inch in diameter and 48 inches in length, incased in a concrete cylinder 4 inches in diameter and 48 inches in length have been placed at points marked thus (o) as thereon shown at all angles in the boundaries of the land platted, at all angles in roads and drives and at the interections of all roads and drives with the boundaries of the lands platted, as shown on said plat.

George Bliss #5489
George Bliss

CERTIFICATE OF MUNICIPAL APPROVAL
This plat was approved by the township board of the township of ELK at a meeting held on the 6th day of August 1954
Emily Pennington Clerk

CERTIFICATE OF APPROVAL BY COUNTY BOARD
This plat was approved on the 4th day of August 1954
by the Lake county Plat Board.
Earl C. Granger Registrar of Deeds
Earl C. Granger County Clerk
Earl C. Granger County Treasurer

CERTIFICATE OF APPROVAL BY BOARD OF COUNTY ROAD COMMISSIONERS
This plat has been examined and was approved on the Fourth day of August 1954 By the Lake county Board of Road Commissioners
Forest C. Coles Chairman

Albert Berzley Member
Albert Berzley Member
Albert Berzley Member

