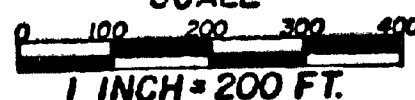


DEER TRACK PINES

PART OF N1/2 SEC. 6 T17N R13W PLEASANT PLAINS TWP.

LAKE CO., MICH.

SCALE



DESCRIPTION:

THE LAND EMBRACED IN THE ANNEXED PLAT OF "DEER TRACK PINES" PART OF THE NORTH 1/2 SEC. 6, T17N R13W, PLEASANT PLAINS TWP., LAKE COUNTY, MICHIGAN IS DESCRIBED AS BEGINNING AT THE E 1/4 COR. SEC. 6 T17N R13W, THENCE ALONG THE E. LINE OF SAID SEC. 6, N 1°27'40"E 1865.95 FEET, THENCE N82°14'50"W 1311.88 FEET, THENCE S1°10'30"W 677.99 FEET, THENCE N88°26'20"W 2449.96 FEET, THENCE S1°14'50"W 1329.79 FEET TO THE E & W 1/4 LINE, THENCE S88°26'40"E ALONG THE E & W 1/4 LINE 3744.13 FEET TO THE POINT OF BEGINNING.

PLAT CONTAINS A TOTAL OF THIRTY (30) LOTS.

COUNTY TREASURER'S CERTIFICATE RELATING TO TAXES:

OFFICE OF COUNTY TREASURER, LAKE COUNTY, MICHIGAN
 I HEREBY CERTIFY THAT THERE ARE NO TAX LIENS OR TITLES HELD BY THE STATE ON THE LANDS HEREON DESCRIBED, AND THAT THERE ARE NO TAX LIENS OR TITLES HELD BY INDIVIDUALS ON SAID LANDS, FOR THE FIVE YEARS PRECEDING THE DAY OF August 1962, AND THAT THE TAXES FOR SAID PERIOD OF FIVE YEARS ARE PAID, AS SHOWN BY THE RECORDS OF THIS OFFICE.

THIS CERTIFICATE DOES NOT APPLY TO TAXES, IF ANY, NOW IN THE PROCESS OF COLLECTION BY TOWNSHIP, OR COUNTY COLLECTING OFFICERS.

Earl Gibson
 EARL GIBSON COUNTY TREAS.

CERTIFICATE OF APPROVAL BY THE COUNTY BOARD:

THIS PLAT WAS APPROVED ON THE 14th DAY OF Sept 1962, BY THE LAKE COUNTY PLAT BOARD.

Taft V. Utter CO. CLERK
Gary Burnett GARY BURNETT CHR. BOARD SUPR.
John R. Matson JOHN R. MATSON DRAIN COMM.
Earl Gibson EARL GIBSON CO. TREAS.

CERTIFICATE OF APPROVAL BY THE COUNTY BOARD OF ROAD COMMISSIONERS:

THIS PLAT HAS BEEN EXAMINED, AND WAS APPROVED ON THE 14th DAY OF September 1962, BY THE LAKE COUNTY BOARD OF ROAD COMMISSIONERS.

N.E. Wicks N.E. WICKS CHR.
Alfred Kinney ALFRED KINNEY MEM.
Albert Berzley ALBERT BERZLEY MEM.

CERTIFICATE OF MUNICIPAL APPROVAL:

THIS PLAT WAS APPROVED BY THE TWP. BOARD OF THE TWP. OF PLEASANT PLAINS AT A MEETING HELD ON THE 31 DAY OF August 1962, AND IS IN COMPLIANCE WITH SECTION 19A AND THE WIDTH OF THE LOTS CONFORM WITH REQUIREMENTS OF SECTION 30, ACT 172, OF 1929, AS AMENDED.

Leonard C. Keller
 LEONARD C. KELLER TWP. CLERK

DEDICATION:

KNOW ALL MEN BY THESE PRESENTS, THAT WE, GREAT NORTHERN LAND & DEVELOPMENT COMPANY A MICHIGAN CORPORATION BY GERALD A. DERKS, PRESIDENT AND KENNETH E. FAUBLE, SECRETARY, AS PROPRIETOR, HAVE CAUSED THE LAND EMBRACED IN THE ANNEXED PLAT TO BE SURVEYED, LAID OUT, AND PLATTED TO BE KNOWN AS "DEER TRACK PINES", PART OF THE N1/2 SEC. 6, T17N R13W, PLEASANT PLAINS TWP., LAKE COUNTY, MICHIGAN, AND THAT THE ROADS AS SHOWN ON SAID PLAT, ARE HEREBY DEDICATED TO THE PUBLIC.

SIGNED AND SEALED IN THE PRESENCE OF:

GREAT NORTHERN LAND & DEVELOPMENT COMPANY

Mona D. Carlson
 MONA D. CARLSON

Gerald A. Derks
 GERALD A. DERKS PRESIDENT

Irene M. Mastee
 IRENE M. MASTEE

Kenneth E. Fauble
 KENNETH E. FAUBLE SECRETARY

STATE OF MICHIGAN COUNTY OF MUSKEGON } ss

ON THIS 28th DAY OF August 1962, BEFORE ME, A NOTARY PUBLIC IN AND FOR SAID COUNTY, APPEARED GERALD A. DERKS AND KENNETH E. FAUBLE TO ME PERSONALLY KNOWN, WHO BEING EACH BY ME DULY SWORN DID SAY THAT THEY ARE PRESIDENT AND SECRETARY RESPECTIVELY, OF THE GREAT NORTHERN LAND & DEVELOPMENT COMPANY, A MICHIGAN CORPORATION, AND THAT THE SEAL AFFIXED TO SAID INSTRUMENT IS THE CORPORATE SEAL OF SAID CORPORATION, AND THAT SAID INSTRUMENT WAS SIGNED AND SEALED IN BEHALF OF SAID CORPORATION BY AUTHORITY OF ITS BOARD OF DIRECTORS AND THE SAID GERALD A. DERKS AND KENNETH E. FAUBLE ACKNOWLEDGED SAID INSTRUMENT TO BE THE FREE ACT AND DEED OF SAID CORPORATION.

MY COMMISSION EXPIRES DEC. 15, 1962.

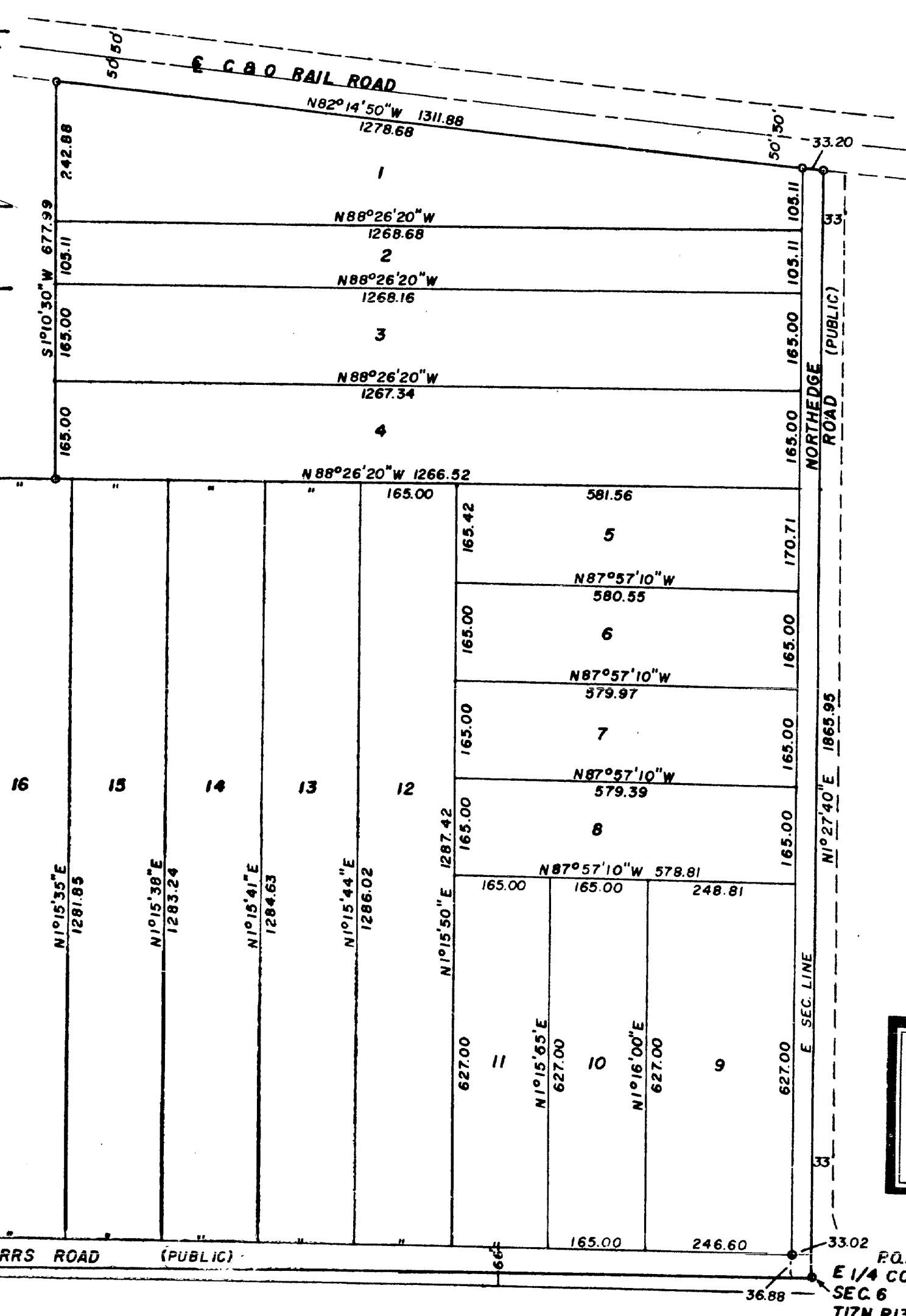
Mona D. Carlson
 MONA D. CARLSON NOTARY PUBLIC MUSKEGON CO., MICH.

SURVEYOR'S CERTIFICATE:

I HEREBY CERTIFY THAT THE PLAT HEREON DELINEATED IS A CORRECT ONE, AND THAT PERMANENT METAL MONUMENTS CONSISTING OF BARS NOT LESS THAN ONE-HALF INCH IN DIAMETER AND THIRTY-SIX INCHES IN LENGTH, ENCASED IN CONCRETE CYLINDERS AT LEAST FOUR INCHES IN DIAMETER AND THIRTY-SIX INCHES IN DEPTH HAVE BEEN PLACED AT ALL POINTS MARKED THUS (O) AS THEREON SHOWN AT ALL ANGLES IN THE BOUNDARIES OF THE LANDS PLATTED, AT ALL INTERSECTIONS OF ROADS, AND AT ALL INTERSECTIONS OF ROADS WITH THE BOUNDARIES OF THE PLAT AS SHOWN ON SAID PLAT.

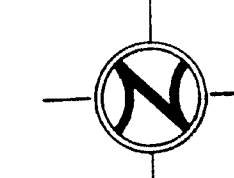
George Blass
 GEORGE BLASS R.L.S. NO. 5489

ALL DIMENSIONS ARE IN FEET AND DECIMALS THEREOF



COPY
 Register's Office
 Lake County, S. S.

Plat of Deer Track Pines
 was recorded this 14 day of September 1962 at 9:00 AM in Liber 3 of plates on Page 13 of Taft V. Utter



September 13, 1962
 October 16, 1962
 September 13, 1962
Richard E. Roway