

# DEERPATH SHORES

THE E1/2-NE1/4  
SEC. 14 T19N R12W  
SOUTH NEWKIRK TWP.  
LAKE CO., MICH.

I hereby certify this copy is a true copy of map or plat forwarded to the register of deeds for recording.

Date March 2, 1960  
FILED IN AUDITOR GENERAL'S DEPT.  
Date March 2, 1960  
EXAMINED AND APPROVED  
Date March 2, 1960

Otis M. Smith  
OTIS M. SMITH  
AUDITOR GENERAL  
By D. L. MacElroy  
D. L. MacElroy - Plat Engineer

SCALE  
0 100 200 400  
1 INCH = 200 FEET

ALL DIMENSIONS ARE IN FEET  
AND DECIMALS THEREOF

COPY  
Register's Office  
Lake County, Mich.  
Plat of Deerpath Shores  
was Recorded this 15th day of  
March, A.D., 1960 at 10 o'clock  
A.M. in Liber 43 of plate  
No. 3  
George Blass  
Register of Deeds

### CERTIFICATE OF MUNICIPAL APPROVAL:

This plat was approved by the township board of the township of South Newkirk at a meeting held on the 17th day of October 1960.

Mary Kessel  
Mary Kessel Twp. Clerk

### CERTIFICATE OF APPROVAL BY THE BOARD OF COUNTY ROAD COMMISSIONERS:

This plat has been examined, and was approved on the 14th day of October 1960, by the Lake Co. Board of Road Commissioners.

N. E. Wicks Chr.

Alfred Kinney Member

Albert Berzley Member

### COUNTY TREASURER'S CERTIFICATE RELATING TO TAXES:

Office of the county treasurer, Lake County, Michigan;

I hereby certify that there are no tax liens or titles held by the State on the lands described hereon; and that there are no tax liens or titles held by individuals on said lands, for the five years preceeding the 15th day of October 1960, and that the taxes for said period of five years are paid, as shown by the records of this office.

This certificate does not apply to taxes, if any, now in the process of collection by township, or county collecting officers.

Earl Gibson  
Earl Gibson County Treasurer

### CERTIFICATE OF APPROVAL BY COUNTY BOARD:

This plat was approved on the 15 day of Oct 1960 by the Lake County Plat Board.

Taft W. Utter Co. Clerk

Earl Gibson Co. Treasurer

APPROVED

Gary Burnett Chr. Bd. of Supr.

John C. Mackie  
JOHN C. MACKIE  
STATE HIGHWAY COMMISSIONER

### DEDICATION:

Know all men by these presents, that Gerald A. Derks as proprietor, and Agnes M. Derks, his wife, have caused the land embraced in the annexed plat to be surveyed, laid out, and platted, to be known as "DEERPATH SHORES", The E1/2 - NE1/4, Sec. 14, T19N R12W, South Newkirk Twp., Lake Co., Mich., and that the roads and highway as shown on said plat are hereby dedicated to the use of the public.

Signed and sealed in the presence of:

Irene M. Mastee  
Kenneth E. Fauble  
Kenneth E. Fauble

Gerald A. Derks  
Gerald A. Derks  
Agnes M. Derks  
Agnes M. Derks

State of Michigan )  
County of Muskegon ) ss

On this 3rd day of October 1960, before me, a Notary Public in and for said county, personally came the above named Gerald A. Derks, and Agnes M. Derks, his wife, known to me to be the persons who executed the above dedication, and acknowledged the same to be their free act and deed.

My commission expires  
1/21/62.

Kenneth E. Fauble  
Kenneth E. Fauble  
Notary Public  
Muskegon Co., Mich.

### DESCRIPTION:

The land embraced in the annexed plat of "DEERPATH SHORES", The E1/2-NE1/4, Sec. 14, T19N R12W, South Newkirk Twp., Lake Co., Mich., is described as beginning at the NE Cor. said Sec. 14, thence S 0°-58'-30" W, along the East line of said Sec. 14, 2622.56 feet to the E1/4 Cor. of said Sec. 14, thence N 88°-42'-10" W along the East and West 1/4 line of said Sec. 14, 1302.12 feet, thence N 1°-01'-40" E 2623.66 feet to the North line of said sec. 14, thence S 88°-39'-15" E along the North line of said Sec. 14, 1299.65 feet to the point of beginning. (NE Cor. said sec. 14)

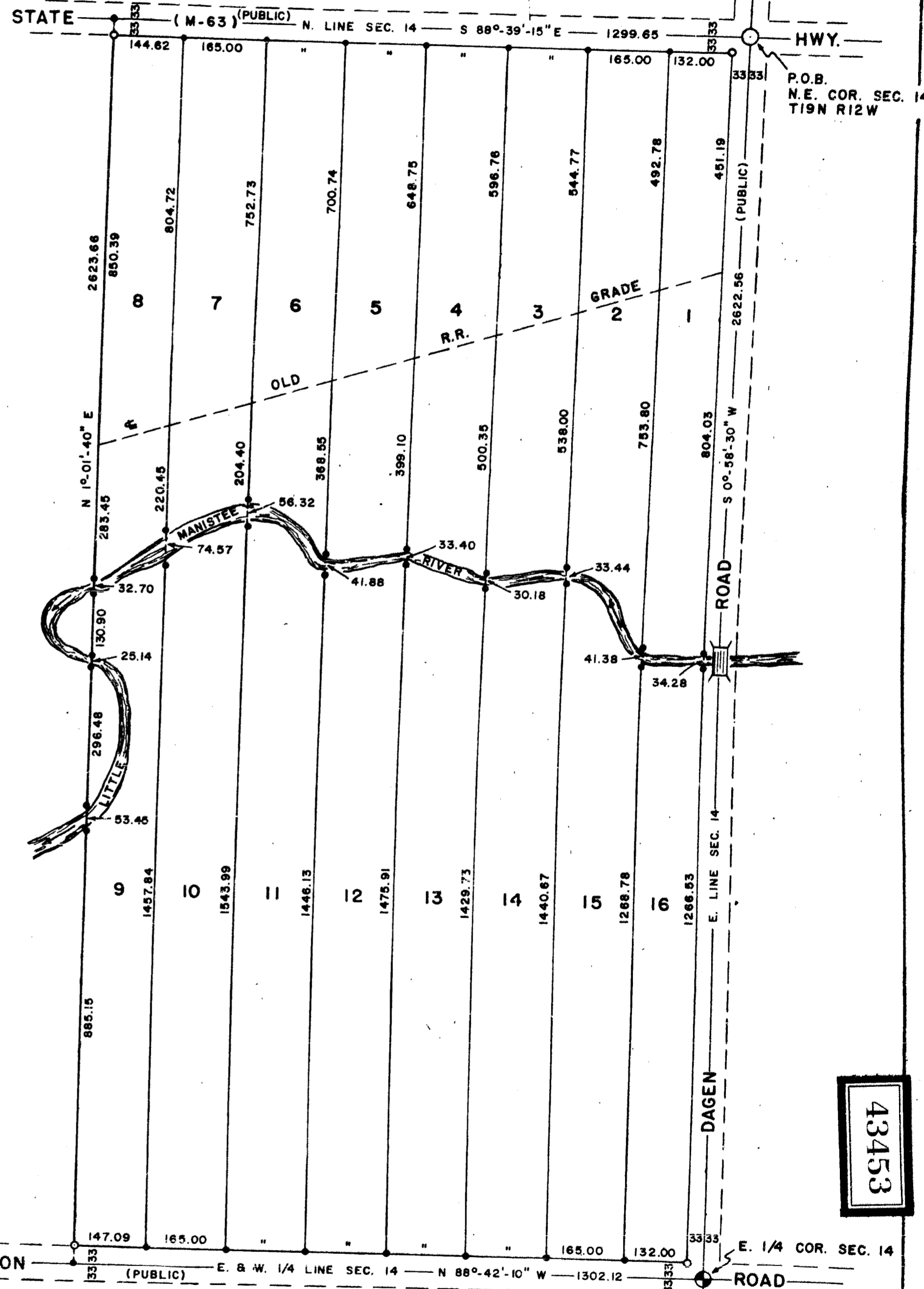
Plat contains a total of 16 lots.....

### SURVEYOR'S CERTIFICATE:

I hereby certify that the plat hereon delineated is a correct one, and that permanent metal monuments consisting of bars not less than one-half inch in diameter, and thirty-six inches in length, encased in a concrete cylinder not less than four inches in diameter and thirty-six inches in depth, have been placed at points marked thus (o) as thereon shown at all angles in the boundaries of the land platted, at all intersections of roads and highway, and at all intersections of roads and highway with the boundaries of the plat as shown on said plat.

One-half inch iron pipe, eighteen inches in length have been placed at points marked thus (o) as shown on said plat.

George Blass  
George Blass R.L.S. #5489



BASS SURVEYS  
BALDWIN, MICH.