

Plat contained in
3 Sheets
Sheet No. 1.

SUPERVISOR'S PLAT OF CHAIN-O-LAKES

Part of E 1/2 of Sec. 21 T17NR14W
LAKE TWP
LAKE CO., MICH.

SCALE: 1 in = 100 ft

NOTE: All dimensions are in feet and decimals thereof.

DEDICATION

KNOW ALL MEN BY THESE PRESENTS: That I, John De Groot, Supervisor of the Township of Lake, Lake County, State of Michigan, by virtue of authority in me vested by Sec. 51, Act 172 of the Public Acts of 1929, having been duly authorized by the Township Board of the Twp. of Lake, have caused the land described in the annexed Plat to be surveyed, laid out and platted to be known as, Supervisor's Plat of Chain-O-Lakes, part of the E 1/2 of Sec. 21 T17NR14W, Lake Twp, Lake Co, Mich., and that the streets, walks and parks shown on said plat are now being used for such purposes

WITNESSES

John De Groot Supervisor of Lake Township.

ACKNOWLEDGEMENT

STATE OF MICH } ss
COUNTY OF LAKE }

On this 5th day of June 1947 before me, a Notary Public, in and for said County, personally came the above named John De Groot, Supervisor of the Township of Lake, know to me to be the person who executed the above dedication and acknowledged the same to be his free act and deed as such Supervisor.

My Commission expires Nov 21 1947
John De Groot Notary Public, Lake Co, Mich.

APPROVAL by BOARD of COUNTY ROAD COMMISSIONERS

This plat has been examined and was approved on the 5th day of June 1947 by the Lake County Board of Road Commissioners.

Alfred Starnett Chairman
John De Groot Member

DESCRIPTION OF LAND PLATTED

The land embraced in the annexed plat of, Supervisor's Plat of Chain-O-Lakes, part of E 1/2 of Sec. 21 T17NR14W, Lake Twp, Lake Co, Mich. is described as follows: Beginning at a point which is N0°30'E 932.76' from Sec. Corn common to Secs 21, 22, 23, 24 T17NR14W, thence S55°46'W 410.50' — S 71°23'W 803.55' — N53°43'W 1459.20' — N40°33'W 386.54' — to N45 1/4 line, thence N0°57'30"W 917.50' to center 1/4 post, thence N89°41'30"E 745.0' — S44°31'E 879.5' — S29°20'E 244.0' — S77°14'E 262.0' — S18°08'E 140.0' — N85°54'E 214.32' — N30°48'E 478.0' — N41°31'E 376.84' — S48°54'15"E 920.78' — S89°30'E 116.0' to E. Sec line of Sec. 21, thence S 0°30'W 1241.18' on Sec. line to Point of Beg.

SURVEYOR'S CERTIFICATE

I hereby certify that the plat hereon delineated is a correct one and that permanent metal monuments consisting of bars not less than one-half inch in diameter and 48 inches in length, encased in a concrete cylinder at least 4 inches in diameter and 48 inches in depth have been placed at points marked thus (O) as thereon shown at all angles in the boundaries of the land platted, at all the intersections of streets, and at the intersections of streets with the boundaries of the plat as shown on said plat.

George B. Bess
Deputy Auditor General

Examined and Approved

John De Groot
Notary Public

PREPARED May 16, 1947
John De Groot
Surveyor

Examined and Approved

John De Groot
Notary Public

FILED IN AUDITOR GENERAL'S DEPT.

MUNICIPAL APPROVAL

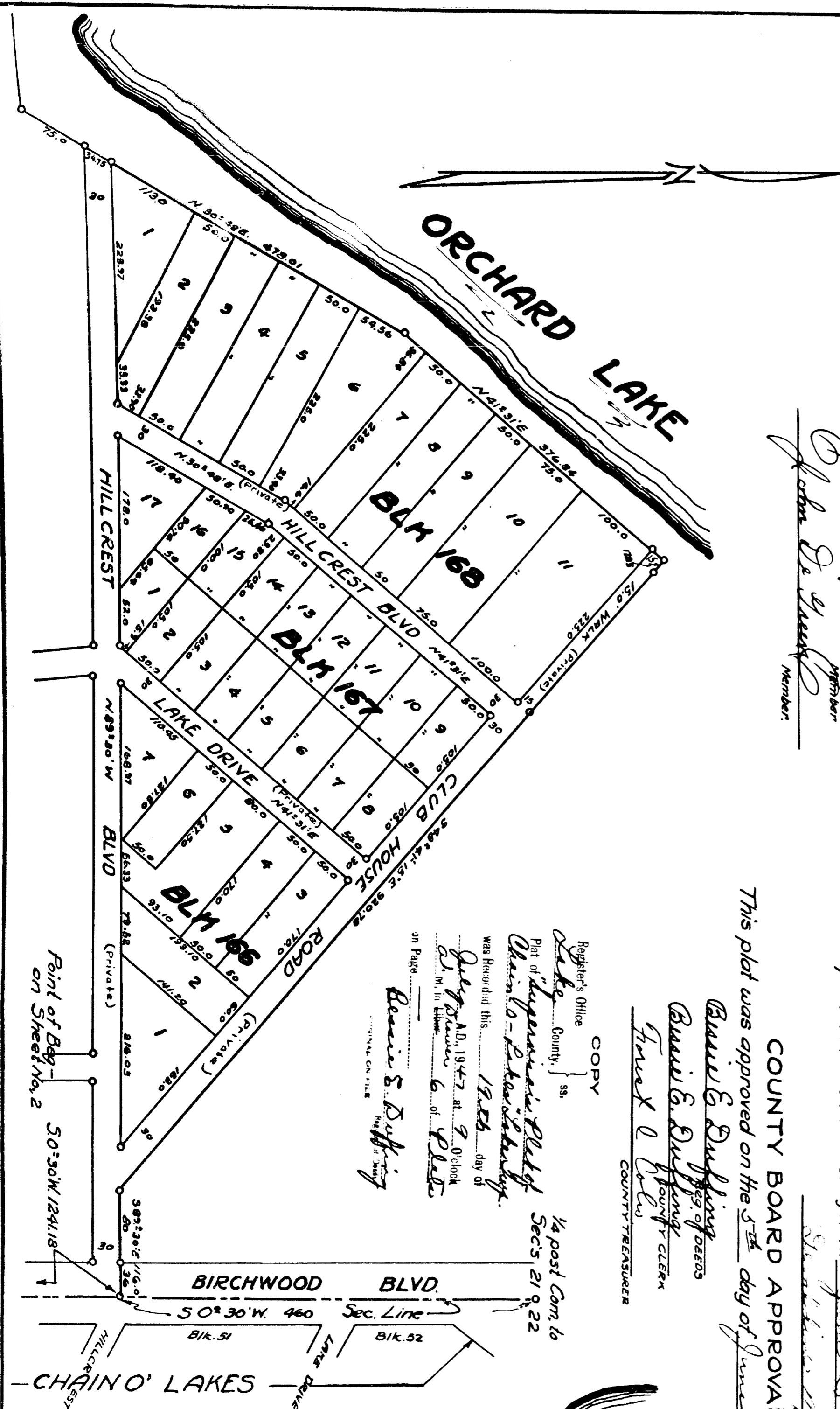
This plat was approved by the Township Board of the Township of Lake at a meeting held June 3, 1947

COUNTY BOARD APPROVAL

This plat was approved on the 5th day of June 1947

Bessie E. Duffing
County Treasurer

Register's Office
COPY
County, ss.
John De Groot
Notary Public

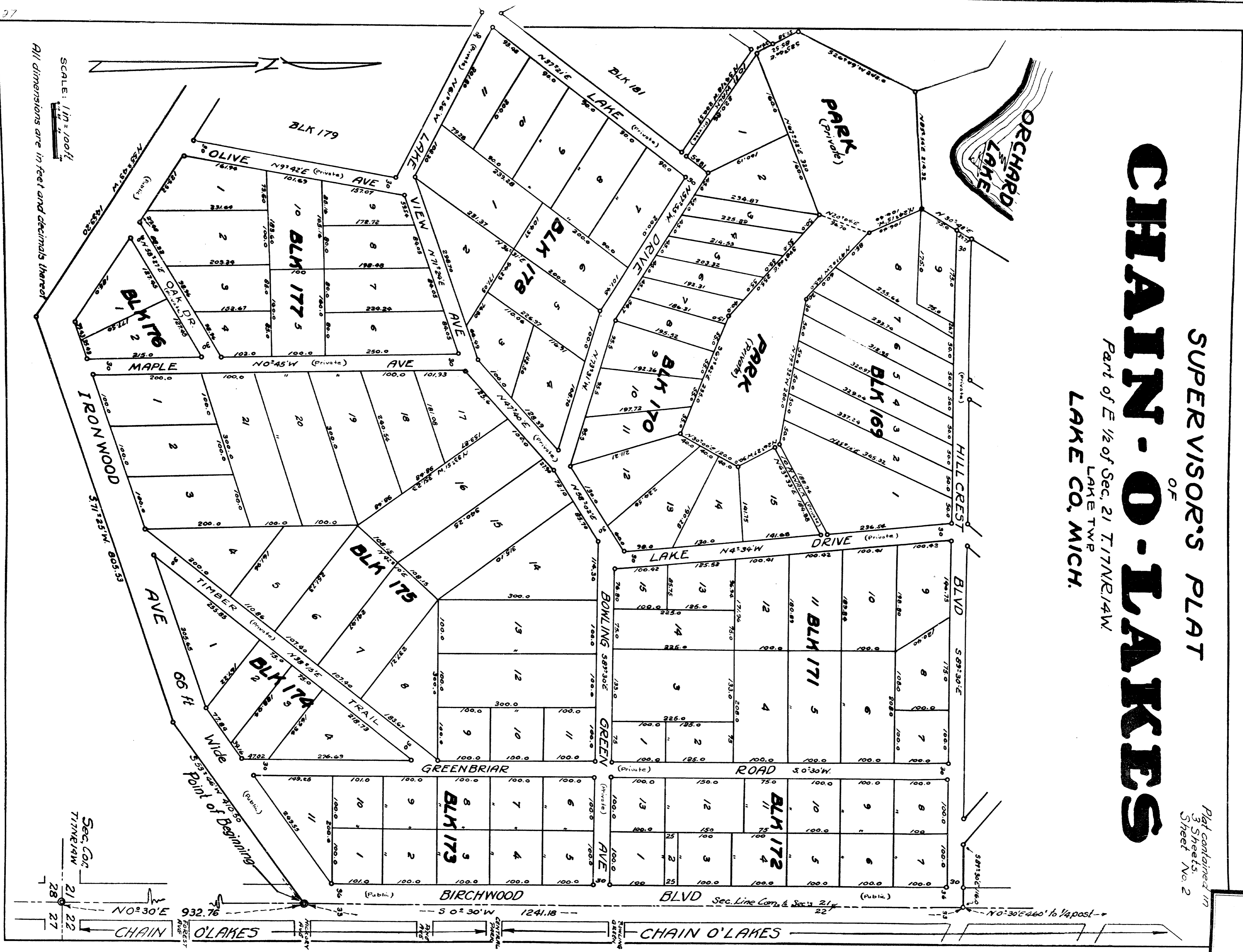


"Color Plat"
Multi-Color Co.
823 Woodward Detroit

CHAIN-O-LAKES

SUPERVISOR'S PLAT
 OF
LAKE CO., MICH.
 Part of E 1/2 of Sec. 21 T.17N.R.14W
 LAKE TWP

Plat contained in
 3 Sheets
 Sheet No. 2



SCALE: 1 in = 100 ft
 All dimensions are in feet and decimals thereof

27
 Chain O'Lakes
 Map
 833 Woodward Detroit

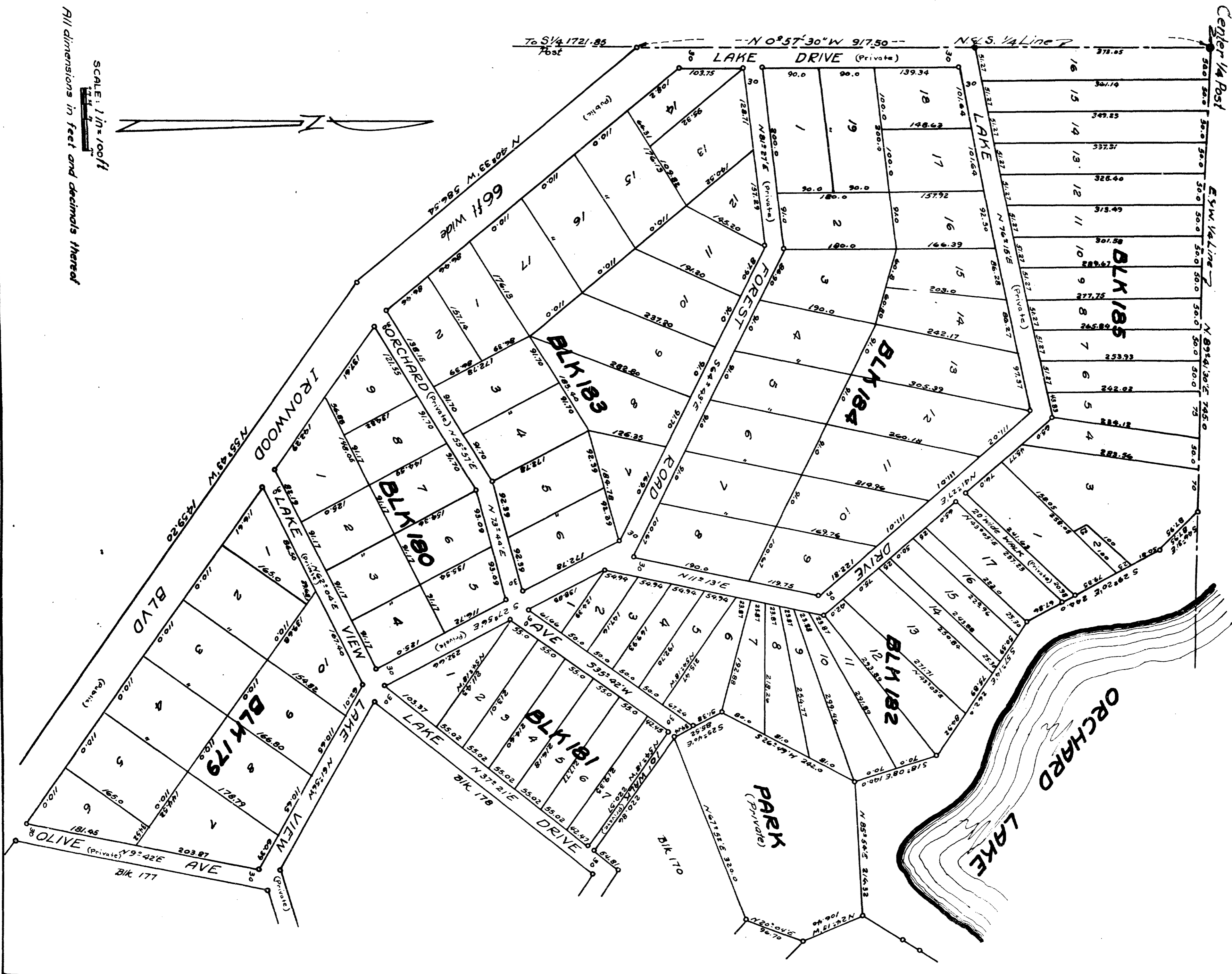
J. J. Warner
 Register of Deeds
 Wayne Jewell Purdy DEPUTY AUDITOR GENERAL

SUPERVISOR'S PLAT
OF

CHAIN-O-LAKES

Part of E 1/2 of Sec. 21 T17N R14W
LAKE TWP
LAKE CO. MICH.

Plat contained in
3 Sheets
Sheet No. 3.



A. U. Warner
Register of Deeds

Mayne Jewell Fordy DEPUTY AUDITOR GENERAL

SCALE: 1 in = 100 ft
All dimensions in feet and decimals thereof

623 Woodward-Detroit