

47999

"CEDAR BEND"

PART OF THE SE 1/4 OF NE 1/4
SEC. 17, T19N R14W,
SAUBLE TWP.
LAKE CO. MICH.

SCALE
1 INCH = 100 FEET
0 50 100 200
ALL DIMENSIONS ARE IN FEET AND DECIMALS THEREOF
CURVE MEASUREMENTS ARE ARC DIMENSION

DEDICATION
KNOW ALL MEN BY THESE PRESENTS, That we FOUNTAIN ENTERPRISES a Michigan Corporation by Walter W. Budzynski President, and Phyllis R. Budzynski Secretary, as proprietors, have caused the land embraced in the annexed plat to be surveyed, laid out and platted to be known as "CEDAR BEND" part of the SE 1/4 of NE 1/4 Sec. 17, T19N R14W, Sauble Twp. Lake Co. Mich. and that the drive, trail and road are private, and are hereby dedicated to the use of the lot owners in said plat, except Hamilton Road which is hereby dedicated to the use of the public.

Fountain Enterprises
Fountain Enterprises

Signed and sealed in the presence of
George Bliss
George Bliss
Walter W. Budzynski Pres. Fountain, Mich.
Phyllis R. Budzynski
Phyllis R. Budzynski Sec. Fountain, Mich.
Sammy S. Barnett

STATE OF MICHIGAN) ss
COUNTY OF LAKE

On this First day of April A.D. 1965, before me a notary public in and for said county appeared Walter W. Budzynski and Phyllis R. Budzynski, to me personally known, who being each by me duly sworn did say that they are the President and Secretary respectively of the FOUNTAIN ENTERPRISES a Michigan corporation, and that said instrument was signed and sealed in behalf of said corporation by authority of its Board of Directors and the said Walter W. Budzynski and Phyllis R. Budzynski acknowledged said instrument to be the free act and deed of said corporation.

NOTE:
Corporation has no Corporate seal
George Bliss
George Bliss, Lake Co. Mich.
Notary Public, My Comm. expires Dec. 3, 1966

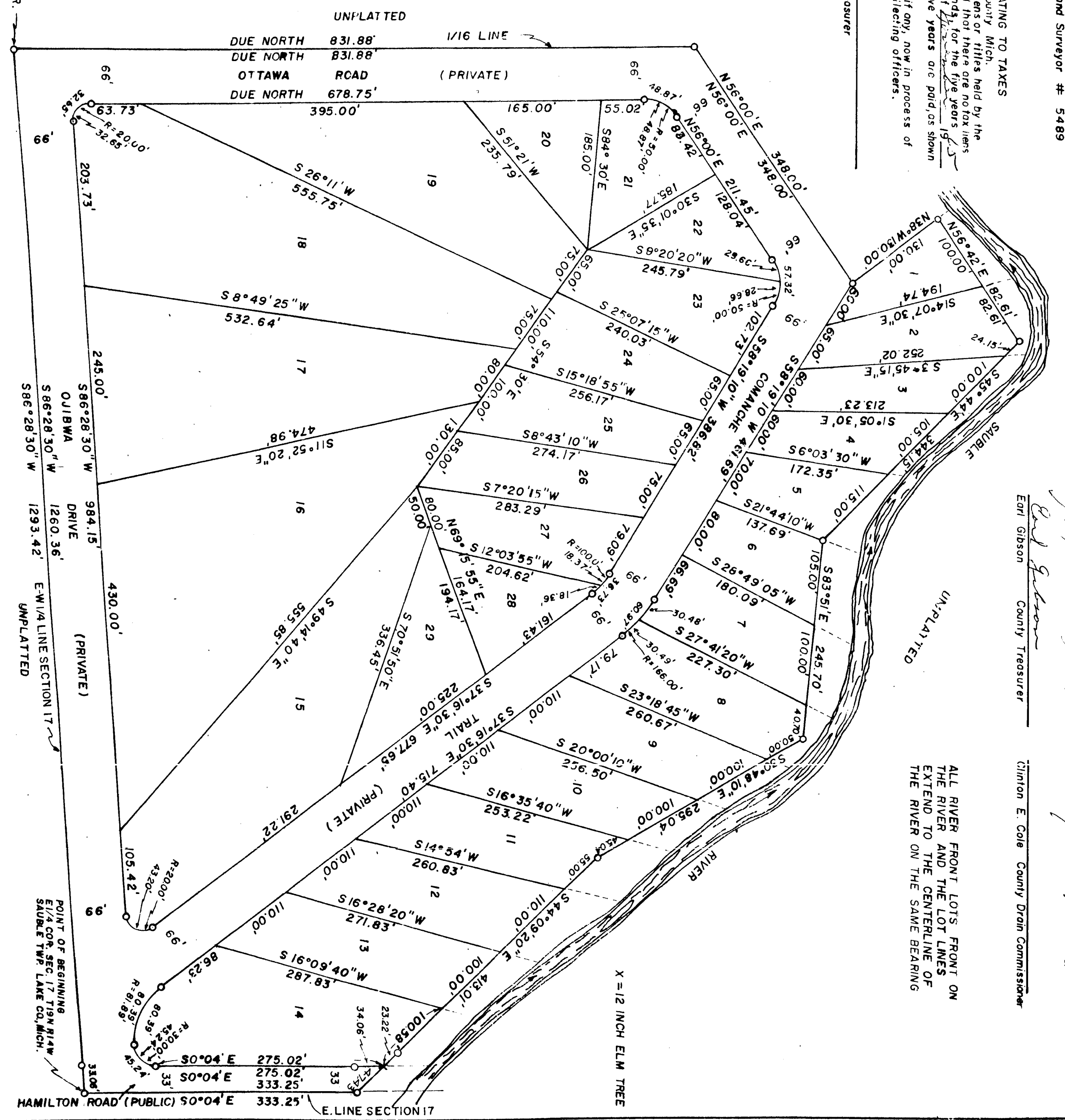
DESCRIPTION
The land embraced in the annexed plat of "CEDAR BEND" part of the SE 1/4 of NE 1/4 Sec. 17, T19N R14W, Sauble Twp. Lake Co. Mich. is described as follows: Beginning at the E 1/4 cor. said sec. 17, Thence S86°28'30" along the E-W 1/4 line 1293.42 feet to the E 1/16 line, Thence Due North along the E 1/16 line 831.88 feet, Thence N56°00' E 348.00 feet, Thence N39°W 130.00 feet, Thence N55°42'E 182.61 feet, Thence S45°44'E 344.15 feet, Thence S83°51'E 245.70 feet, Thence S30°48'10"E 295.04 feet, Thence S44°09'20"E 913.25 feet to the point of beginning. Plat contains a total of 29 lots.

SURVEYOR'S CERTIFICATE
I hereby certify that the plat hereon delineated is a correct one and that permanent metal monuments consisting of iron rods at least one half inch in diameter and thirty-six inches in length encased in concrete cylinder at least four inches in diameter and thirty-six inches in length have been placed at all points marked thus (O) as thereon shown at all angles in length the boundary of the plat, at the intersection of lines of streets, and at intersection of the lines of streets with the boundaries of the plat as shown on said plat. Prepared and drafted under the direction of,
George Bliss
George Bliss
Reg. Land Surveyor # 5489
Baldwin, Mich.

COUNTY TREASURERS CERTIFICATE RELATING TO TAXES
Office of the County Treasurer, Lake County Mich.
I hereby certify that there are no tax liens or titles held by the State on the lands described herein, and that there are no tax liens or titles held by individuals on said lands for the five years preceding the day of April 1965 and that the taxes for said period of five years are paid as shown by the records of this office.
This certificate does not apply to taxes if any, now in process of collection by township, city or village collecting officers.
Earl Gibson
Earl Gibson
County Treasurer

COPY
Register's Office } S.S.
Lake County }
Plat of *Cedar Bend*
was recorded this 5 day of April A.D. 1965 at 9:00 o'clock A.M. in Liber 5 of 1965 on Page 111
Earl Gibson
Earl Gibson
Register of Deeds
ORIGINAL ON FILE

I hereby certify this copy is a true copy of map or plat forwarded the Register of Deeds for recording.
Date: April 14, 1965
FILED IN OFFICE OF TREASURY
Date: April 14, 1965
Date: April 14, 1965
By *Alison Green*
Alison Green
STATE TREASURER
By *Richard E. Long*
Richard E. Long
FBI Examiner



CERTIFICATE OF APPROVAL BY BOARD OF COUNTY ROAD COMMISSIONERS
This plat has been examined and was approved on the 4th day of April 1965, by the Lake County Board of Road Commissioners.
N.E. Wicks
N.E. Wicks Chairman
Alfred Kimney
Alfred Kimney Member
Albert Bertley
Albert Bertley Member

CERTIFICATE OF MUNICIPAL APPROVAL
This plat was approved by the township board of the township of Sauble at a meeting held April 19 1965 and complies with Sec. 19A and the width of lots is in compliance with requirements of Sec. 30, Act 172, of 1929, as amended.
Lorothy Bender
Lorothy Bender Clerk
Earl Gibson
Earl Gibson
County Treasurer
Clinton E. Cole
Clinton E. Cole
County Drain Commissioner

CERTIFICATE OF APPROVAL BY COUNTY BOARD
This plat was approved on the 5th day of April 1965 by the Lake County Plat Board.
Joseph Messake
Joseph Messake Chf. Board of Supr.
Tarf V. Ufer
Tarf V. Ufer
County Clerk Reg. of Deeds

ALL RIVER FRONT LOTS FRONT ON THE RIVER AND THE LOT LINES EXTEND TO THE CENTERLINE OF THE RIVER ON THE SAME BEARING
X = 12 INCH ELM TREE