

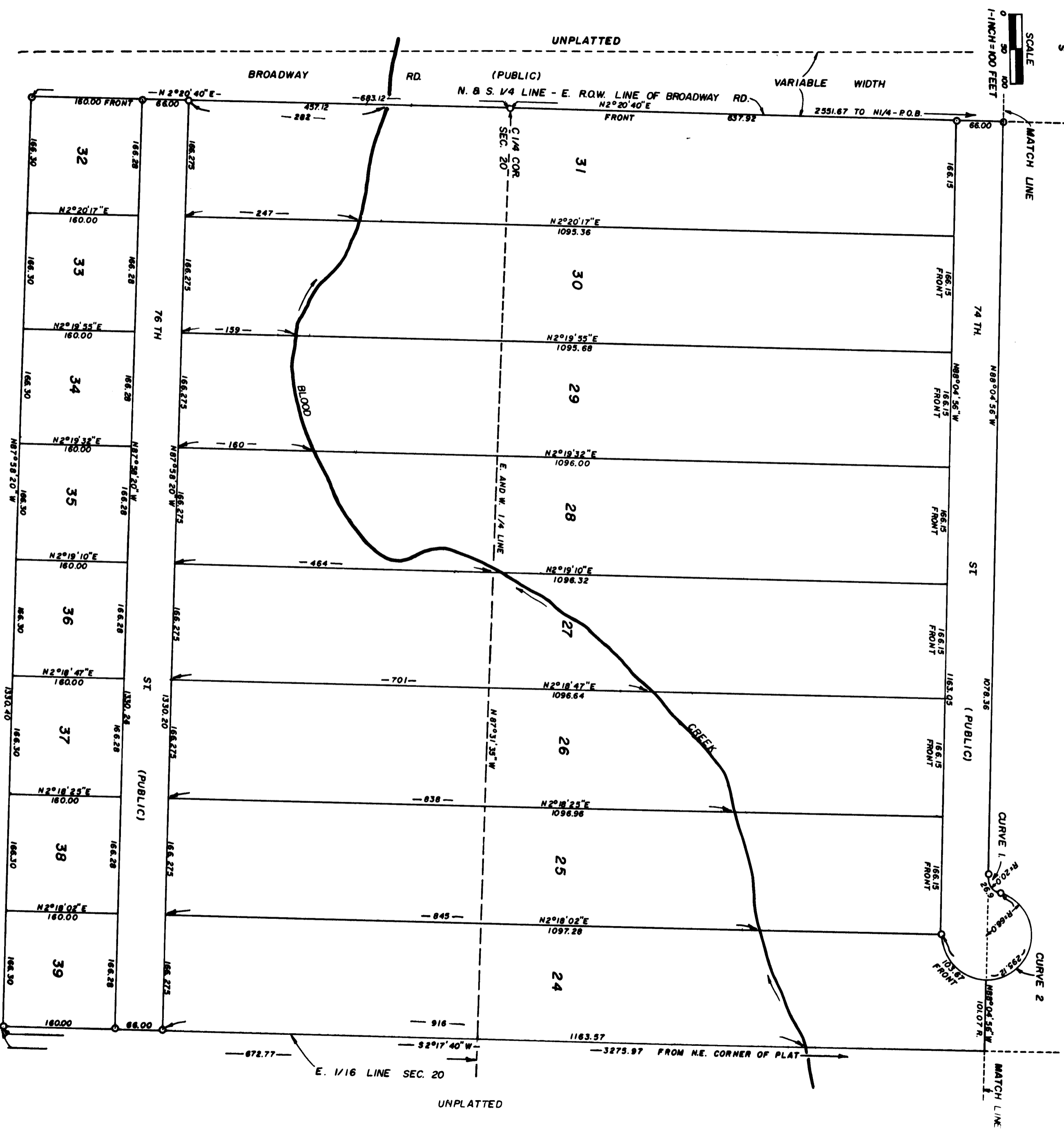
BLOOD CREEK CROSSING

ALL OF W. 1/2 OF N.E. 1/4 AND N. 1/2 OF NW 1/4 OF S.E. 1/4, SEC. 20
 T17N R12W YATES TWP
 LAKE CO., MICH.

SHEET 3 OF 3 SHEETS

ALL DIMENSIONS ARE IN FEET.
 CURVE MEASUREMENTS ARE ARC DIMENSION.
 CONCRETE MONUMENTS HAVE BEEN PLACED
 AT ALL POINTS MARKED THUS: (O).
 LOT CORNERS HAVE BEEN MARKED WITH
 18" T IRONS.
 BEARING DATUM ESTABLISHED FROM 1955
 SURVEY OF SEC. 20

CURVE DATA	CURVE No. 1	CURVE No. 2
CENTRAL ANGLE	76°37'44"	256°37'44"
RADIUS	20.00	66.00
LONG CHORD LENGTH	24.80	103.57
LONG CHORD BEARING	N53°36'12"E	S36°23'48"E



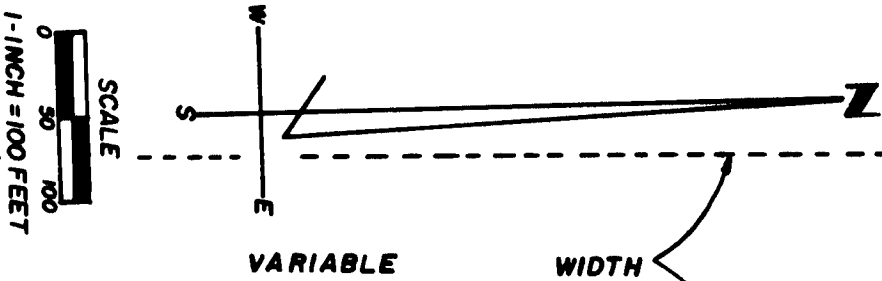
51132



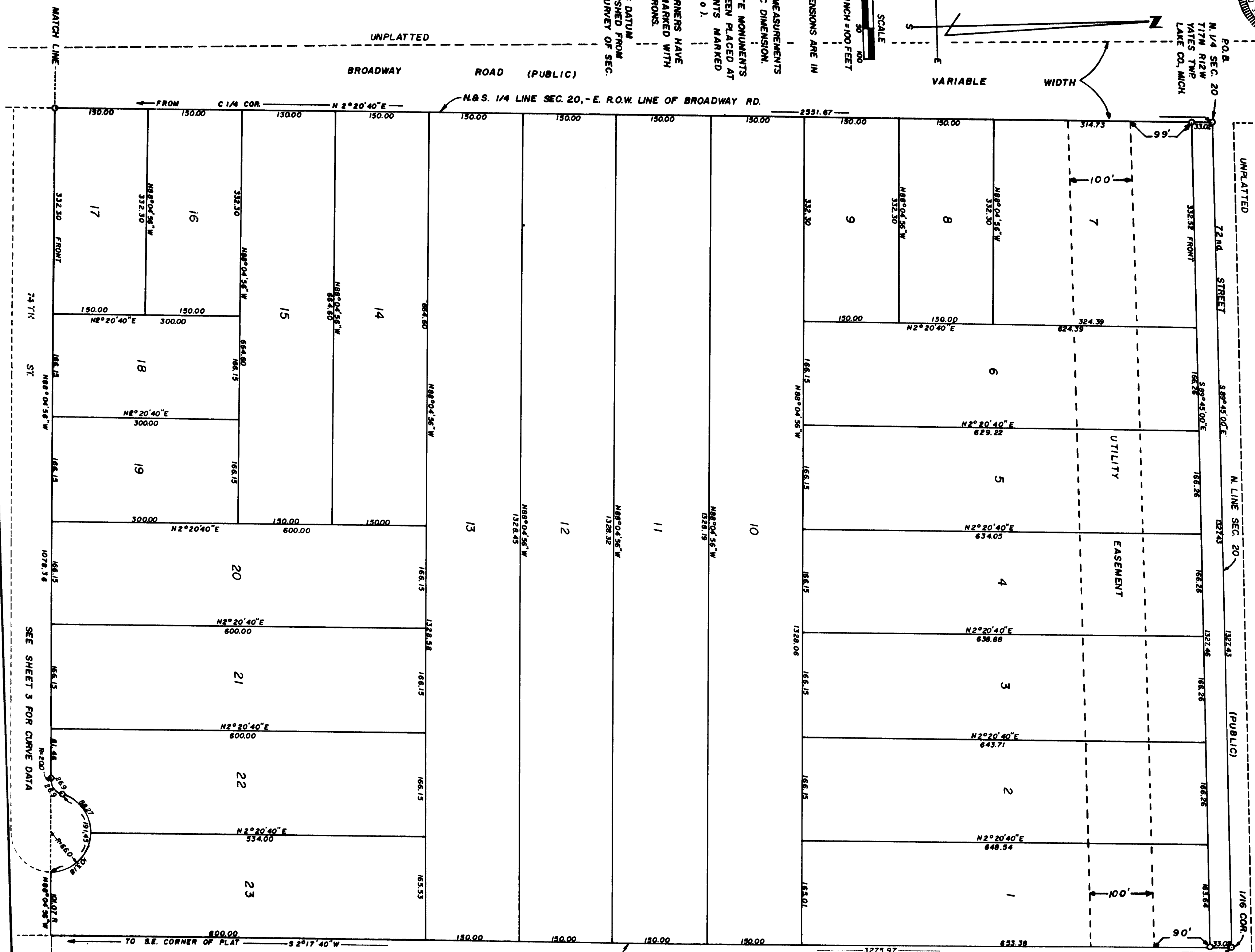
BLOOD CREEK CROSSING

ALL OF W/2 OF NE 1/4 AND N/2 OF NW 1/4 OF SE 1/4, SEC. 20
T17N R12W YATES TWP
LAKE CO., MICH.

SHEET 2 OF 3 SHEETS

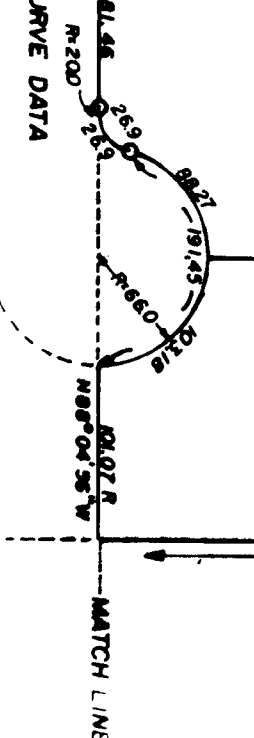


ALL DIMENSIONS ARE IN FEET.
CURVE MEASUREMENTS ARE ARC DIMENSION.
CONCRETE MONUMENTS HAVE BEEN PLACED AT ALL POINTS MARKED THUS (o).
LOT CORNERS HAVE BEEN MARKED WITH 1/8" T. IRONS.
BEARING DATUM ESTABLISHED FROM 1955 SURVEY OF SEC. 20.



51132

SEE SHEET 3 FOR CURVE DATA



BLOOD CREEK CROSSING

SHEET 1 OF 3 SHEETS

ALL OF W 1/2 OF N.E. 1/4 AND N.W. 1/4 OF S.E. 1/4, SEC. 20
T17N R12W YATES TWP
LAKE CO., MICH.

SURVEYOR'S CERTIFICATE:

I GEORGE BLASS, SURVEYOR, CERTIFY THAT I HAVE SURVEYED, DIVIDED AND MAPPED THE LAND SHOWN ON THIS PLAT, DESCRIBED AS FOLLOWS: BLOOD CREEK CROSSING, ALL OF THE W 1/2 OF THE N.E. 1/4 AND THE N.W. 1/4 OF THE S.E. 1/4 OF SEC. 20, T17N R12W YATES TWP, LAKE CO., MICH. BEGINNING AT THE N. 1/4 CORNER OF SAID SEC. 20, THENCE S89°45'00"E ALONG THE N. SEC. LINE 1327.43 FT. TO THE E. 1/16 LINE OF SAID SEC., THENCE S2°17'40"W ALONG SAID 1/16 LINE 3275.97 FT., THENCE N87°58'20"W 1330.40 FT. TO THE N. AND S. 1/4 CORNER OF SAID SEC. 20, THENCE N2°20'40"E ALONG SAID 1/4 LINE 683.12 TO THE N.W. CORNER OF SAID SEC. 20, CONTAINING 39 LOTS, AND THAT I HAVE MADE SUCH SURVEY, LAND SUB-DIVISION AND PLAT BY THE DIRECTION OF THE OWNERS OF SUCH LAND, THAT SUCH PLAT IS A CORRECT REPRESENTATION OF ALL THE EXTERIOR BOUNDARIES OF THE LAND SURVEYED AND THE SUB-DIVISION OF IT, THE REQUIRED MONUMENTS AND LOT MARKERS HAVE BEEN LOCATED IN THE GROUND OR THAT SURETY BOND HAS BEEN DEPOSITED WITH THE MUNICIPALITY AS REQUIRED BY SEC. 125 OF THE ACT, THAT THE ACCURACY OF THE SURVEY IS WITHIN THE LIMITS REQUIRED BY SEC. 126 OF THE ACT, THAT THE BEARINGS SHOWN ON THE PLAT ARE EXPRESSED AS REQUIRED BY SECTION 126(3) OF THE ACT AND AS EXPLAINED IN THE LEGEND.

April 12, 1969
DATE

BLASS SURVEYS
780 MICH. AVE. BALDWIN, MICH. 49304



George Blass
R.L.S. 5489

PROPRIETORS CERTIFICATE: CORPORATION

TIMBER POINTE LAND CO., A CORPORATION DULY ORGANIZED AND EXISTING UNDER THE LAWS OF THE STATE OF MICHIGAN BY, RUSSEL C. DEWALD, PRESIDENT AND MALCOLM C. DEWALD, SECRETARY-TREASURER, AS PROPRIETOR, HAS CAUSED THE LAND TO BE SURVEYED, DIVIDED, MAPPED AND DEDICATED AS REPRESENTED ON THIS PLAT AND THAT THE STREETS ARE FOR THE USE OF THE PUBLIC; THAT THE PUBLIC UTILITY EASEMENTS ARE PRIVATE EASEMENTS AND THAT ALL OTHER EASEMENTS ARE FOR THE USES SHOWN ON THE PLAT. LOTS EMBRACING ANY WATERS OF BLOOD CREEK ARE SUBJECT TO THE CORRELATIVE RIGHTS OF OTHER RIPARIAN OWNERS AND TO THE PUBLIC TRUST IN THESE WATERS.

TIMBER POINTE LAND COMPANY
106-1/2 E. FRONT ST.
TRAVERSE CITY, MICH. 49684

George Blass
GEORGE BLASS

Russel C. Dewald
RUSSEL C. DEWALD PRESIDENT

Malcolm C. Dewald
MALCOLM C. DEWALD

Malcolm C. Dewald
MALCOLM C. DEWALD SEC.-TREAS.

STATE OF MICHIGAN } ss.
LAKE COUNTY

PERSONALLY CAME BEFORE ME THIS 12th DAY OF APRIL, 1969, RUSSEL C. DEWALD, PRESIDENT, AND MALCOLM C. DEWALD, SECRETARY-TREASURER OF THE ABOVE NAMED CORPORATION, TO ME KNOWN TO BE THE PERSONS WHO EXECUTED THE FOREGOING INSTRUMENT, AND TO ME KNOWN TO BE SUCH PRESIDENT AND SECRETARY-TREASURER OF SAID CORPORATION, AND ACKNOWLEDGED THAT THEY EXECUTED THE FOREGOING INSTRUMENT AS SUCH OFFICERS AS THE FREE ACT AND DEED OF SAID CORPORATION, BY ITS AUTHORITY.

George Blass
GEORGE BLASS NOTARY PUBLIC
LAKE COUNTY, MICHIGAN

MY COMMISSION EXPIRES NOV 16, 1970.

COUNTY TREASURER'S CERTIFICATE:

THE RECORDS IN MY OFFICE SHOW NO UNPAID TAXES OR SPECIAL ASSESSMENTS FOR THE FIVE YEARS PRECEDING April 18, 1969 INVOLVING THE LANDS INCLUDED IN THIS PLAT.

John P. Riley Jr.
JOHN P. RILEY JR. COUNTY TREASURER
LAKE COUNTY, MICHIGAN

COUNTY DRAIN COMMISSIONER'S CERTIFICATE:

APPROVED ON _____ AS COMPLYING WITH SECTION 192, OF ACT 288 P.A. 1967 AND THE APPLICABLE RULES & REGULATIONS PUBLISHED BY MY OFFICE IN THE COUNTY OF LAKE.

NONE COUNTY DRAIN COMMISSIONER

CERTIFICATE OF COUNTY ROAD COMMISSIONER'S

APPROVED ON April 15, 1969 AS COMPLYING WITH SECTION 193, OF ACT 288 P.A. 1967 AND THE APPLICABLE RULES AND REGULATIONS OF THE BOARD OF COUNTY ROAD COMMISSIONERS OF LAKE COUNTY.

Albert Berzley
ALBERT BERZLEY MEMBER

Albert Berzley
ALBERT BERZLEY MEMBER

Albert Berzley
ALBERT BERZLEY MEMBER

CERTIFICATE OF MUNICIPAL APPROVAL:

I CERTIFY THAT THIS PLAT WAS APPROVED BY THE TOWNSHIP BOARD OF THE TOWNSHIP OF YATES, AT A MEETING HELD July 2, 1969 1.5.1969 AND WAS REVIEWED AND FOUND TO BE IN COMPLIANCE WITH ACT 898 P.A. 1967. APPROVED Thomas J. Hoskins, 22, 1744 E BY THE DIST. HEALTH DEPT. N.E. 5, AND THAT THE PROPRIETORS HAVE BEEN REQUIRED TO COMPLY WITH THE PROVISIONS OF SEC. 192 OF THE ACT.

Patricia Hoskins
PATRICIA HOSKINS YATES TWP. CLERK

COUNTY PLAT BOARD CERTIFICATE:

THIS PLAT HAS BEEN REVIEWED AND WAS APPROVED BY THE LAKE COUNTY PLAT BOARD ON July 2, 1969 AS BEING IN COMPLIANCE WITH ALL THE PROVISIONS OF ACT 288, P.A. 1967 AND THE PLAT BOARD'S APPLICABLE RULES AND REGULATIONS.
TAT V. UTTER REG. OF DEEDS - CO. CLERK
James T. Nelson
JAMES T. NELSON CHAIRMAN OF BOARD OF SUPERVISORS

John P. Riley Jr.
JOHN P. RILEY JR. COUNTY TREASURER

RECORDING CERTIFICATE:

STATE OF MICHIGAN
LAKE COUNTY
THIS PLAT WAS RECEIVED FOR RECORD ON THE 8th DAY OF Aug. A.D. 1969 AT 9 A.M. RECORDED IN LIBER 4 OF PLATS ON PAGE 23

Certified true copy of recorded plat.
Tat V. Utter
TAT V. UTTER REGISTER OF DEEDS

Richard E. Lomax - Plat Examiner
Richard E. Lomax
Aug 13, 1969

LOCATION MAP

