

BLASS PARK

Part of Section 33 Township 18 N. Range 12 West Lake County Michigan
SHEET 1 of 2 SHEETS.

22608

KNOW ALL MEN BY THESE PRESENTS, That

George Blass, a widower as proprietor has caused the land embraced in the annexed plat to be surveyed laid out and platted to be known as "BLASS PARK" part of section 33 Township 18 N. Range 12 West Lake County Michigan, and that the streets and drives are hereby dedicated to the public

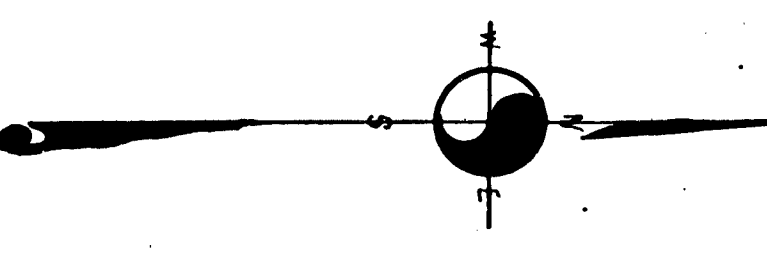
Signed and Sealed
in presence of
Ray Jucka
James Lee
State of MICH. County of LAKE SS
George Blass (L.S.)
Ray Jucka (L.S.)

On this 25th day of November AD 1924 before me a notary public in and for said county personally came the above named George Blass, a widower

Known to me to be the person who executed the above dedication, and acknowledged the same to be there free act and deed

My Commission expires Feb 25 - 1924 NOTARY PUBLIC

Description of Land platted
Commencing at an iron, the 1/4 East corner to Sections 33 and 28 T18N R12W thence east 1500ft thence South 0°45'W 1520ft thence West 2640ft thence North 0°45'E 1320ft thence East 1520ft to place of beginning.



SCALE
All dimensions are in feet and decimals thereof.

Surveyors Certificate
I hereby certify that the plat hereon delineated is a correct one, that permanent monuments consisting of one inch iron pipe twenty inches long have been planted at points marked thus O as there on shown at all angles of the boundaries of the land platted and at all ~~the~~ sections of streets and drives
Ray Jucka Registered Surveyor
Certificate of Municipal approval
This plat was approved by the Township of Chippewaukee at a board meeting held this 19th day of June 1925
Edward J. Bauer Township Clerk
Certificate of approval by County Board
This plat was approved on the 20 day of June 1925
Thomas J. West Judge of Probate
Ray Jucka County Treasurer
Ray Jucka County Clerk

County Treasurers Certificate Relating to Taxes
Section 3350 C.L. 1915 office of County Treasurer Lake Co. Michigan
Thereby certify that there are no tax liens or titles held by the State on the lands described above and that there are no tax liens or titles held by individuals on said land for the five years preceding the 20 day of June 1925 and that the taxes for said period of five years are paid as shown by the records of this office
Ray Jucka Co. Treasurer

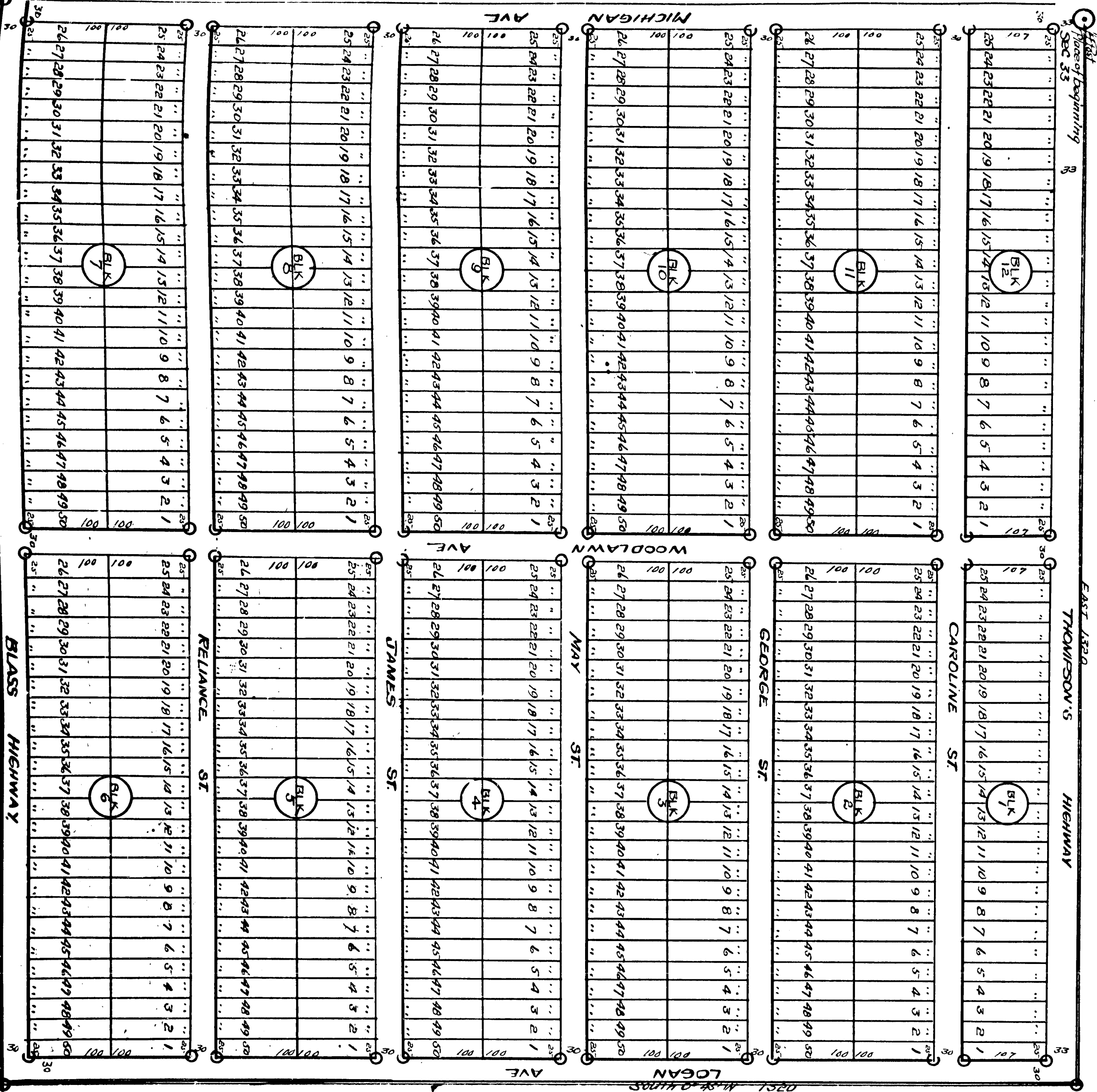
SHEET NO 1
NW 1/4 OF NE 1/4

COPY

Register's Office
Lake County, Wis.

Filed by Blair Park
on recorded this 18th day of June A.D. 1925 at 3 O'clock P.M. in Chippewaukee County, Wis.
Paul S. Johnson
County Clerk

June 26 - 1925
Ray Jucka
Notary Public

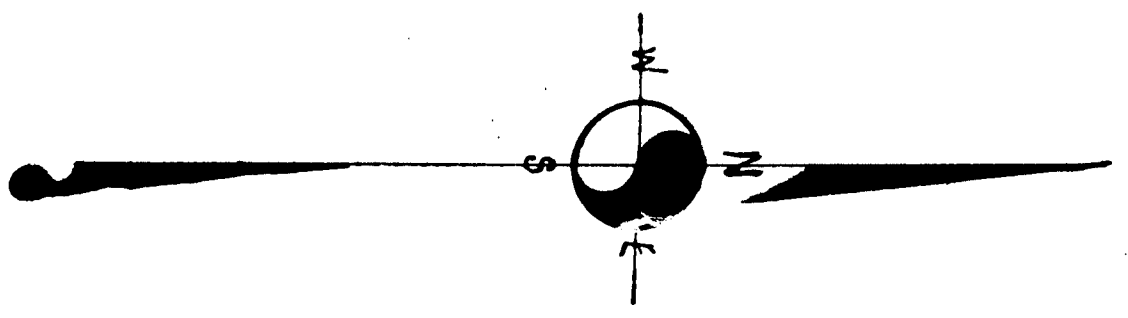


22608

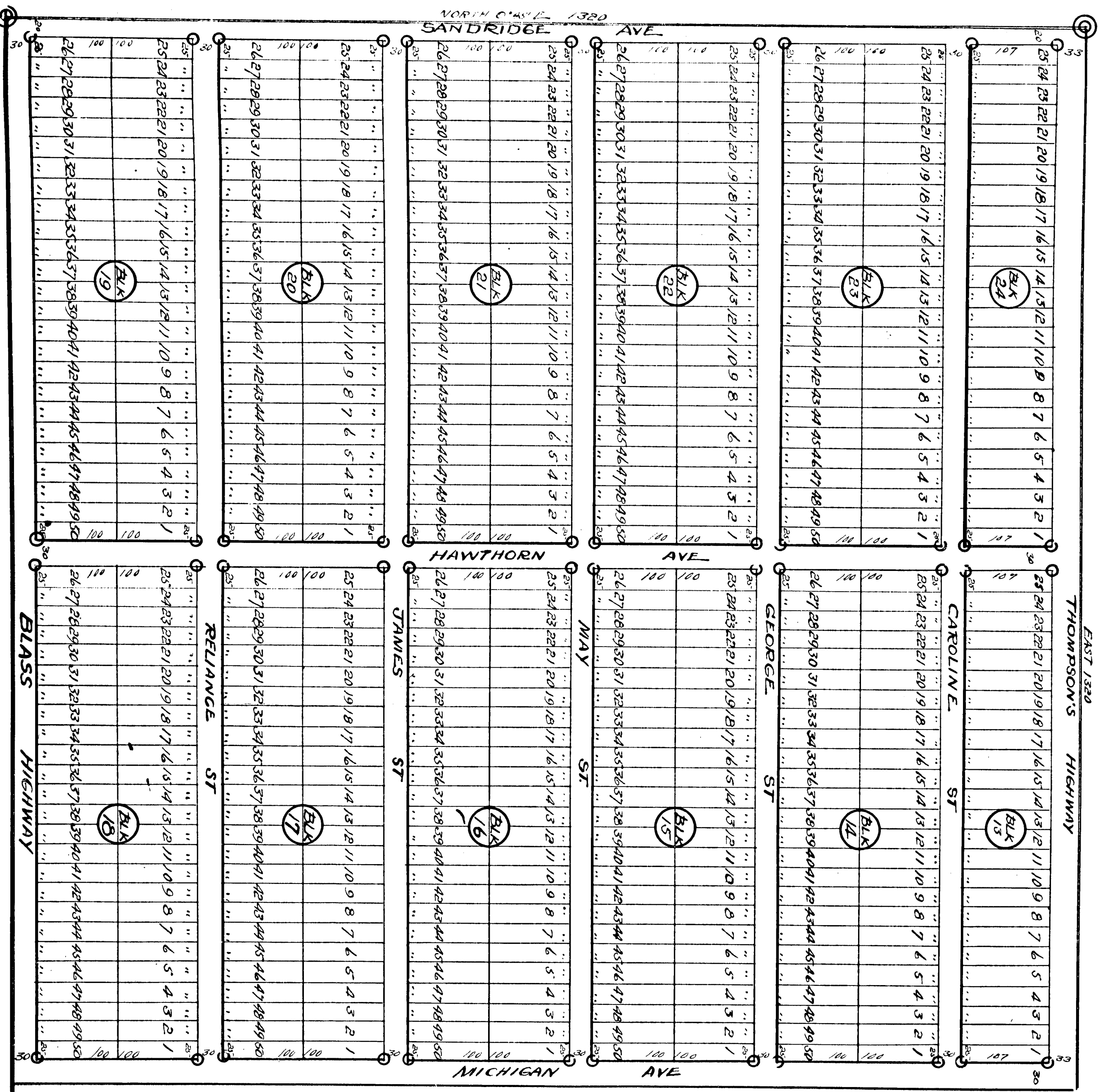
BLASS PARK

Part of Section 33 Township 18N Range 12 W Lake County Michigan
Sheet 2 of 2 Sheets

SCALE
1" = 100'
All dimensions are in feet
and decimals thereof



SHEET NO 2
NE 1/4 of NW 1/4



BLASS PARK

Part of Section 33 Township 18 N Range 12 West Lake County Michigan
SHEET 1 of 2 SHEETS.

22608

Examined
Alice J. G. 6-1925
Deputy Assessor

KNOW ALL MEN BY THESE PRESENTS, That

George Blass, a widower OS proprietor has caused the land embraced in the annexed plat to be surveyed laid out and platted to be known as "BLASS PARK" part of section 33 Township 18 N, Range 12 West Lake County Michigan, and that the streets and drives are hereby dedicated to the public

Signed and Sealed
in presence of
Ray Tuckes
Witness
George Blass, a widower (1st)
Ray Tuckes (1st)

State of MICH.
County of LAKE SS

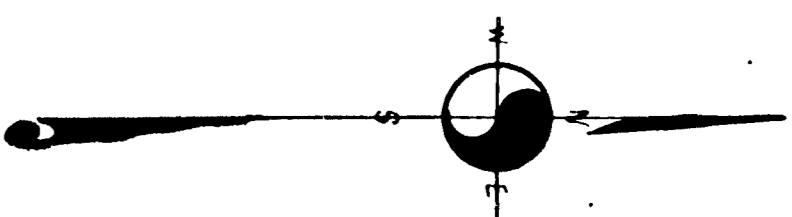
On this 25th day of November AD 1924 before me a notary public in and for said county personally came the above named George Blass, a widower

known to me to be the person who executed the above dedication, and acknowledged the same to be there free and true

My Commission expires 25-11-1927 Notary Public

Description of Land platted
Commencing at an iron the 1/4 East corner to Sections 33 and 34 T18N R12W thence east 1360ft thence South 0°45W 1360ft thence West 2640ft thence North 0°45E 1324ft thence East 1360ft to place of beginning.

SCALE
All dimensions are in feet and decimals thereof



Surveyors Certificate
I hereby certify that the plat hereon delineated is a correct one, that permanent monuments consisting of one inch iron pipe twenty inches long have been planted at points marked thus O as there on shown at all angles of the boundaries of the land platted and at all ~~the~~ sections of streets and drives

Certificate of Municipal approval
This plat was approved by the Township of Blaine at a board meeting held this 19 day of June 1925
George Blass Township Clerk

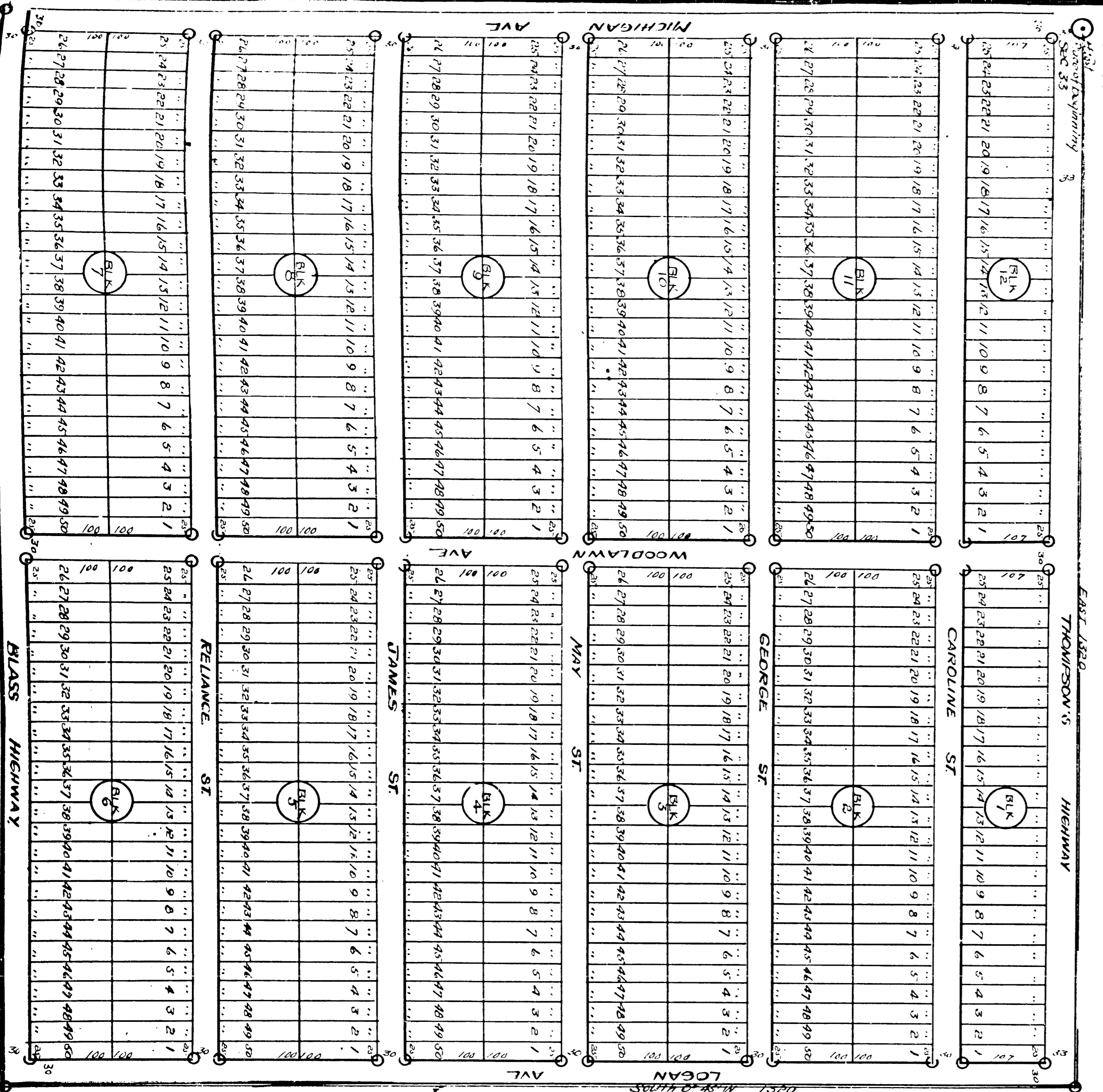
Certificate of approval by County Board
This plat was approved on the 16 day of June 1925

James T. West County Treasurer
John J. ... County Clerk

County Treasurers Certificate Relating to Taxes
Section 3350 CL 1915 office of county treasurer Lake Co. Michigan
I hereby certify that there are no tax liens or titles held by the State on the lands described above and that there are no tax liens or titles held by individuals on said land for the five years preceding the 16 day of June 1925, and that the taxes for said period of five years are paid as shown by the records of this office

James T. West County Treasurer

SHEET NO 1
NW 1/4 OF NE 1/4



George Blass
Notary Public

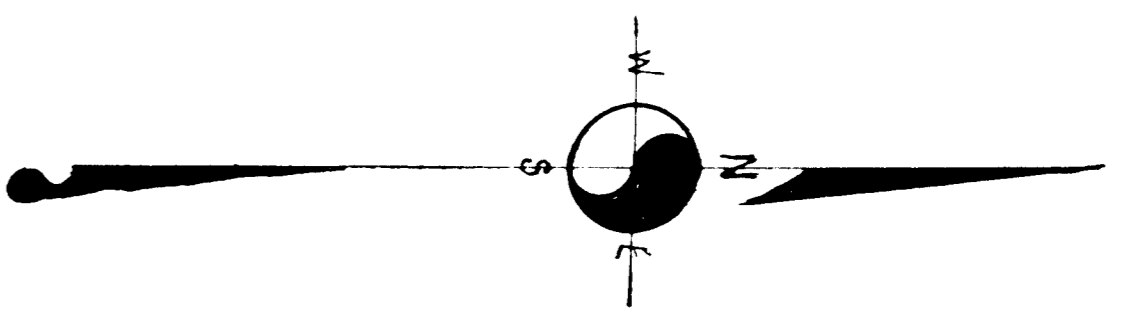
James T. West
County Treasurer

22109

BLASS PARK

Part of Section 35 Township 16N Range 12 W Lake County Michigan
Sheet 2 of 2 Sheets

SCALE
1" = 39' x 1/2" = 1800' x 1/4"
All dimensions in feet
and decimals thereof



SHEET NO 2
NE 1/4 OF NW 1/4

