

'BALDWIN AVE HOMESITES' PART OF THE N $\frac{1}{2}$ OF NE $\frac{1}{4}$ OF SEC. 17 T17N R13W PLEASANT PLAINS TWP LAKE COUNTY MICH.

Copy
Plat in 1 sheet.

DEDICATION

KNOW ALL MEN BY THESE PRESENTS, That we Charles Cardwell as proprietor and Marie David his wife, have caused the land embraced in the annexed plat to be surveyed, laid out and platted, to be known as Baldwin Ave Home-sites, and that the streets and alleys as shown on said plat are hereby dedicated to the use of the public.

Signed and Sealed in presence of Charles Cardwell (L.S.)
Marie David (L.S.)
Notary Public
M.F. Brown

STATE OF MICHIGAN Blair
County of Washtenaw

On this 8th day of August 1946 before me a Notary Public in and for said county, personally came the above named Charles Cardwell and Marie David and they declared to me to be the persons who executed the above dedication, and acknowledged the same to be their free act and deed.

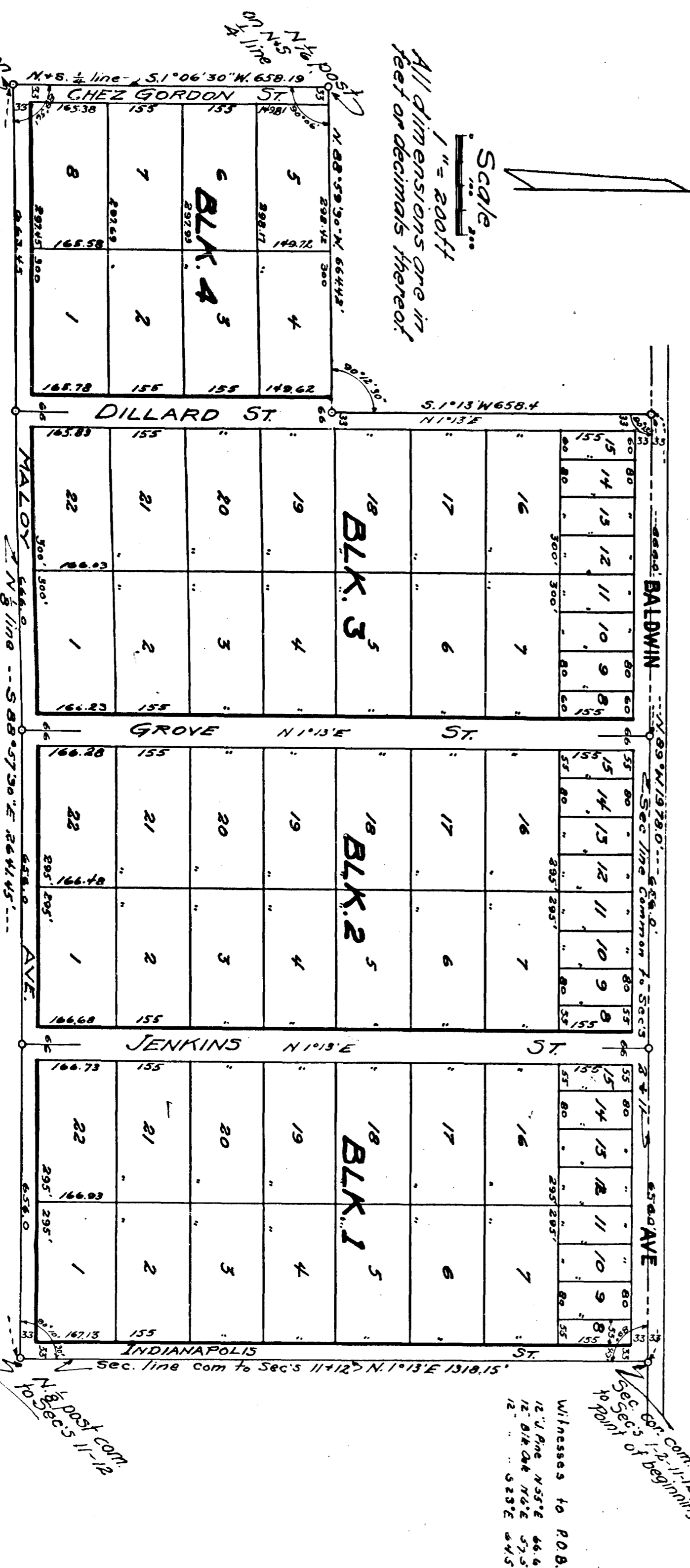
My Commission expires See 29th 1946

SURVEYOR'S CERTIFICATE

I hereby certify that the plat hereon delineated is a correct one and that permanent metal monuments consisting of bars not less than one-half inch in diameter, and 48 inches in length, or shorter bars of not less than one-half inch in diameter lapped over each other at least 6 inches with an over length of not less than 48 inches, enclosed in a concrete cylinder of least 4 inches in diameter and 48 inches in depth have been placed at all points marked thus (O) as thereon shown at all angles in the boundaries of the land platted, at all the intersections of streets, intersections of alleys, or of streets and alleys, and at the intersections of streets and alleys with the boundaries of the plat as shown on said plat.

DESCRIPTION OF LAND PLATTED

The land embraced in the annexed plat of Baldwin Ave. Home-sites, part of the N $\frac{1}{2}$ of NE $\frac{1}{4}$ of Sec. 17 T17N R13W, Pleasant Plains Twp, Lake County Mich. is described as follows: Beginning at the Sec. corner to Secs 1-2-11-12 T17N R13W. Thence: N89°W, 19.800' thence; S 1°13'W, 658.19' thence; N88°59'30"W, 664.42' thence; S 1°06'30"W, 658.19' thence; S 88°57'30"E, 244.15' thence N 1°13'E, 1318.15' to place of beginning.



CERTIFICATE of APPROVAL by BOARD of COUNTY ROAD COMMISSIONERS.

This plat has been examined and was approved on the 19th day of December 1946 by the Lake County Board of Road Commissioners.

Edward B. Deane Chairman
W. L. Lee Member
W. L. Lee Member

CERTIFICATE as to COUNTY ROADS

We hereby certify that said plat appears to include land located on a county road

Charles Cardwell
Notary Public

Examined and approved Dec. 20, 1946

Edward B. Deane
Chairman
W. L. Lee
Member

CERTIFICATE of MUNICIPAL APPROVAL

This plat was approved by the Township Board of the township of Pleasant Plains at a meeting held on the 19th day of September 1946

Harold V. Fisher
Mayor

This plat was approved on the 20th day of August 1946

Andrew Figure Judge of Probate
George W. Bradford County Treasurer

COUNTY TREASURER'S CERTIFICATE RELATING TO TAXES.

Office of County Treasurer Lake County
I hereby certify, That there are no tax liens or titles held by the State on individuals on said lands, for the five years preceding the 24th day of September 1946 and that the taxes for said period of five years are paid as shown by the records of this office.

This certificate does not apply to taxes, if any, now in process of collection by township, city or village collecting officers.

Scale
1" = 200ft
All dimensions are in feet or decimals thereof.

Part of Baldwin Ave.
Notary Public
M.F. Brown

FILED IN PLAT BOOK
January 23, 1947
Mayne Jennell Purdy
Notary Public

Examined and Approved
George W. Bradford
County Treasurer

Witnesses to P.O.B.
12.1.46
12.1.46
12.1.46