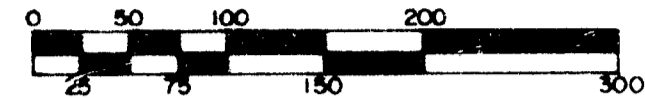


ARROWHEAD VILLAGE SUBDIVISION NO. 2

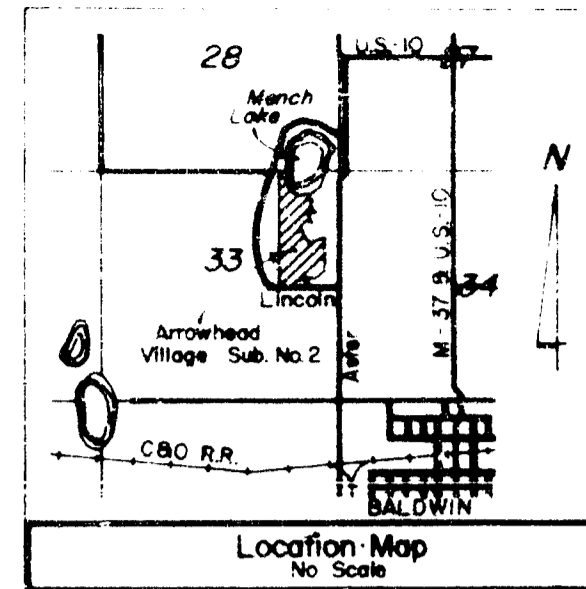
OF PART OF THE NE 1/4 OF SECTION 33,
T. 18 N., R. 13 W., WEBBER TOWNSHIP,
LAKE COUNTY, MICHIGAN

SCALE: 1" = 100'



SHEET 1 OF 3 SHEETS

JOHN KISTLER & ASSOCIATES, INC.
PROFESSIONAL ENGINEERS & SURVEYORS
GRAND HAVEN, MICHIGAN 49417



Curve Data					
Curve	Radius	Tangent	Central Angle	Chord Bearing	Chord Arc
A	390.05	65.36	19°01'55"	S 77°04'47" W	128.96 129.56
B	456.05	46.12	11°32'56"	S 80°49'42" W	91.77 91.92
C	143.72	90.66	64°36'14"	S 54°17'34" W	153.60 162.05
D	77.72	49.14	64°36'14"	S 54°17'34" W	83.06 87.63
E	60.00	39.51	28°15'58"	N 30°37'14" E	66.00 307.11
F	284.50	79.18	31°06'25"	N 06°26'14" E	152.57 154.46
G	218.50	60.82	31°06'25"	N 06°26'14" E	117.17 118.63
N	162.40	125.49	75°23'16"	S 25°46'30" W	198.60 213.68
O	266.05	34.18	14°36'28"	S 70°47'30" W	67.80 67.96

LEGEND

Dimensions are given in feet.
Waterfront lots extend to the waters edge.
Curvilinear dimensions are shown along the arc.
All lot corners are staked with steel angles 1" x 18" long.
Concrete monuments have been placed at all points marked thus "O".
Bearings are expressed in relation to bearings used for "ARROWHEAD VILLAGE" recorded in Liber 4, Page 36.

FREEBOARD LINE AS APPROVED BY WATER RESOURCES COMMISSION - ELEVATION 108.0 FEET ASSUMED DATUM

SURVEYOR'S CERTIFICATE

I, John J. Kistler, surveyor, certify that I have surveyed, divided and mapped the land shown on this plat, described as follows: Arrowhead Village Subdivision No. 2 of part of the Northeast 1/4 of Section 33, Town 18 North, Range 13 West, Webber Township, Lake County, Michigan beginning at a point on the East and West 1/4 line of Section 33 distant North 89 degrees 39 minutes 44 seconds West 473.52 feet from the East 1/4 corner of Section 33 and proceeding thence North 89 degrees 39 minutes 44 seconds West 849.59 feet; thence North 00 degrees 23 minutes 09 seconds East 2655.47 feet to the North line of Section 33; thence on an intermediate traverse line along the shores of Mench Lake South 33 degrees 52 minutes 42 seconds East 334.41 feet; thence South 77 degrees 10 minutes 07 seconds East 393.46 feet; thence North 76 degrees 16 minutes 08 seconds East 29.93 feet; thence leaving the traverse line South 13 degrees 02 minutes 00 seconds East 257.10 feet; thence South 21 degrees 16 minutes 30 seconds West 85.95 feet; thence South 44 degrees 14 minutes 00 seconds East 173.00 feet; thence South 78 degrees 44 minutes 00 seconds West 160.00 feet; thence South 41 degrees 31 minutes 41 seconds East 145.45 feet; thence on a curve to the left an arc distance of 67.98 feet; radius 266.05 feet; central angle 14 degrees 38 minutes 28 seconds and chord bears South 70 degrees 47 minutes 30 seconds West 67.80 feet; thence on a curve to the left an arc distance of 213.68 feet; radius 162.40 feet; central angle 75 degrees 23 minutes 16 seconds and chord bears South 25 degrees 46 minutes 30 seconds West 198.60 feet; thence South 11 degrees 55 minutes 00 seconds East 195.00 feet; thence on a curve to the right an arc distance of 116.99 feet; radius 843.62 feet; central angle 7 degrees 56 minutes 45 seconds and chord bears South 07 degrees 56 minutes 30 seconds East 116.90 feet; thence South 65 degrees 33 minutes 00 seconds East 74.25 feet; thence on a curve to the right an arc distance of 45.15 feet; radius 909.62 feet; central angle 2 degrees 50 minutes 38 seconds and chord bears South 00 degrees 19 minutes 00 seconds East 45.15 feet; thence South 01 degrees 06 minutes 00 seconds West 96.90 feet; thence South 01 degrees 10 minutes 00 seconds West 5.00 feet; thence North 67 degrees 33 minutes 00 seconds East 147.65 feet; thence South 32 degrees 48 minutes 00 seconds East 72.00 feet; thence North 66 degrees 29 minutes 30 seconds East 198.90 feet; thence North 80 degrees 21 minutes 00 seconds East 66.75 feet; thence North 63 degrees 47 minutes 00 seconds East 107.90 feet; thence South 01 degrees 51 minutes 00 seconds West 310.10 feet; thence South 02 degrees 48 minutes 00 seconds West 255.20 feet; thence South 00 degrees 33 minutes 30 seconds West 252.00 feet; thence South 45 degrees 33 minutes 30 seconds West 120.20 feet; thence South 69 degrees 58 minutes 00 seconds West 134.40 feet; thence North 80 degrees 07 minutes 00 seconds West 252.00 feet; thence South 28 degrees 44 minutes 00 seconds East 288.10 feet to the point of beginning, the last 25 courses being along the boundary of Arrowhead Village as recorded in L. 4 of plats on page 36. This plat contains 112 lots and encompasses 45.5 acres.

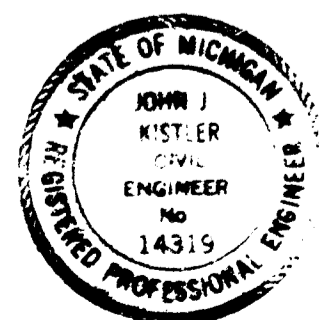
That I have made such survey, land-division and plat by the direction of the owners of such land.

That such plat is a correct representation of all the exterior boundaries of the land surveyed and the subdivision of it.

That the required monuments and lot markers have been located in the ground or that surety has been deposited with the municipality, as required by Section 125 of the Act.

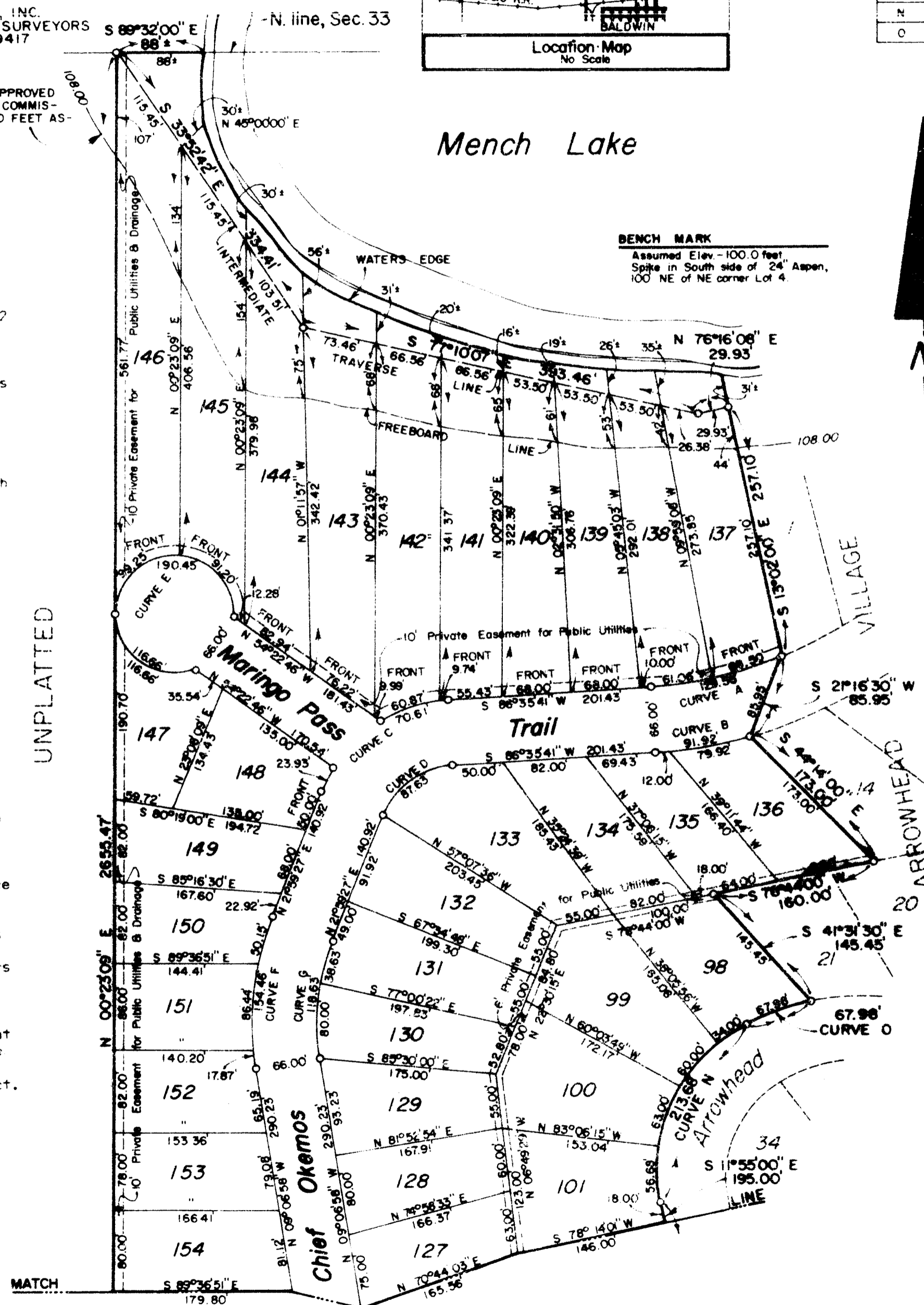
That the accuracy of survey is within the limits required by Section 126 of the Act. That the bearings shown on the plat are expressed as required by Section 126 (3) of the Act and as explained in the legend.

Date JUNE 9, 1972

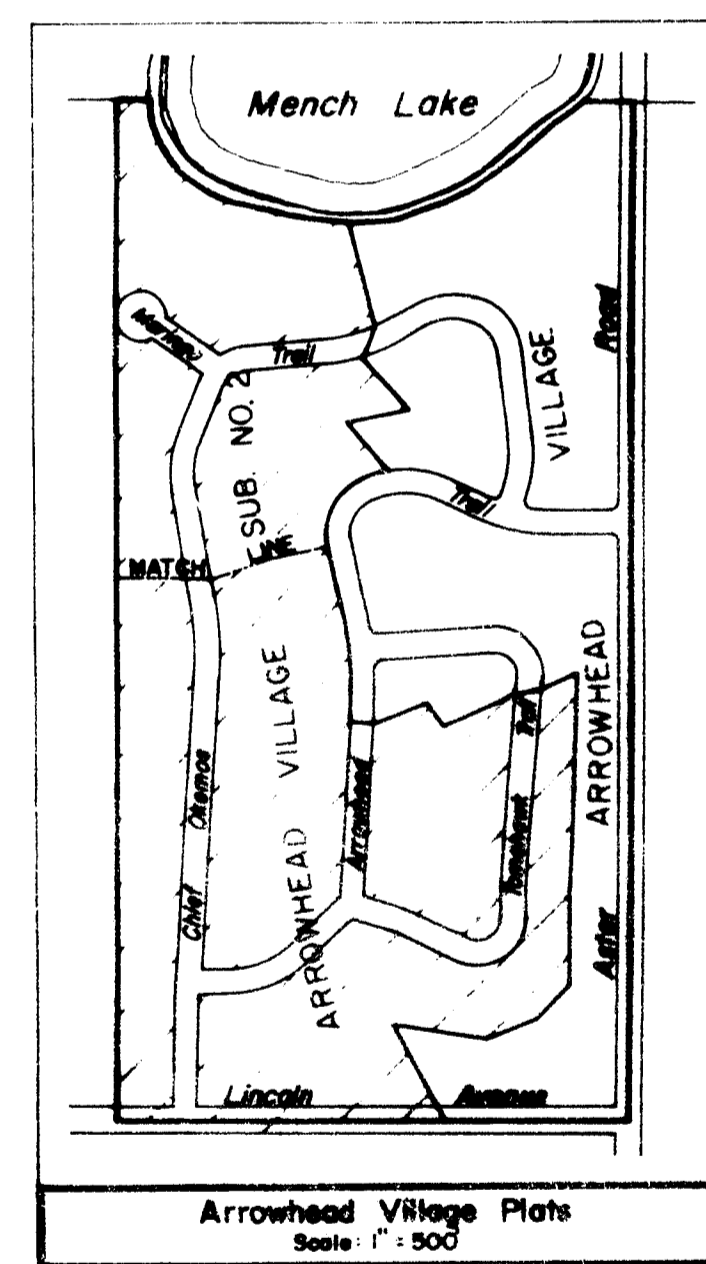


John Kistler & Associates, Inc.
302 South Bechtree Street
Grand Haven, Michigan 49417

John J. Kistler
John J. Kistler, President
Reg. No. 14319



BENCH MARK
Assumed Elev. - 100.0 feet.
Spike in South side of 24' Aspen,
100' NE of NE corner Lot 4.

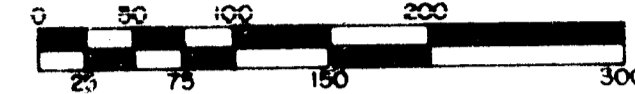


38186

ARROWHEAD VILLAGE SUBDIVISION NO. 2

OF PART OF THE NE 1/4 OF SECTION 33,
T. 18 N., R. 13 W., WEBBER TOWNSHIP,
LAKE COUNTY, MICHIGAN

SCALE: 1" = 100'

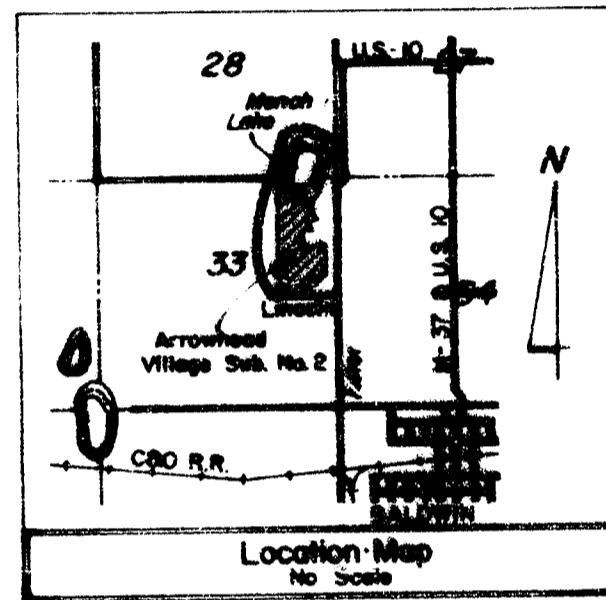


SHEET 2 OF 3 SHEETS

JOHN KISTLER & ASSOCIATES, INC.
PROFESSIONAL ENGINEERS & SURVEYORS
GRAND HAVEN, MICHIGAN 49417

LEGEND

Dimensions are given in feet.
Waterfront lots extend to the waters edge.
Curvilinear dimensions are shown along the arc.
All lot corners are staked with steel angles 1" x 1 1/2" long.
Concrete monuments have been placed at all points marked thus "O".
Bearings are expressed in relation to bearings used for "ARROWHEAD VILLAGE" recorded in Liber 4, Page 36.



Curve	Radius	Tangent	Central Angle	Chord Bearing	Chord	Arc
H	851.26'	96.27'	12°54'15"	N 02°39'50" W	191.32'	191.72'
I	917.26'	103.73'	12°54'15"	N 02°39'50" W	206.16'	206.59'
J	255.86'	87.25'	42°14'40"	N 68°19'22" E	162.78'	166.52'
K	291.86'	112.75'	42°14'40"	N 68°19'22" E	210.35'	215.19'
L	943.60'	37.35'	0°50'41.2"	N 01°25'22" W	74.63'	74.65'
M	908.62'	22.58'	0°50'38"	S 00°19'00" E	45.15'	45.15'
P	58.11'	95.67'	11°27'00"	N 57°17'17" E	99.34'	119.12'
Q	124.11'	204.33'	11°27'00"	N 57°17'17" E	212.15'	254.42'
R	1485.42'	94.26'	0°15'44"	N 02°11'39" E	188.15'	188.28'
S	1419.42'	90.06'	0°15'44"	N 02°11'39" E	179.79'	179.91'
T	843.62'	58.59'	0°15'44"	S 07°56'30" E	116.90'	116.99'

PROPRIETOR'S CERTIFICATE - CORPORATION

Northern Estates Inc. a corporation duly organized and existing under the laws of the State of Michigan by John W. Claire, President and Shirley J. Shoup, Secretary-Treasurer as proprietor, has caused the land to be surveyed, divided, mapped and dedicated as represented on this plat and that the streets are for the use of the public; that the public utility easements are private easements and that all other easements are for the uses shown on the plat; and Lots 137 through 146 inclusive extend to the waters edge of Mench Lake. Lots embracing any waters of Mench Lake are subject to the correlative rights of other riparian owners and to the public trust in these waters.

Witness:

Northern Estates Inc.
P.O. Box 186
Waltham, Michigan 49458

Charles C. Green
Charles C. Green

John W. Claire
John W. Claire, President

Theodore A. Tolmudge
Theodore A. Tolmudge

Shirley J. Shoup
Shirley J. Shoup, Secretary-Treasurer

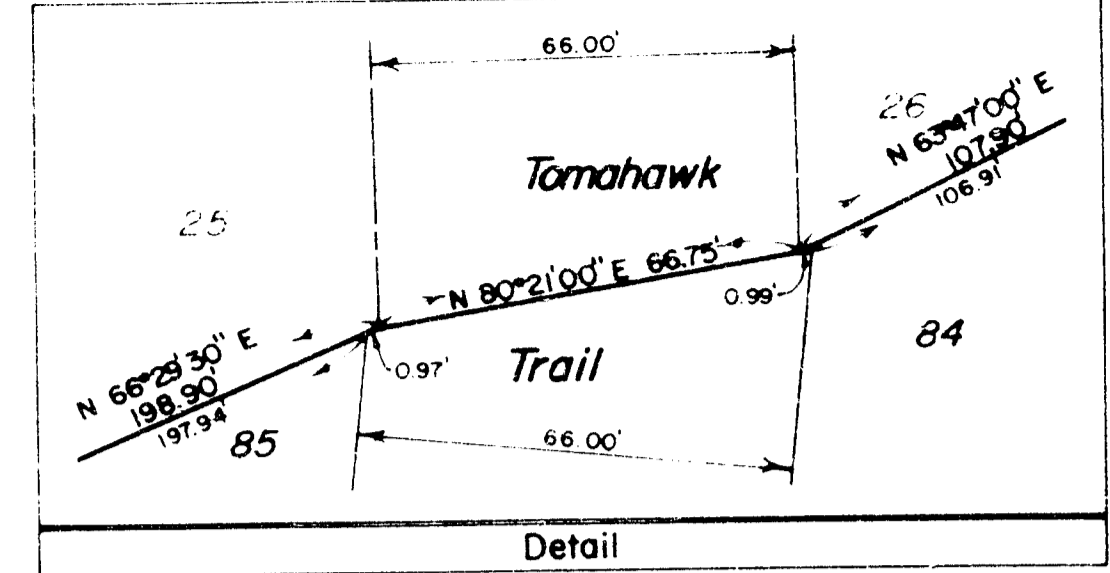
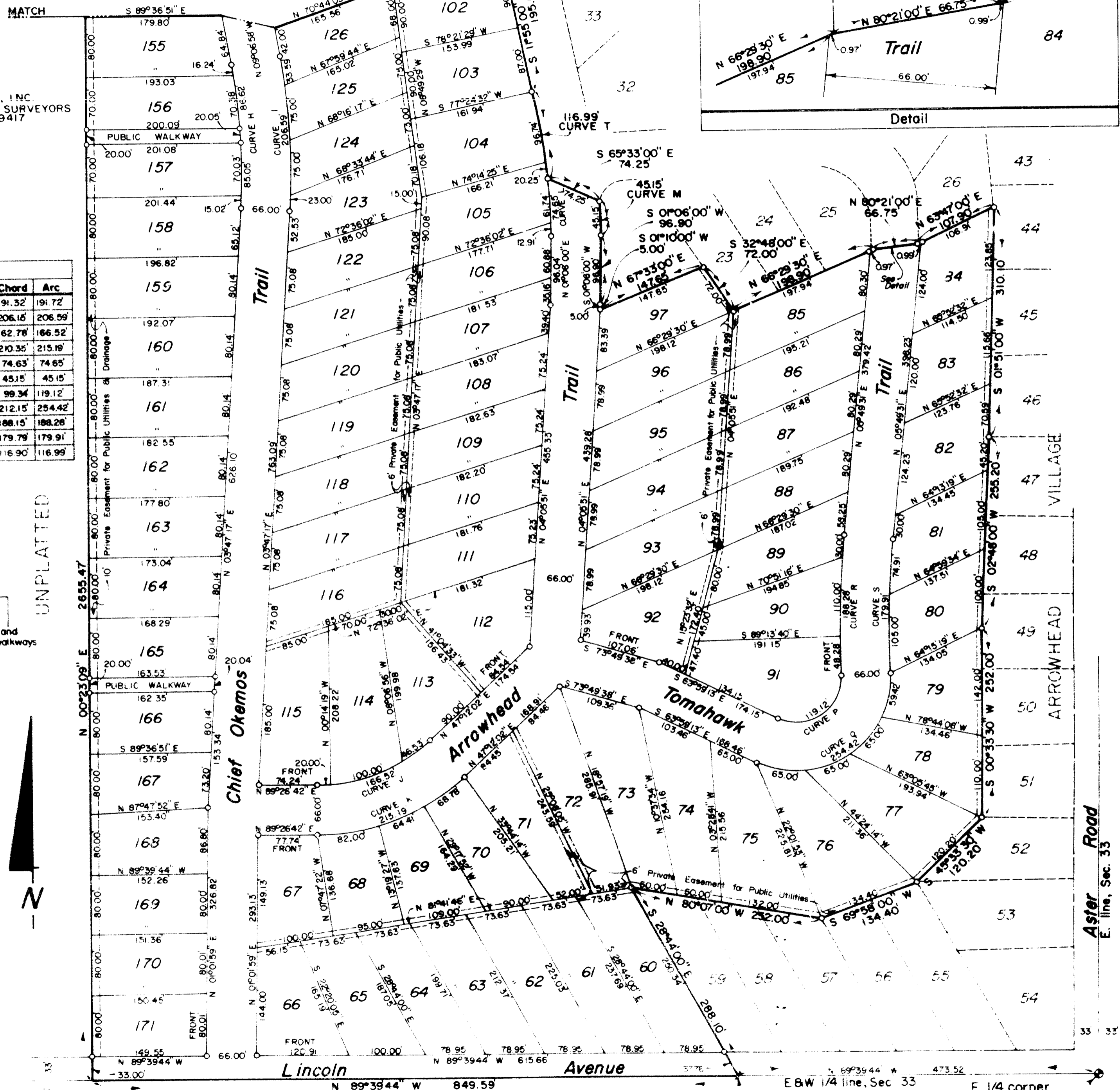
CORPORATION - ACKNOWLEDGEMENT

State of Michigan) ss
Lake County)

Personally came before me this 14th day of June, 1972, John W. Claire, President, and Shirley J. Shoup, Secretary-Treasurer, of the above named corporation, to me known to be the persons who executed the foregoing instrument, and to me known to be such President and Secretary-Treasurer of said corporation, and acknowledged that they executed the foregoing instrument as such officers as the free act and deed of said corporation, by its authority.

Henry E. Palma
Notary Public
MASON CO. ACTING IN Lake County, Michigan

Sept 25-1973



UNPLATTED

Aster Road
E. line, Sec. 33

E. 1/4 corner -
Section 33
T. 18 N., R. 13 W.
Webber Twp.
Lake County 53186

ARROWHEAD VILLAGE SUBDIVISION NO. 2

OF PART OF THE NE 1/4 OF SECTION 33,
T. 18 N., R. 13 W., WEBBER TOWNSHIP,
LAKE COUNTY, MICHIGAN

SHEET 3 OF 3 SHEETS

JOHN KISTLER & ASSOCIATES, INC.
PROFESSIONAL ENGINEERS & SURVEYORS
GRAND HAVEN, MICHIGAN 49417

COUNTY TREASURER'S CERTIFICATE

The records in my office show no unpaid taxes or special assessments for the five years preceding June 15 1972 involving the lands included in this plat.

Edwain Nelson
Edwain Nelson-Lake County Treasurer

CERTIFICATE OF COUNTY ROAD COMMISSIONERS

Approved on 15th June 1972 as complying with Section 183 of Act 288, P.A. 1967 and the applicable published rules and regulations of the Board of Road Commissioners of Lake County.

Nelson E. Wicks Nelson E. Wicks, Chairman
Alfred Kinney Alfred Kinney, Member

Albert Berzley
Albert Berzley, Member

CERTIFICATE OF MUNICIPAL APPROVAL

I certify that this plat was approved by the Township Board, of the Township of Webber at a meeting held June 22 1972 and was reviewed and found to be in compliance with Act 288, P.A. 1967, that the preliminary plat was approved by District Health Department No. 5 on March 11, 1970, and renewed on June 19 1972, and this plat conforms to Section 192 of Act 288, P.A. 1967.

Alice M. Avery Clerk
Alice M. Avery, Clerk

COUNTY PLAT BOARD CERTIFICATE

This plat has been reviewed and is approved by the Lake County Plat Board on June 23 1972 as being in compliance with all of the provisions of Act 288, P.A. 1967, and the Plat Board's applicable rules and regulations.

Tatt V. Utter Tatt V. Utter, Clerk-Register
Leo LaPointe Leo LaPointe, Chairman
Board of Commissioners

Edwain Nelson
Edwain Nelson, County Treasurer

RECORDING CERTIFICATE

State of Michigan) ss
Lake County)

This plat was received for record on the 15th day of August
A.D. 1972 at 9:00 a.m.

Recorded in Liber 4 of Plats on pages 47-48-49.

Tatt V. Utter
Tatt V. Utter, Clerk-Register
151

Certified true and correct
Sept. 15, 1972

Richard E. Roman
Sept. 15, 1972